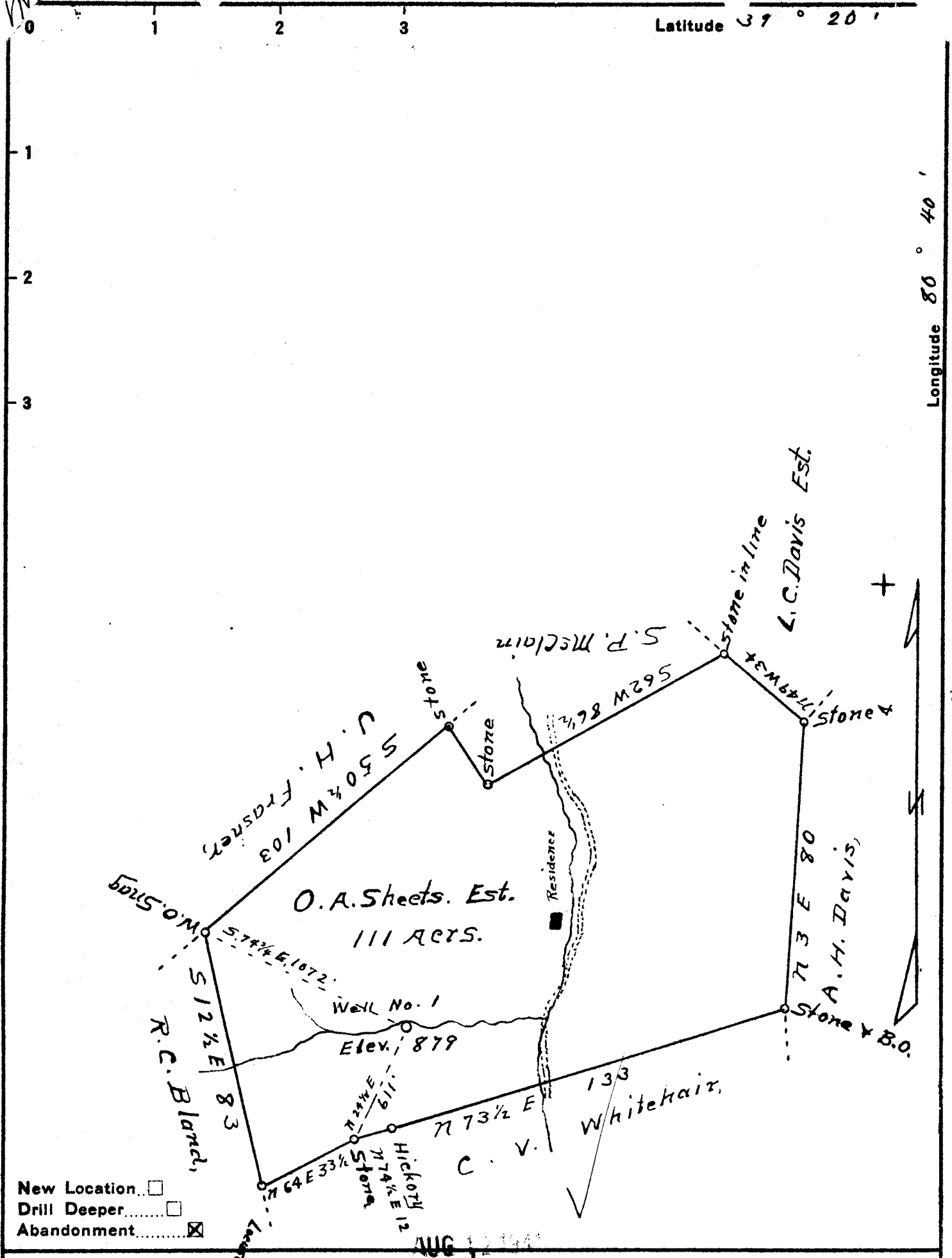


Latitude 37° 20'

Longitude 80° 40'



- New Location
- Drill Deeper
- Abandonment

AUG 12 1914

Company C. E. Gribble
 Address West Union, W. Va.
 Farm O. A. Sheets Est.
 Tract One Acres 111 Lease No. _____
 Well (Farm) No. 1 Serial No. _____
 Elevation (Spirit Level) 879
 Quadrangle Centerpoint
 County Doddridge District Grant
 Engineer J. M. Martin
 Engineer's Registration No. 84
 File No. _____ Drawing No. _____
 Date July 29 1914 Scale 40 P=1"

STATE OF WEST VIRGINIA
 DEPARTMENT OF MINES
 OIL AND GAS DIVISION
 CHARLESTON

WELL LOCATION MAP
 FILE NO. DOD-369A

+ Denotes location of well on United States Topographic Maps, scale 1 to 62,500, latitude and longitude lines being represented by border lines as shown.
 - Denotes one inch spaces on border line of original tracing.