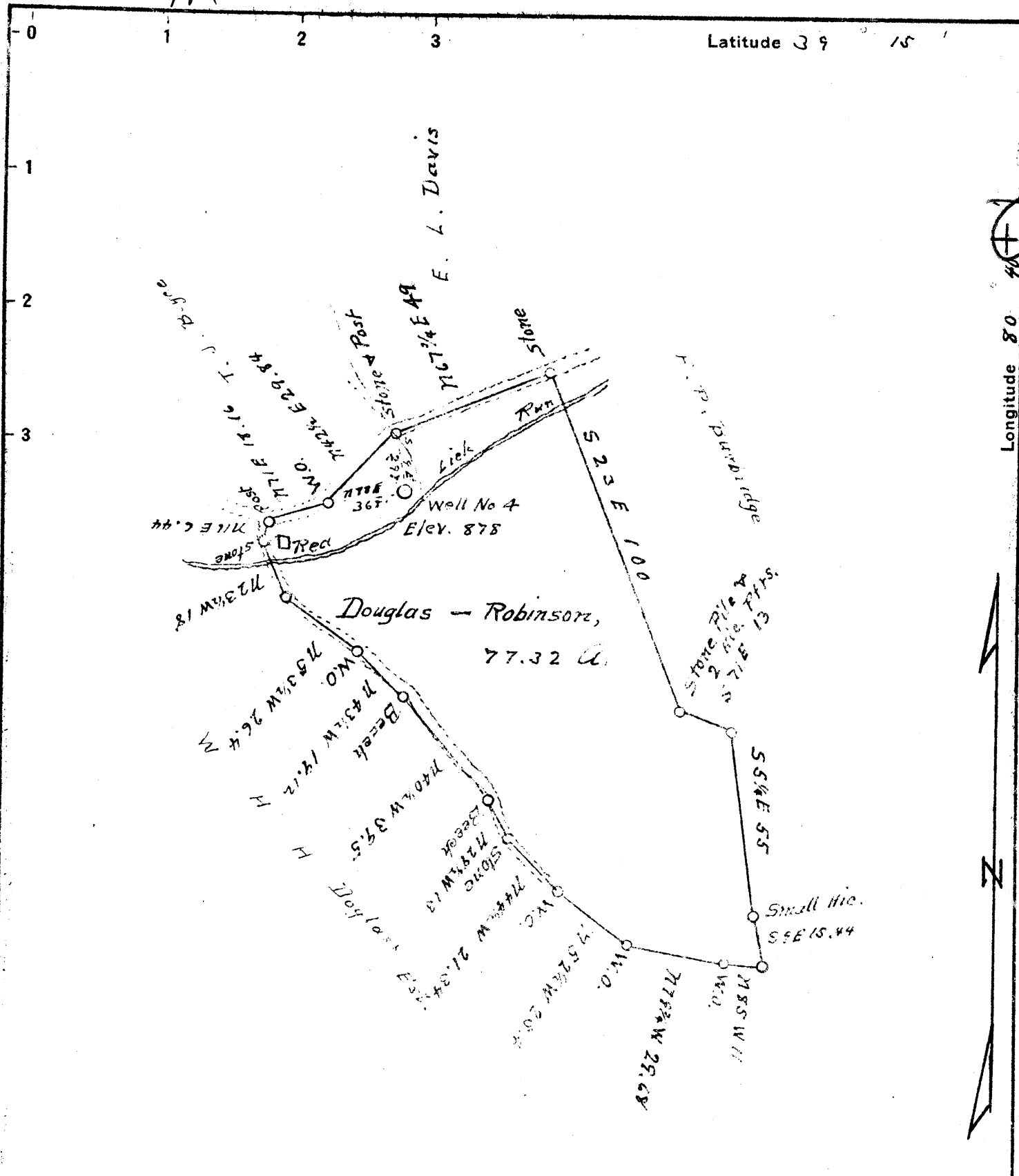


Latitude 39 15

Longitude 80 40



1.62 S
0.11 W

New Location
 Drill Deeper
 Abandonment ✓

Company Trainer & Travis
 Address West Union, W. Va.
 Farm Douglas - Robinson
 Tract One Acres 77.32 Lease No. _____
 Well (Farm) No. 4 Serial No. _____
 Elevation (Spirit Level) 878
 Quadrangle Vadis
 County Doddridge District New Milton
 Engineer J. M. Martin
 Engineer's Registration No. 84
 File No. _____ Drawing No. _____
 Date Oct 20 1942 Scale 40 P = 1"

STATE OF WEST VIRGINIA
 DEPARTMENT OF MINES
 OIL AND GAS DIVISION
 CHARLESTON

WELL LOCATION MAP
 FILE NO. DOD-424-A

+ Denotes location of well on United States Topographic Maps, scale 1 to 62,500, latitude and longitude lines being represented by border lines as shown.
 - Denotes one inch spaces on border line of original tracing.