

0.155  
3.92 W

FELIX DAVIS  
146 ±

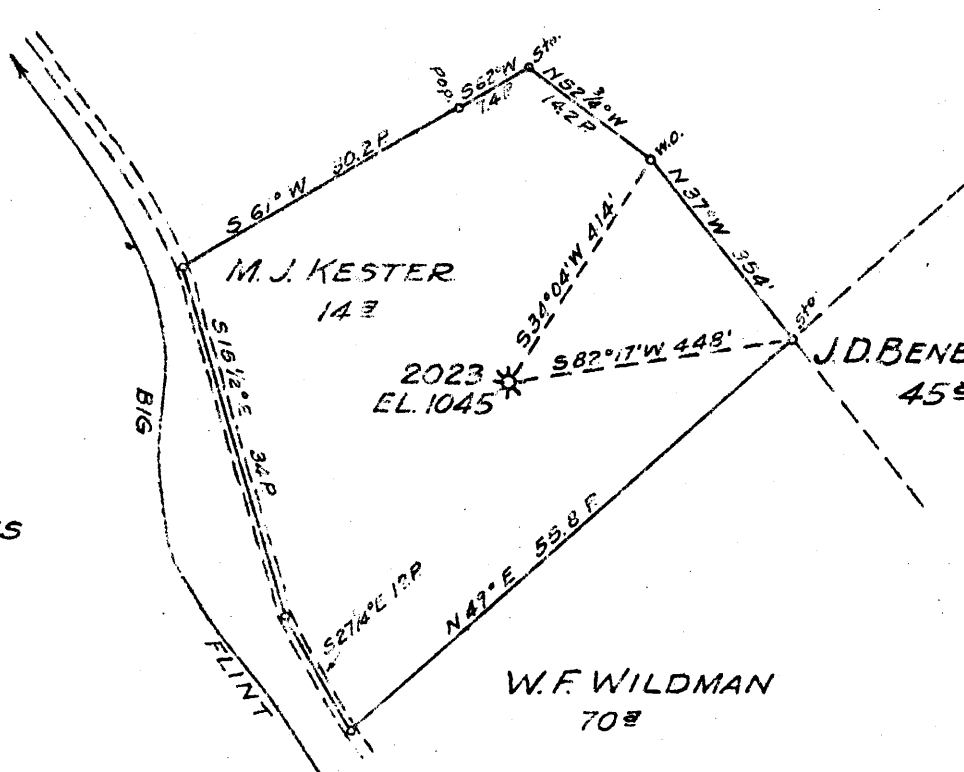
M. J. KESTER  
14 ±

MORIAH GASKINS  
72 ±

2023  
EL. 1045

J. D. BENEDUM  
45 ±

W. F. WILDMAN  
70 ±



- New Location
- Drill Deeper
- Abandonment

Map Sheet 54 Square S8W3 F.B. 551 P 6-7

Company HOPE NATURAL GAS CO.  
 Address CLARKSBURG, W. VA.  
 Farm M. J. KESTER  
 Tract \_\_\_\_\_ Acres 14 Lease No. 18091  
 Well (Farm) No. \_\_\_\_\_ Serial No. 2023  
 Elevation (Spirit Level) 1045  
 Quadrangle CENTERPOINT  
 County LODGE District GRANT  
 Engineer W. M. [Signature]  
 Engineer's Registration No. 900  
 File No. \_\_\_\_\_ Drawing No. \_\_\_\_\_  
 Date AUG. 14, 1945 Scale 1" = 300'

STATE OF WEST VIRGINIA  
 DEPARTMENT OF MINES  
 OIL AND GAS DIVISION  
 CHARLESTON

WELL LOCATION MAP  
 FILE NO. DOD-495-A

\* Denotes location of well on United States Topographic Maps, scale 1 to 22,500, latitude and longitude lines being represented by border lines as shown.

- Denotes one inch spaces on border line of original tracing

72801 on CNG map



STATE OF WEST VIRGINIA  
DEPARTMENT OF MINES  
OIL AND GAS DIVISION

400

Permit No. 495-A

WELL RECORD

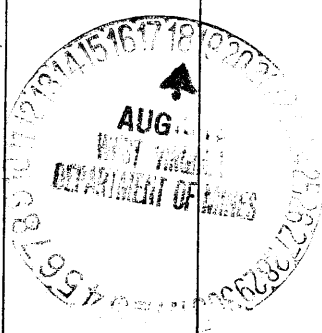
~~Oil~~ or Gas Well (KIND)

Company Hope Natural Gas Company.  
Address 445 West Main St. Clarksburg, W. Va.  
Farm M.J. Kester Acres 14  
Location (waters) \_\_\_\_\_  
Well No. 2023 Elev. 1045  
District Grant County Doddridge  
The surface of tract is owned in fee by \_\_\_\_\_  
Address \_\_\_\_\_  
Mineral rights are owned by \_\_\_\_\_  
Address \_\_\_\_\_  
Drilling commenced November 23, 1910  
Drilling completed December 24, 1910  
Date Shot \_\_\_\_\_ From \_\_\_\_\_ To \_\_\_\_\_  
With \_\_\_\_\_  
Open Flow \_\_\_\_\_ /10ths Water in \_\_\_\_\_ Inch  
\_\_\_\_\_ /10ths Merc. in \_\_\_\_\_ Inch  
Volume \_\_\_\_\_ Cu. Ft.  
Rock Pressure \_\_\_\_\_ lbs. \_\_\_\_\_ hrs.  
Oil \_\_\_\_\_ bbls., 1st 24 hrs.  
Fresh water \_\_\_\_\_ feet \_\_\_\_\_ feet  
Salt water 1530 feet \_\_\_\_\_ feet

Casing and Tubing	Used in Drilling	Left in Well	Packers
Size			
16			Kind of Packer
13			
10	290	290	Size of
8 1/4	1100	1100	
6 3/8	1929	1928	Depth set
5 3/16			
3			Perf. top
2	1994	1994	Perf. bottom
Liners Used			Perf. top
			Perf. bottom

**Not cemented**  
CASING CEMENTED \_\_\_\_\_ SIZE \_\_\_\_\_ No. Ft. \_\_\_\_\_ Date \_\_\_\_\_  
COAL WAS ENCOUNTERED AT 93 FEET 24 INCHES  
595 FEET 108 INCHES FEET INCHES  
FEET INCHES FEET INCHES

Formation	Color	Hard or Soft	Top	Bottom	Oil, Gas or Water	Depth Found	Remarks
Native coal			93	95			
Pittsburgh Coal			595	604			
Little Dunkard			1030	1058			
Big Dunkard			1094	1110			
Gas sand			1255	1305			
First Salt			1353	1415			
Second Salt			1526	1644	water	1530	
Maxon			1680	1740	show gas	1724	
Little Lime			1858	1872			
Pencil cave			1872	1887			
Big Lime			1887	1939			
Big Injun			1939		gas	1960-1970-1980	
Total depth				1994			



(Over)

NOV - 6 1945