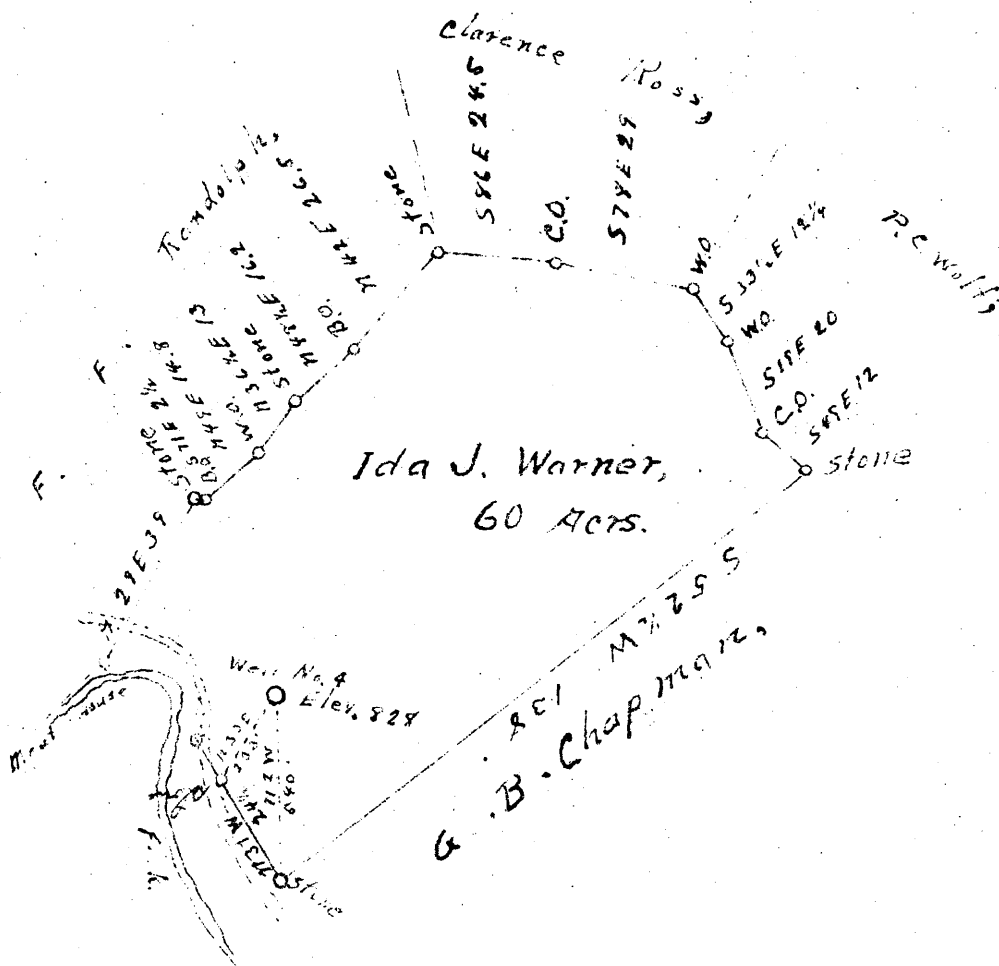


+ 1,12 S  
1,06 W

Longitude 80 40



New Location  
 Drill Deeper  
 Abandonment **X**

STATE OF WEST VIRGINIA  
 DEPARTMENT OF MINES  
 OIL AND GAS DIVISION  
 CHARLESTON

**WELL LOCATION MAP**  
 FILE NO. DOD-554-A

+ Denotes location of well on United States Topographic Maps, scale 1 to 62,500. Latitude and longitude lines being represented by border lines as shown.

- Denotes one inch spaces on border line of original tracing

Company P. & M. Oil Co.  
 Address West Union, W. Va.  
 Farm Ida J. Warner,  
 Tract \_\_\_\_\_ Acres 60 Lease No. \_\_\_\_\_  
 Well (Farm) No. 4 Serial No. \_\_\_\_\_  
 Elevation (Spirit Level) 828  
 Quadrangle Vadis  
 County Doddrige District New Milton  
 Engineer J. M. Martin  
 Engineer's Registration No. 84  
 File No. \_\_\_\_\_ Drawing No. \_\_\_\_\_  
 Date Jan. 30 1947 Scale 40 F = 1"



458

STATE OF WEST VIRGINIA  
DEPARTMENT OF MINES  
OIL AND GAS DIVISION

WELL RECORD

Permit No. 504 A

Oil or Gas Well OIL

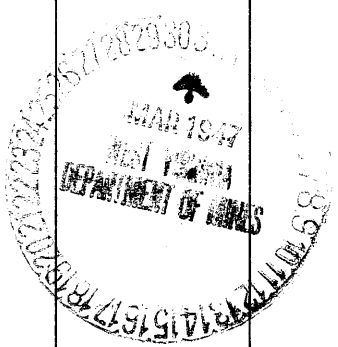
(KIND)

Company P. & M. Oil Company  
 Address West Union, W. Va.  
 Farm Ida Warner Acres 60  
 Location (waters) Meat House Fork  
 Well No. 4 Elev. 828  
 District New Milton County Doddridge  
 The surface of tract is owned in fee by Stacy McLain  
 Address New Milton  
 Mineral rights are owned by Ida Warner Heirs  
 Address \_\_\_\_\_  
 Drilling commenced December 1 1920  
 Drilling completed January 1921  
 Date Shot From \_\_\_\_\_ To \_\_\_\_\_  
 With \_\_\_\_\_  
 Open Flow /10ths Water in \_\_\_\_\_ Inch  
 /10ths Merc. in \_\_\_\_\_ Inch  
 Volume \_\_\_\_\_ Cu. Ft.  
 Rock Pressure \_\_\_\_\_ lbs. \_\_\_\_\_ hrs.  
 Oil \_\_\_\_\_ bbls., 1st 24 hrs.  
 Fresh water \_\_\_\_\_ feet \_\_\_\_\_ feet  
 Salt water \_\_\_\_\_ feet \_\_\_\_\_ feet

Casing and Tubing	Used in Drilling	Left in Well	Packers
Size			Kind of Packer
16			
13	13		
10	295		Size of
8 1/4	1016		
6 5/8			Depth set
5 3/16	1805		
3			Perf. top
2			Perf. bottom
Liners Used			Perf. top
			Perf. bottom

CASING CEMENTED \_\_\_\_\_ SIZE \_\_\_\_\_ No. Ft. \_\_\_\_\_ Date \_\_\_\_\_  
 COAL WAS ENCOUNTERED AT \_\_\_\_\_ FEET \_\_\_\_\_ INCHES  
 \_\_\_\_\_ FEET \_\_\_\_\_ INCHES \_\_\_\_\_ FEET \_\_\_\_\_ INCHES  
 \_\_\_\_\_ FEET \_\_\_\_\_ INCHES \_\_\_\_\_ FEET \_\_\_\_\_ INCHES

Formation	Color	Hard or Soft	Top	Bottom	Oil, Gas or Water	Depth Found	Remarks
Pittsburgh Coal			470	472			
Little Dunkard			845	875			
Big Dunkard			1016	1085			
First Salt Sand			1230	1292			
Second Salt Sand			1304	1400			
Third Salt Sand			1440	1500			
Sand			1580	1600			
Slate & Shells			1600	1745			
Pink Rock			1760	1765			
Little Lime			1765	1792			
Pencil Cave			1792	1796			
Blue Monday			1796	1855			
Big Lime			1855	1883			
Injun			1883	1951			
Oil & Gas			1905	1927			
Total Depth				1951			



©