

Latitude 39° 22' 30"

39° 22' 30"

Longitude

75'
+

Topo Location

7.5' Loc. 2.12S 15' Loc. 5.00S
1.91W (calc.) 4.14W

Company _____ # 414

Farm A. Stark Hrs.

15' Quad Centropnt EC
(sec.)

7.5' Quad Salem

District McClellan

WELL LOCATION PLAT

County 017 Permit 30562

AFFIDAVIT OF PLUGGING AND FILLING WELL

AFFIDAVIT SHOULD BE MADE IN TRIPLICATE AND ONE COPY OF THE AFFIDAVIT AND ONE COPY OF THE REPORT AND ONE COPY OF THE RECORD SHOULD BE FILED IN THE OFFICE OF THE STATE SUPERVISOR OF MINES AND ONE COPY OF THE AFFIDAVIT AND ONE COPY OF THE REPORT AND ONE COPY OF THE RECORD SHOULD BE FILED IN THE OFFICE OF THE STATE SUPERVISOR OF MINES AND ONE COPY OF THE AFFIDAVIT AND ONE COPY OF THE REPORT AND ONE COPY OF THE RECORD SHOULD BE FILED IN THE OFFICE OF THE STATE SUPERVISOR OF MINES.

On this 10th day of August 1917, I, James H. Thomas, State Supervisor of Mines, do hereby certify that the above is a true and correct copy of the original as filed in my office.

WELL AND LOCATION
 Well No. 414
 District 194
 County Bedford
 Farm LD Star

STATE SUPERVISOR SUPERVISING PLUGGING

AFFIDAVIT

STATE OF WEST VIRGINIA
 County of Bedford

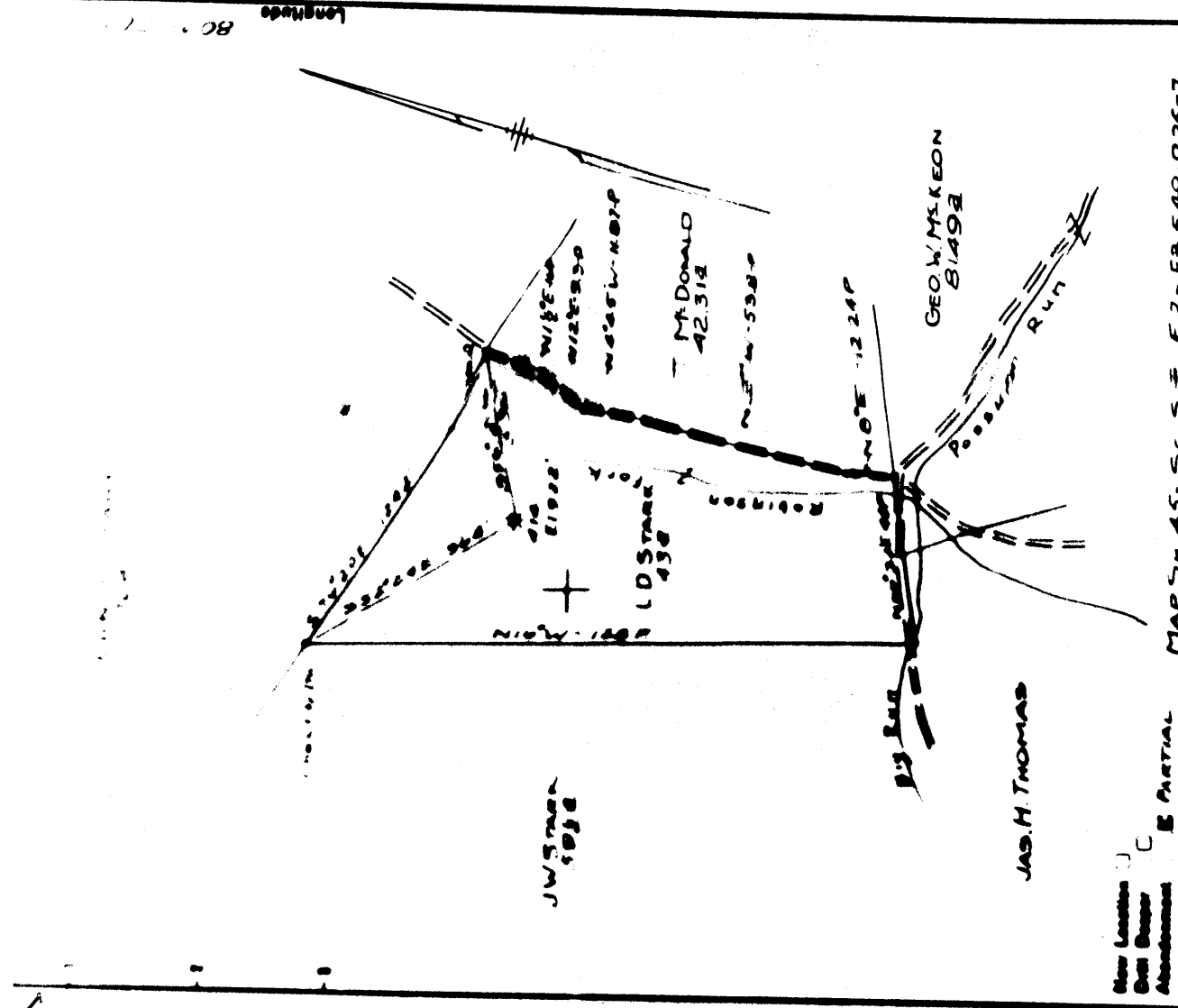
I, James H. Thomas, State Supervisor of Mines, do hereby certify that the above is a true and correct copy of the original as filed in my office.

being first duly sworn according to law before me and say that they are experienced in the work of plugging and filling oil and gas wells and were employed by John McKeeon and Thomas well operator, and participated in the work of plugging and filling the above well, that said work was commenced on the 9th day of July, 1917, and that the well was plugged and filled in the following manner:

DEPTH	PLUGGING MATERIAL	PLUGGING METHOD	DEPTH	PLUGGING MATERIAL	PLUGGING METHOD
0 to 10	Gravel	Down	10 to 20	Gravel	Down
20 to 30	Gravel	Down	30 to 40	Gravel	Down
40 to 50	Gravel	Down	50 to 60	Gravel	Down
60 to 70	Gravel	Down	70 to 80	Gravel	Down
80 to 90	Gravel	Down	90 to 100	Gravel	Down
100 to 110	Gravel	Down	110 to 120	Gravel	Down
120 to 130	Gravel	Down	130 to 140	Gravel	Down
140 to 150	Gravel	Down	150 to 160	Gravel	Down
160 to 170	Gravel	Down	170 to 180	Gravel	Down
180 to 190	Gravel	Down	190 to 200	Gravel	Down
200 to 210	Gravel	Down	210 to 220	Gravel	Down
220 to 230	Gravel	Down	230 to 240	Gravel	Down
240 to 250	Gravel	Down	250 to 260	Gravel	Down
260 to 270	Gravel	Down	270 to 280	Gravel	Down
280 to 290	Gravel	Down	290 to 300	Gravel	Down
300 to 310	Gravel	Down	310 to 320	Gravel	Down
320 to 330	Gravel	Down	330 to 340	Gravel	Down
340 to 350	Gravel	Down	350 to 360	Gravel	Down
360 to 370	Gravel	Down	370 to 380	Gravel	Down
380 to 390	Gravel	Down	390 to 400	Gravel	Down
400 to 410	Gravel	Down	410 to 420	Gravel	Down
420 to 430	Gravel	Down	430 to 440	Gravel	Down
440 to 450	Gravel	Down	450 to 460	Gravel	Down
460 to 470	Gravel	Down	470 to 480	Gravel	Down
480 to 490	Gravel	Down	490 to 500	Gravel	Down
500 to 510	Gravel	Down	510 to 520	Gravel	Down
520 to 530	Gravel	Down	530 to 540	Gravel	Down
540 to 550	Gravel	Down	550 to 560	Gravel	Down
560 to 570	Gravel	Down	570 to 580	Gravel	Down
580 to 590	Gravel	Down	590 to 600	Gravel	Down
600 to 610	Gravel	Down	610 to 620	Gravel	Down
620 to 630	Gravel	Down	630 to 640	Gravel	Down
640 to 650	Gravel	Down	650 to 660	Gravel	Down
660 to 670	Gravel	Down	670 to 680	Gravel	Down
680 to 690	Gravel	Down	690 to 700	Gravel	Down
700 to 710	Gravel	Down	710 to 720	Gravel	Down
720 to 730	Gravel	Down	730 to 740	Gravel	Down
740 to 750	Gravel	Down	750 to 760	Gravel	Down
760 to 770	Gravel	Down	770 to 780	Gravel	Down
780 to 790	Gravel	Down	790 to 800	Gravel	Down
800 to 810	Gravel	Down	810 to 820	Gravel	Down
820 to 830	Gravel	Down	830 to 840	Gravel	Down
840 to 850	Gravel	Down	850 to 860	Gravel	Down
860 to 870	Gravel	Down	870 to 880	Gravel	Down
880 to 890	Gravel	Down	890 to 900	Gravel	Down
900 to 910	Gravel	Down	910 to 920	Gravel	Down
920 to 930	Gravel	Down	930 to 940	Gravel	Down
940 to 950	Gravel	Down	950 to 960	Gravel	Down
960 to 970	Gravel	Down	970 to 980	Gravel	Down
980 to 990	Gravel	Down	990 to 1000	Gravel	Down

and that the work of plugging and filling said well was completed on the 15 day of July, 1917.

And further deponents with me



Company HOPE NATURAL GAS CO
 Address CLARSBURG, W. VA
 Farm LD STAR
 Tract Area 13 Lease No. 3937
 Well (Farm) No. 414 Bond No. 414
 Elevation (Bench Level) 922
 Ownership CENTER POINT

STATE OF WEST VIRGINIA
 DEPARTMENT OF MINES
 OIL AND GAS DIVISION
 CHARLESTON

WELL LOCATION MAP
 FILE NO. Dod-562-A