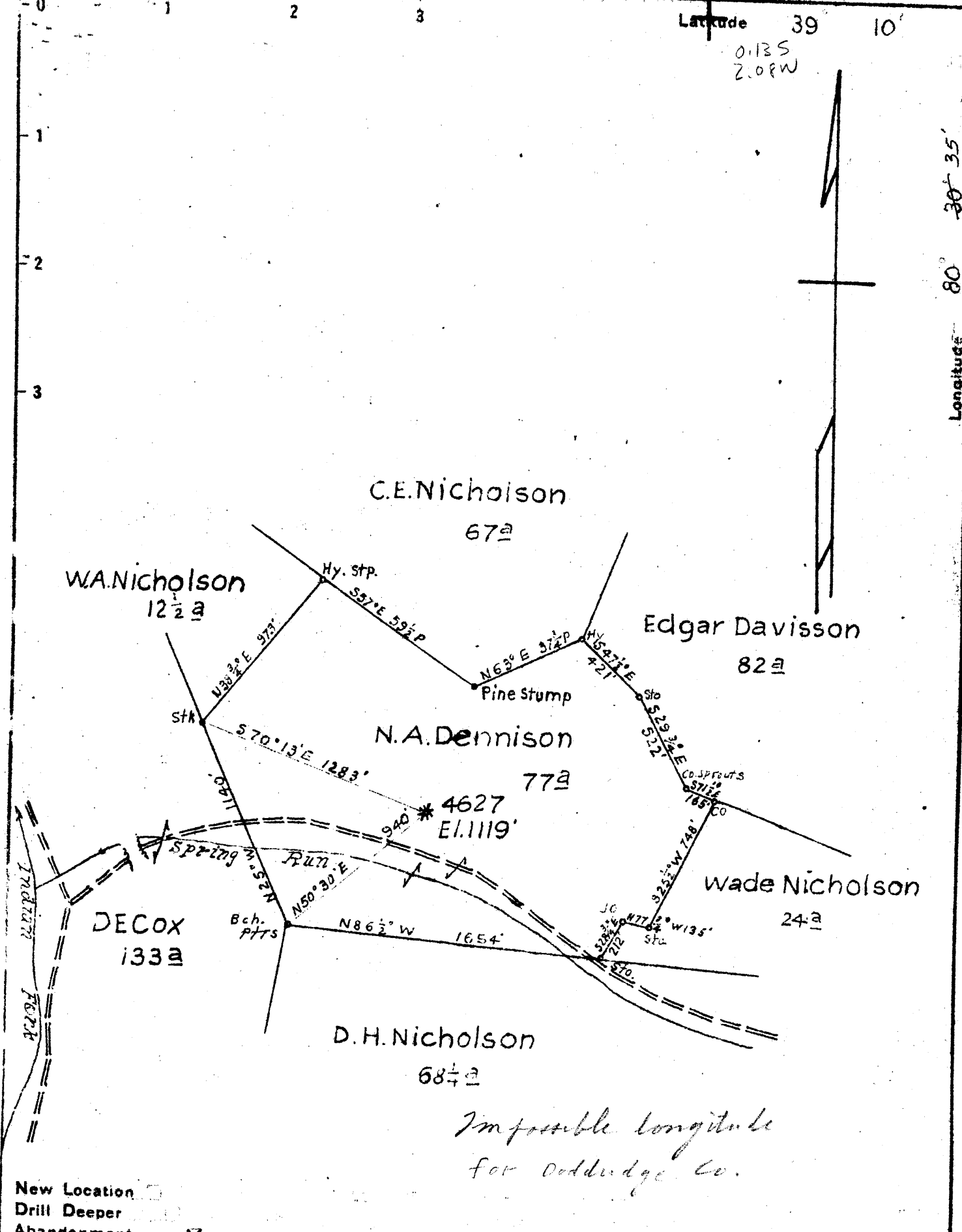


Latitude 39 10'

0.135
2.08W

Longitude 80 35'



Impossible longitude
for Doddridge Co.

- New Location
- Drill Deeper
- Abandonment

Mapsh. 58 S20 W2 FB 567P 22-23.

| | | | |
|-----------------------------|----------------------|-----------|------------|
| Company | Hope Natural Gas Co. | | |
| Address | Clarksburg, W.Va. | | |
| Farm | N.A. Dennison | | |
| Tract | Acres | Lease No. | |
| Well (Farm) No. | Serial No. | 4627 | |
| Elevation (Spirit Level) | 1119 | | |
| Quadrangle | Vadis | | |
| County | Doddridge | District | New Milton |
| Engineer | W.M. Bowen | | |
| Engineer's Registration No. | 900 | | |
| File No. | Drawing No. | | |
| Date | 10-13-47 | Scale | 1" = 40 P |

STATE OF WEST VIRGINIA
DEPARTMENT OF MINES
OIL AND GAS DIVISION
CHARLESTON

WELL LOCATION MAP
FILE NO. 100d-578-A

+ Denotes location of well on United States Topographic Maps, scale 1 to 62,500, latitude and longitude lines being represented by border lines as shown.
- Denotes one inch spaces on border line of original tracing.



474

STATE OF WEST VIRGINIA
DEPARTMENT OF MINES
OIL AND GAS DIVISION

WELL RECORD

Permit No. 578A

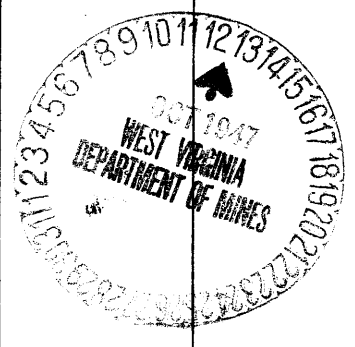
Oil or Gas Well (KIND)

Company Hope Natural Gas Company.
 Address 445 West Main St. Clarksburg, W.Va.
 Farm N.A. Dennison Acres 24
 Location (waters) _____
 Well No. 462 Elev. 1119
 District New Milton County Doddridge
 The surface of tract is owned in fee by _____
 Address _____
 Mineral rights are owned by _____
 Address _____
 Drilling commenced purchased well
 Drilling completed _____
 Date Shot _____ From _____ To _____
 With _____
 Open Flow _____ /10ths Water in _____ Inch
 _____ /10ths Merc. in _____ Inch
 Volume _____ Cu. Ft.
 Rock Pressure _____ lbs. _____ hrs.
 Oil _____ bbls., 1st 24 hrs.
 Fresh water none recorded feet _____ feet
 Salt water do do feet _____ feet

| Casing and Tubing | Used in Drilling | Left in Well | Packers |
|-------------------|------------------|--------------|----------------|
| Size | | | Kind of Packer |
| 16 | | | |
| 13 | | | |
| 10 | | | Size of |
| 8 1/4 | 1241 | 391 | |
| 6 5/8 | 1544 | 1544 | Depth set |
| 5 3/16 | 2082 | 2082 | |
| 3 | | | Perf. top |
| 2 | | | Perf. bottom |
| Liners Used | | | Perf. top |
| | | | Perf. bottom |

CASING CEMENTED NOT SIZE _____ No. Ft. _____ Date _____
 COAL WAS ENCOUNTERED AT 110 FEET 24 INCHES
675 FEET 60 INCHES FEET INCHES
 FEET INCHES FEET INCHES

| Formation | Color | Hard or Soft | Top | Bottom | Oil, Gas or Water | Depth Found | Remarks |
|-----------------------|-------|--------------|------|--------|-------------------|-------------|---------|
| Native coal | | | 110 | 112 | | | |
| Pittsburgh Coal | | | 675 | 680 | | | |
| Little Dunkard | | | 1095 | 1165 | | | |
| Big Dunkard | | | 1220 | 1238 | | | |
| Gas sand | | | 1475 | 1548 | | | |
| First Salt | | | 1593 | 1668 | | | |
| Second Salt | | | 1697 | 1787 | | | |
| Maxon | | | 2004 | 2088 | | | |
| Little Lime | | | 2039 | 2055 | | | |
| Pencil cave | | | 2055 | 2085 | | | |
| Big Lime | | | 2085 | 2150 | | | |
| Big Injun | | | 2150 | 2230 | | | |
| Swuaw | | | 2260 | 2353 | | | |
| Gantz | | | 2467 | 2480 | gas | 2467 | |
| Sand | | | 2492 | 2498 | oil | 2494 2496 | |
| Fifty foot | | | | | | | |
| Thirty foot | | | 2675 | 2691 | | | |
| Gordon stray | | | 2755 | 2768 | | | |
| Gordon | | | 2786 | 2795 | gas | 2790 | |
| Total depth | | | | 2817 | | | |



| Formation | Color | Hard or Soft | Top | Bottom | Oil, Gas or Water | Depth Found | Remarks |
|-----------|-------|--------------|-----|--------|-------------------|-------------|---------|
| | | | | | | | |

Date **October 9, 1947.**, 19

APPROVED **Hope Natural Gas Company.**, Owner

By _____

(Title)

