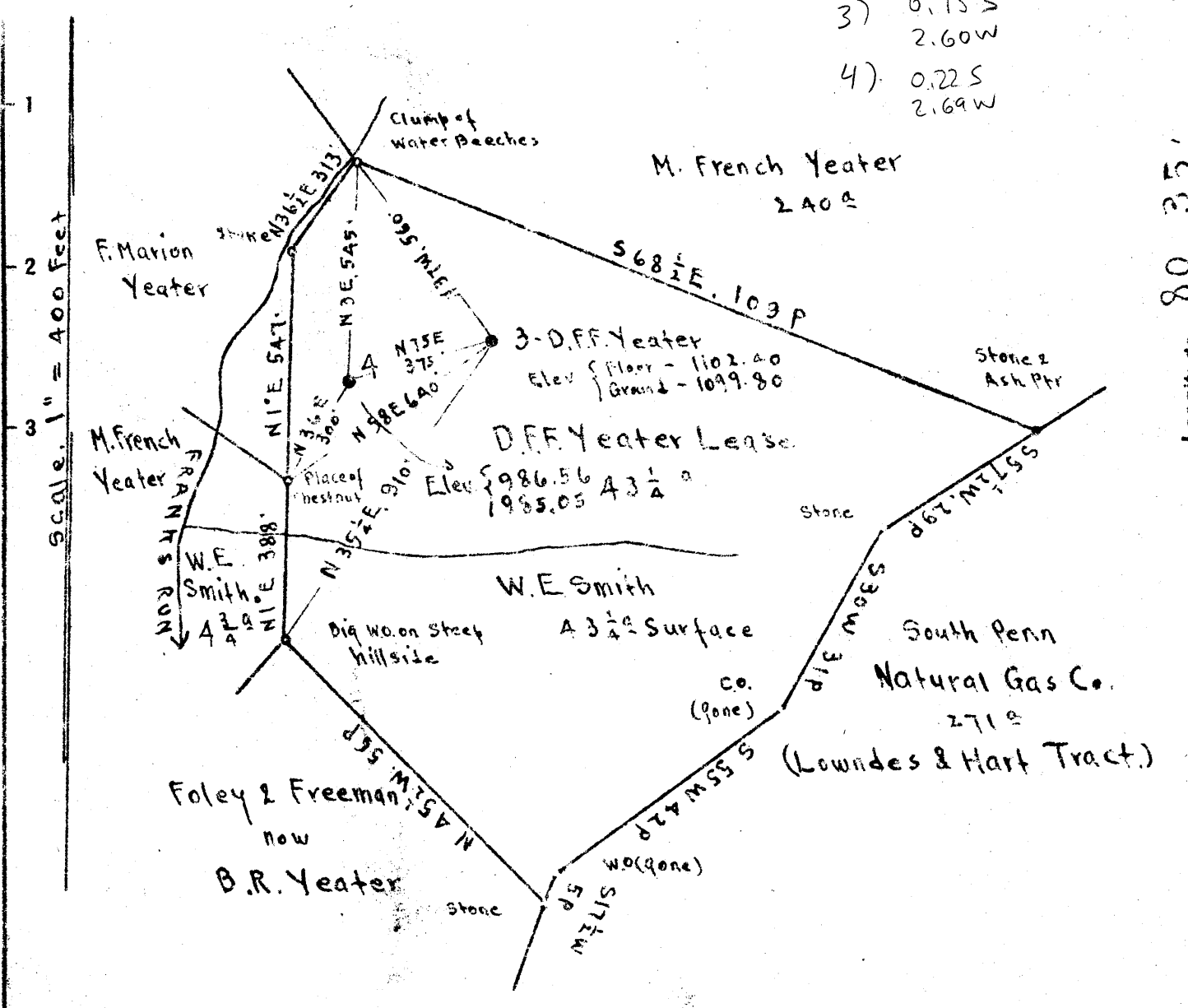


Latitude 39 25'

- 3) 0.15 S  
2.60 W
- 4) 0.22 S  
2.69 W



- Surface: Walter E. Smith; Star Route, Smith field, Wetzel Co. W.Va.  
Coal - State of West Virginia.

New Location   
Drill Deeper   
Abandonment

On 800' map # N 48

S 3 W 1

Company Cassady and Mackey  
 Address Star Route West Union, W.Va  
 Farm D.F.F. Yeater  
 Tract \_\_\_\_\_ Acres 4 3/4 Lease No. \_\_\_\_\_  
 Well (Farm) No. 3 and 4 Serial No. \_\_\_\_\_  
 Elevation (Spirit Level) See above at wells.  
 Quadrangle CENTERPOINT  
 County Doddridge District McClellan  
 Engineer E.C. Tabler  
 Engineer's Registration No. \_\_\_\_\_  
 File No. \_\_\_\_\_ Drawing No. \_\_\_\_\_  
 Date March 18<sup>th</sup> 1948 Scale 1" = 400 Feet

STATE OF WEST VIRGINIA  
DEPARTMENT OF MINES  
OIL AND GAS DIVISION  
CHARLESTON

WELL LOCATION MAP  
FILE NO. DOD-651-A-#3  
DOD-652-A-#4

+ Denotes location of well on United States Topographic Maps, scale 1 to 62,500, latitude and longitude lines being represented by border lines as shown.  
- Denotes one inch spaces on border line of original tracing.



549

STATE OF WEST VIRGINIA  
DEPARTMENT OF MINES  
OIL AND GAS DIVISION

WELL RECORD

Permit No. 65v A

Oil or Gas Well Oil (IND)

Company Leroy Cassady  
Address West Union Star Rt. W. Va.  
Farm D. F. Yeater Acres 43-1/4  
Location (waters) Franks Run  
Well No. 4 Elev. 985  
District McClellan County Doddridge  
The surface of tract is owned in fee by Walter E. Smith  
Smithfield, W. Va. Address Star Rt.  
Mineral rights are owned by State of W. Va.  
Address \_\_\_\_\_

Casing and Tubing	Used in Drilling	Left in Well	Packers
Size			Kind of Packer
16			
13			
10			Size of
8 1/4	1273	1273	Depth set
6 3/4	2047	2047	
5 3/16			
3			Perf. top
2			Perf. bottom
Liners Used			Perf. top
			Perf. bottom

Drilling commenced \_\_\_\_\_  
Drilling completed \_\_\_\_\_  
Date Shot 11-25-03 From 2139 To \_\_\_\_\_  
With 16 Quarts  
Open Flow /10ths Water in \_\_\_\_\_ Inch  
/10ths Merc. in \_\_\_\_\_ Inch  
Volume \_\_\_\_\_ Cu. Ft.  
Rock Pressure \_\_\_\_\_ lbs. \_\_\_\_\_ hrs.  
Oil \_\_\_\_\_ bbls., 1st 24 hrs.  
Fresh water \_\_\_\_\_ feet \_\_\_\_\_ feet  
Salt water \_\_\_\_\_ feet \_\_\_\_\_ feet

CASING CEMENTED \_\_\_\_\_ SIZE \_\_\_\_\_ No. Ft. \_\_\_\_\_ Date \_\_\_\_\_  
COAL WAS ENCOUNTERED AT 692 FEET \_\_\_\_\_ INCHES  
\_\_\_\_\_ FEET \_\_\_\_\_ INCHES FEET \_\_\_\_\_ INCHES  
\_\_\_\_\_ FEET \_\_\_\_\_ INCHES FEET \_\_\_\_\_ INCHES

Formation	Color	Hard or Soft	Top	Bottom	Oil, Gas or Water	Depth Found	Remarks
Pittsburgh Coal			692	695			
Dunkard			1260	1325			
Salt Sand			1485	1625			
Big Lime			1970	2039			
Big Injun			2041		Gas Oil	2126 241	
Total Depth						2167	

