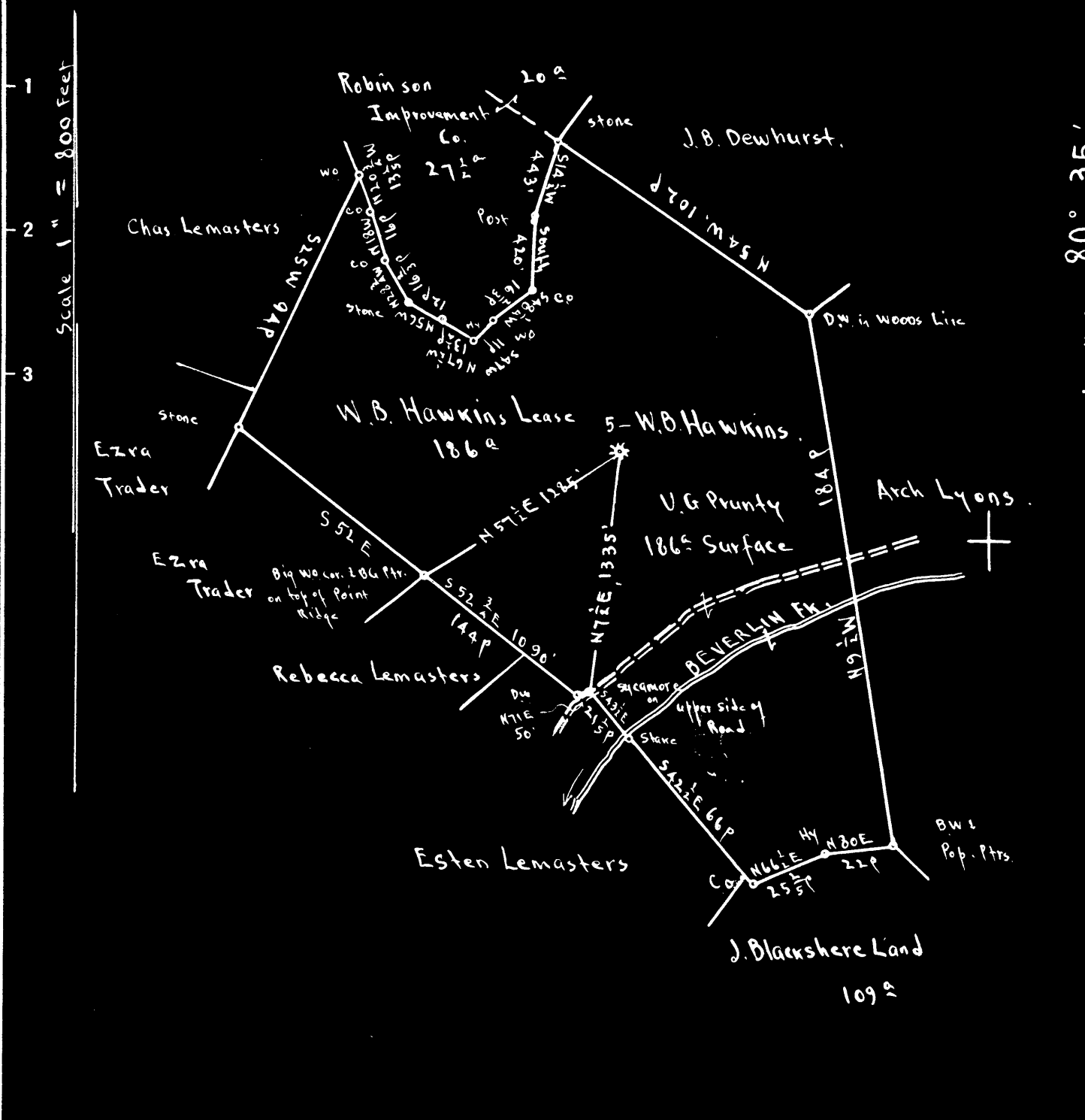


Latitude 39° 30'

Longitude 80° 35'



Surface : U.G. Prunty; R.F.D # 1, Folsom, Wetzel Co., W. Va.
 Coal : State of West Virginia.

- New Location
- Drill Deeper
- Abandonment

On Map N 48 51-2 E 1-2

Company Cassady & Mackey
 Address Star Route, West Union, W. Va.
 Farm W B Hawkins
 Tract _____ Acres 186 Lease No. _____
 Well (Farm) No. 5 Serial No. _____
 Elevation (Spirit Level) Floor - 1242.91
Ground - 1238.81
 Quadrangle CENTERPOINT
 County Doddridge District McClellan
 Engineer E. C. Tabler
 Engineer's Registration No. _____
 File No. _____ Drawing No. _____
 Date July 26th 1948 Scale 1" = 800 Feet

STATE OF WEST VIRGINIA
 DEPARTMENT OF MINES
 OIL AND GAS DIVISION
 CHARLESTON

WELL LOCATION MAP
 FILE NO. DOD-676-A

- + Denotes location of well on United States Topographic Maps, scale 1 to 62,500, latitude and longitude lines being represented by border lines as shown.
- Denotes one inch spaces on border line of original tracing.



STATE OF WEST VIRGINIA
DEPARTMENT OF MINES
OIL AND GAS DIVISION

677

WELL RECORD

Permit No. 46A

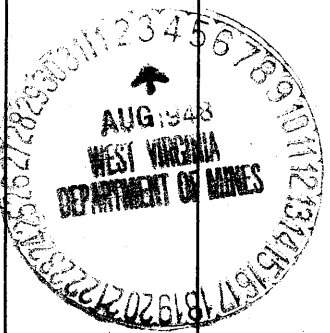
Oil or Gas Well (KIND)

Company Leroy Cassady
 Address Star Rt. West Union, W. Va.
 Farm W. B. Hawkins Acres 186
 Location (waters) Beverly Fork
 Well No. 5 Elev. 1238
 District McClellan County Boydridge
 The surface of tract is owned in fee by U. G. Prunty
 Address Folsom, W. Va.
 Mineral rights are owned by W. B. Hawkins
 Address _____
 Drilling commenced _____
 Drilling completed _____
 Date Shot 10/8/97 From 2355 To _____
 With 16 Qts Glycerine
 Open Flow /10ths Water in _____ Inch
 /10ths Merc. in _____ Inch
 Volume _____ Cu. Ft.
 Rock Pressure _____ lbs. _____ hrs.
 Oil _____ bbls., 1st 24 hrs.
 Fresh water _____ feet _____ feet
 Salt water _____ feet _____ feet

Casing and Tubing	Used in Drilling	Left in Well	Packers
Size			
16			Kind of Packer
13			
10	423	Plugged	Size of
8 1/4	1335	5 1/2 ft Pulled Out	
6 3/4	2233	2233	Depth set
5 3/16	2624	2624	
3			Perf. top
2			Perf. bottom
Liners Used			Perf. top
			Perf. bottom

CASING CEMENTED SIZE No. Ft. Date
 COAL WAS ENCOUNTERED AT FEET INCHES
 FEET INCHES FEET INCHES
 FEET INCHES FEET INCHES

Formation	Color	Hard or Soft	Top	Bottom	Oil, Gas or Water	Depth Found	Remarks
Pittsburgh Coal			912	917			
Big Lime			2205	2288			
Big Ijun			2288		Gas Oil	2343 2358	
Stra/Sand			2975	2990			
Gordon Sand			None				
4th Sand			3040	3054	Gas Gas	3042 to 3045 3050 to 3052	
Total Depth				3058			



Formation	Color	Hard or Soft	Top	Bottom	Oil, Gas or Water	Depth Found	Remarks

Date August 2, 1918

APPROVED *Henry Cassidy*, Owner

By Owner (Title)

McClellan District, Doddridge County, W. Va.

By Leroy Cassidy, West Union, W. Va.

Abandoned under permit No. 100-.....-A7

On 106 acres, on Beverlin Fork.

Elevation, 1238' L.

Surface owned by U. G. Frunty, Folsom, W. Va., and minerals by W. B. Hawkins

Shot Oct. 8, 1897, at 2355', with 16 qts. glycerine.

10" casing, 423' (pulled); 8 1/2", 1335' (501' pulled out); 6 1/2", 2233';
5", 2624'.

Gas well. Record to Dept. of Mines dated Aug. 2, 1948.

Record to RCT from Mrs. Griffith Nov. 4, 1949. Old file No. 677.

	Top.	Bottom.
Pittsburgh Coal	912	- 917
Big Line	2205	- 2288
Big Injun Sand (gas, 2343'; oil, 2358')	2288	-
Stray Sand	2975	- 2990
Gordon Sand		None
4th Sand (gas, 3042-3045' and 3050- 3052')	3040	- 3054
Total depth		3058