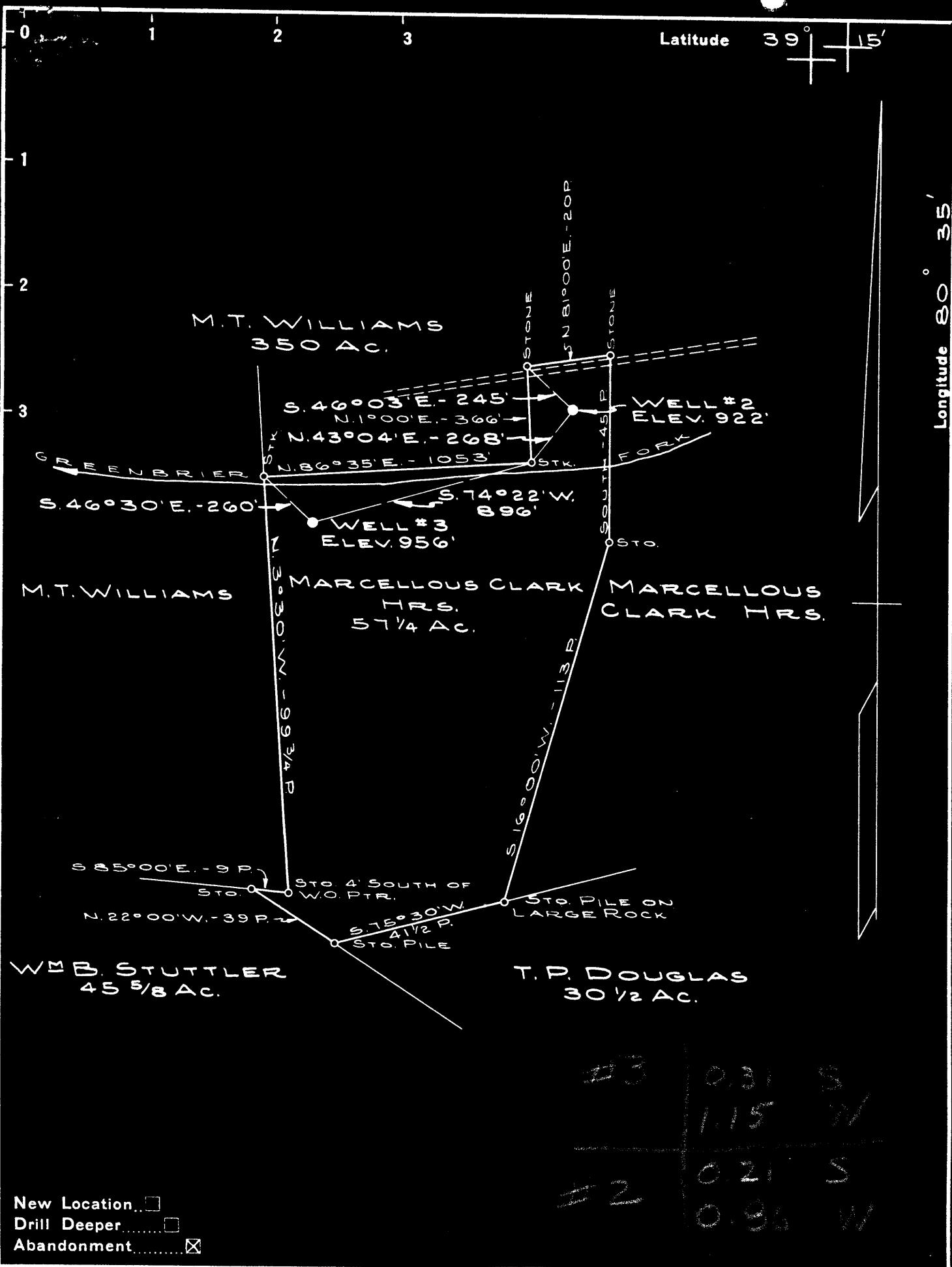


Latitude 39° 15'

Longitude 80° 35'



New Location...
 Drill Deeper.....
 Abandonment.....

Company PITTSBURG OIL & GAS CO.
 Address SALEM, W. VA.
 Farm M.V. Snyder MARCELLOUS CLARK MRS.
 Tract _____ Acres 57 1/4 Lease No. Surf.
 Well (Farm) No. _____ Serial No. #2 & #3
 Elevation (Spirit Level) =2-922', #3-956
 Quadrangle VADIS
 County DOODRIDGE District GREENBRIER
 Engineer N.D. LINGER, SR.
 Engineer's Registration No. O.K. M.L.B. Linger 261
 File No. _____ Drawing No. _____
 Date 7-9-48 Scale 1" = 30 POLES

STATE OF WEST VIRGINIA
 DEPARTMENT OF MINES
 OIL AND GAS DIVISION
 CHARLESTON

WELL LOCATION MAP

FILE NO. DOD-681-A #3

+ Denotes location of well on United States Topographic Maps, scale 1 to 62,500, latitude and longitude lines being represented by border lines as shown.

- Denotes one inch spaces on border line of original tracing.

WEST VIRGINIA DEPARTMENT OF MINES
OIL AND GAS DIVISION

588

WELL RECORD

Permit No. 681-A

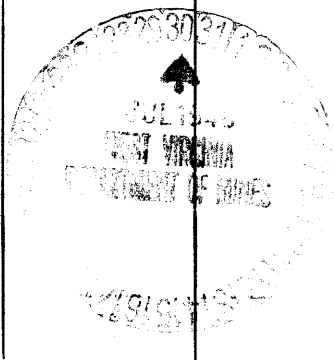
Oil or Gas Well GAS & OIL
(Kind)

Company Pittsburg Oil & Gas Company
 Address 841 Oliver Bldg. Pittsburgh, Pa.
 Farm M. V. Snider Acres 60
 Location (waters).....
 Well No. 3 Elev. 956
 District Greenbriar County Doddridge
 The surface of tract is owned in fee by.....
 Address.....
 Mineral rights are owned by.....
 Address.....
 Drilling commenced Nov. 17, 1902
 Drilling completed Jan. 1, 1903
 Date shot Mar. 4, 1903 Depth of shot 2763'-2771'
 Open Flow /10ths Water in..... Inch
 /10ths Merc. in..... Inch
 Volume..... Cu. Ft.
 Rock Pressure..... lbs..... hrs.
 Oil..... bbls., 1st 24 hrs.
 Fresh water..... feet..... feet
 Salt water..... feet..... feet

Casing and Tubing	Used in Drilling	Left in Well	Packers
Size			
16			Kind of Packer.....
13			
10	<u>395'</u>		Size of.....
8 1/4	<u>1150'</u>	<u>600'</u>	
6 5/8	<u>2179'</u>		Depth set.....
5 3/16			
3			Perf. top.....
2			Perf. bottom.....
Liners Used <u>205' 6" - 5 3/16 Colar</u>			Perf. top.....
<u>Liner hung on Cane Packer Top</u>			Perf. bottom.....
<u>at 2554'</u>			

CASING CEMENTED..... SIZE..... No. FT..... Date.....
 COAL WAS ENCOUNTERED AT..... FEET..... INCHES
 FEET..... INCHES..... FEET..... INCHES
 FEET..... INCHES..... FEET..... INCHES

Formation	Color	Hard or Soft	Top	Bottom	Oil Gas or Water	Depth Found	Remarks
Pgh Coal			655'				
Gordon Sand			2762'	2771'			
TOTAL DEPTH				2772'			



JAN 22 1943

(Over)

Formation	Color	Hard or Soft	Top	Bottom	Oil, Gas or Water	Depth Found	Remarks

Date July 28, 1948, 19.

APPROVED PITTSBURG OIL & GAS COMPANY, Owner

By *[Signature]*
V.Pres. & Gen. Mgr (title)