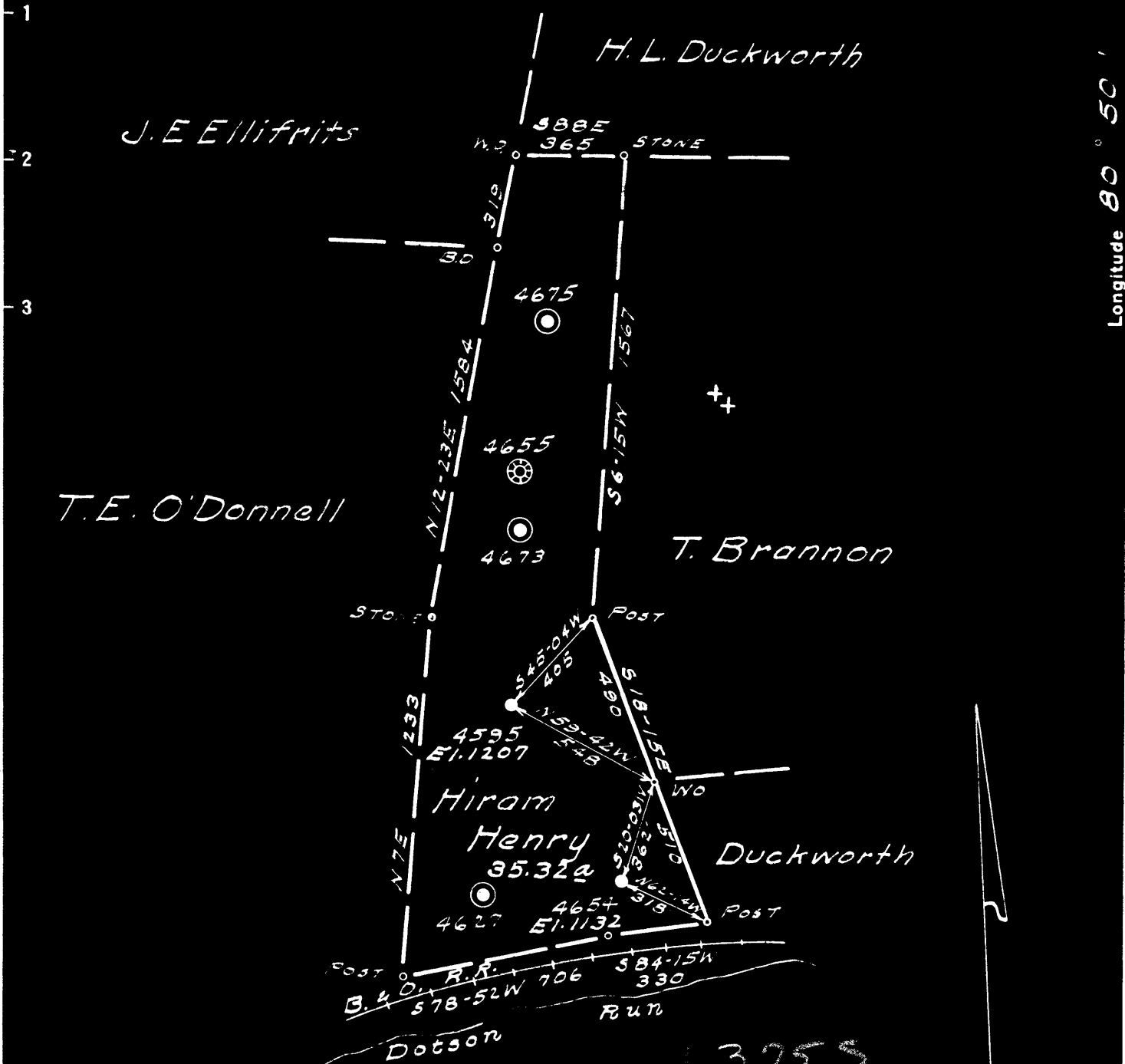


Latitude 39 20

Longitude 80 50



| | |
|--------|--------|
| # 4595 | 3.75 S |
| | 2.80 W |
| # 4654 | 3.32 S |
| | 2.71 W |

New Location
 Drill Deeper
 Abandonment

Company Philadelphia Oil Co.
 Address Clarksburg W.Va.
 Farm Hiram Henry
 Tract _____ Acres 35.32 Lease No. 16094
 Well (Farm) No. 1 & 3 Serial No. 4595
 Elevation (Spirit Level) As shown
 Quadrangle West Union SW 42-4
 County Doddridge District Central
 Engineer James D. J. J.
 Engineer's Registration No. 1084
 File No. D-1/3 Drawing No. _____
 Date 7-6-37 Scale 1"=500'

STATE OF WEST VIRGINIA
 DEPARTMENT OF MINES
 OIL AND GAS DIVISION
 CHARLESTON

WELL LOCATION MAP

FILE NO. DOD-732-A-# 4595
DOD-733-A-# 4654

+ Denotes location of well on United States Topographic Maps, scale 1 to 62,500, latitude and longitude lines being represented by border lines as shown.

- Denotes one inch spaces on border line of original tracing.



STATE OF WEST VIRGINIA
DEPARTMENT OF MINES
OIL AND GAS DIVISION

624

WELL RECORD

Permit No. 733-A

Oil or Gas Well **"OIL"**
(KIND)

Company PHILADELPHIA OIL COMPANY.
Address Clarksburg, West Va.
Farm Hiram Henry Acres 35
Location (waters) West Union S/W. 4-2-4
Well No. 4654 Elev. 1132' L
District Central County Doddridge
The surface of tract is owned in fee by Wm. E. Deak
Address Greenwood, W. Va.

Mineral rights are owned by _____
Address _____
Drilling commenced March 20th, 1918
Drilling completed April 26, 1918
Date Shot _____ From _____ To _____
With _____

Open Flow _____ /10ths Water in _____ Inch
_____ /10ths Merc. in _____ Inch
Volume _____ Cu. Ft.
Rock Pressure _____ lbs. _____ hrs.
Oil _____ bbls., 1st 24 hrs.
Fresh water _____ feet _____ feet
Salt water _____ feet _____ feet

| Casing and Tubing | Used in Drilling | Left in Well | Packers |
|-------------------|------------------|--------------|----------------|
| Size | | | Kind of Packer |
| 16 | | | |
| 13 | | | |
| 10 | <u>575'</u> | <u>575'</u> | Size of |
| 8 1/4 | <u>1030'</u> | <u>1030'</u> | |
| 6 5/8 | <u>1460'</u> | <u>1460'</u> | Depth set |
| 5 3/16 | | | |
| 3 | | | Perf. top |
| 2 | | | Perf. bottom |
| Liners Used | | | Perf. top |
| | | | Perf. bottom |

CASING CEMENTED _____ SIZE _____ No. Ft. _____ Date _____
COAL WAS ENCOUNTERED AT 563 FEET 24 INCHES
_____ FEET _____ INCHES FEET _____ INCHES
_____ FEET _____ INCHES FEET _____ INCHES

| Formation | Color | Hard or Soft | Top | Bottom | Oil, Gas or Water | Depth Found | Remarks |
|----------------|-------|--------------|------|--------|-------------------|-------------|---------|
| Clay | White | Soft | 0 | 10 | | | |
| Sand | " | Hard | 10 | 35 | | | |
| Red Rock | Red | Soft | 35 | 60 | | | |
| Lime | Dark | Hard | 60 | 110 | | | |
| Slate | " | Soft | 110 | 135 | | | |
| Red Rock | Red | " | 135 | 185 | | | |
| Sand | White | Hard | 185 | 205 | | | |
| Slate | Dark | Soft | 205 | 240 | | | |
| Sand | White | Hard | 240 | 260 | | | |
| Red Rock | Red | Soft | 260 | 310 | | | |
| Sand | White | Hard | 310 | 340 | | | |
| Slate | Dark | Soft | 340 | 350 | | | |
| Sand | White | Hard | 350 | 400 | | | |
| Slate | Dark | Soft | 400 | 460 | | | |
| Sand | White | Hard | 460 | 505 | | | |
| Lime | Dark | " | 505 | 540 | | | |
| Slate | " | Soft | 540 | 563 | | | |
| Coal | Black | " | 563 | 565 | | | |
| Lime | Dark | Hard | 565 | 625 | | | |
| Slate/Shell | " | " | 625 | 700 | | | |
| Red Rock | Red | Soft | 700 | 770 | | | |
| Lime | White | Hard | 770 | 795 | | | |
| Red Rock | Red | Soft | 795 | 850 | | | |
| Sand | White | Hard | 850 | 880 | | | |
| Lime | Dark | " | 880 | 890 | | | |
| Slate | " | Soft | 890 | 900 | | | |
| Little Duskard | White | Hard | 900 | 940 | | | |
| Lime | Dark | " | 940 | 965 | | | |
| Slate | " | Soft | 965 | 1025 | | | |
| Big Duskard | White | Hard | 1025 | 1040 | | | |
| Slate | Dark | Soft | 1040 | 1070 | | | |
| Sand | White | Hard | 1070 | 1150 | | | |
| Slate | Dark | Soft | 1150 | 1335 | | | |
| 1st. Salt Sand | " | Hard | 1335 | 1360 | | | |
| Slate | " | Soft | 1360 | 1395 | | | |
| 2nd. Salt Sand | " | Hard | 1395 | 1440 | | | |
| Slate | " | Soft | 1440 | 1450 | | | |
| Sand | White | Hard | 1450 | 1510 | | | |
| Slate | Dark | Soft | 1510 | 1590 | | | |

0



| Formation | Color | Hard or Soft | Top | Bottom | Oil, Gas or Water | Depth Found | Remarks |
|------------------|--------|--------------|------|--------|-------------------|-------------|---------|
| 3rd. Salt Sd. | White | Hard | 1530 | 1570 | | | |
| Slate & Shells | Dark | " | 1570 | 1723 | | | |
| Masson Sand | White | " | 1723 | 1762 | | | |
| Slate | Dark | Soft | 1762 | 1767 | | | |
| Lime | White | Hard | 1767 | 1787 | | | |
| Slate | Dark | Soft | 1787 | 1797 | | | |
| Lime (Big) | White | Hard | 1797 | 1885 | | | |
| Big Injan | Yellow | " | 1885 | | Oil | 1912-1920 | |
| Total Depth..... | | | | 1930 | | | |

October 4th, 1946

Date _____, 19____

PHILADELPHIA OIL COMPANY.

APPROVED _____

Owner

By W. J. Masten
(Title)

Central District, Doddridge County, W. Va.
 By Philadelphia Oil Co., Clarksburg, W. Va.
 Abandoned under permit No.-A1
 On 35 acres; West Union S/W 4-2-4.
 Elevation, 1132' L.
 Surface owned by Wm. H. Deak, Greenwood, W. Va.
 Drilling commenced March 20, 1918; completed April 26, 1918.
 10" casing, 575'; 8 1/2", 1030'; 6 3/8", 1460'; all left in.
 Coal was encountered at 563-565'.
 Oil well. Abandonment reported to Dept. of Mines Oct. 4, 1946.
 Record to Dept. of Mines stamped March 11, 1949.
 Record to RCF from Mrs. Griffith Aug. 10, 1949. Old File No. 624.

| | Top. | Bottom. |
|----------------------------------|------|---------|
| Clay, white, soft | 0 | 10 |
| Sand, white, hard | 10 | 35 |
| Red rock, soft | 35 | 60 |
| Lime, dark, hard | 60 | 110 |
| Slate, dark, soft | 110 | 135 |
| Red rock, soft | 135 | 185 |
| Sand, white, hard | 185 | 205 |
| Slate, dark, soft | 205 | 240 |
| Sand, white, hard | 240 | 260 |
| Red rock, soft | 260 | 310 |
| Sand, white, hard | 310 | 340 |
| Slate, dark, soft | 340 | 350 |
| Sand, white, hard | 350 | 400 |
| Slate, dark, soft | 400 | 460 |
| Sand, white, hard | 460 | 505 |
| Lime, dark, hard | 505 | 540 |
| Slate, dark, soft | 540 | 563 |
| Coal, black, soft | 563 | 565 |
| Lime, dark, hard | 565 | 625 |
| Slate and shells, dark, hard | 625 | 700 |
| Red rock, soft | 700 | 770 |
| Lime, white, hard | 770 | 795 |
| Red rock, soft | 795 | 850 |
| Sand, white, hard | 850 | 880 |
| Lime, dark, hard | 880 | 890 |
| Slate, dark, soft | 890 | 900 |
| Little Dunkard Sand, white, hard | 900 | 940 |
| Lime, dark, hard | 940 | 965 |
| Slate, dark, soft | 965 | 1025 |
| Big Dunkard Sand, white, hard | 1025 | 1040 |
| Slate, dark, soft | 1040 | 1070 |
| Sand, white, hard | 1070 | 1150 |
| Slate, dark, soft | 1150 | 1335 |
| 1st Salt Sand, dark, hard | 1335 | 1360 |
| Slate, dark, soft | 1360 | 1395 |
| 2nd Salt Sand, dark, hard | 1395 | 1440 |
| Slate, dark, soft | 1440 | 1450 |
| Sand, white, hard | 1450 | 1510 |
| Slate, dark, soft | 1510 | 1530 |
| 3rd Salt Sand, white, hard | 1530 | 1570 |
| Slate and shells, dark, hard | 1570 | 1723 |
| Marten Sand, white, hard | 1723 | 1762 |
| Slate, dark, soft | 1762 | 1767 |

(OVER)

HIRAM HENRY NO. 4654 WELL (Continued).

| | Top. | Bottom. |
|--|------|---------|
| lime, white, hard | 1767 | - 1767 |
| Slate, dark, soft | 1767 | - 1797 |
| Big Lime, white, hard | 1797 | - 1885 |
| Big Injun Sand, yellow, hard (all, 1912-1920') | 1885 | - ---- |
| Total depth | | 1930 |