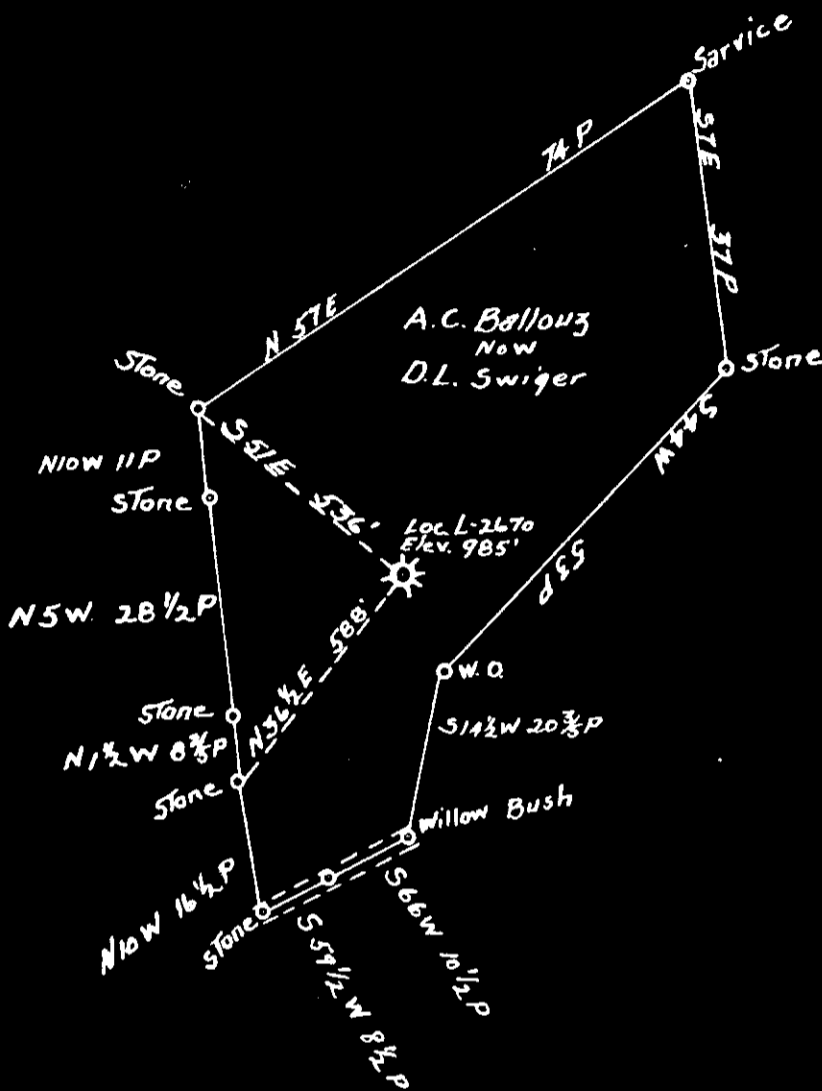


LATITUDE 39 ° 25'

LONGITUDE 80 ° 35'



1.30 S  
0.32 W

COAL OWNED BY A.C. Ballouz Est.  
New Martinsville W. Va.

NEW LOCATION.....

DRILL DEEPER.....

ABANDONMENT.....

COMPANY The Manufacturers Light & Heat Co.

ADDRESS 800 Union Trust Bldg Pittsburgh Pa.

FARM D.L. Swiger (A.C. Ballouz)

TRACT \_\_\_\_\_ ACRES 21.62 LEASE NO. 8228

WELL (FARM) NO. 1 SERIAL NO. L-2670

ELEVATION (SPIRIT LEVEL) 985'

QUADRANGLE Centerpoint

COUNTY Doddridge DISTRICT McClellan

ENGINEER \_\_\_\_\_

ENGINEER'S REGISTRATION NO. \_\_\_\_\_

FILE NO. \_\_\_\_\_ DRAWING NO. Y-13-178

DATE April 26 1949 SCALE 1" = 400'

STATE OF WEST VIRGINIA  
DEPARTMENT OF MINES  
OIL AND GAS DIVISION  
CHARLESTON

**WELL LOCATION MAP**

FILE NO. DOD-741-A

+ DENOTES LOCATION OF WELL ON UNITED STATES TOPOGRAPHIC MAPS. SCALE 1 TO 62,500. LATITUDE AND LONGITUDE LINES BEING REPRESENTED BY BORDER LINES AS SHOWN.

- DENOTES ONE INCH SPACES ON BORDER LINE OF ORIGINAL TRACING.



STATE OF WEST VIRGINIA  
DEPARTMENT OF MINES  
OIL AND GAS DIVISION

628

WELL RECORD

Permit No. AD 41-A

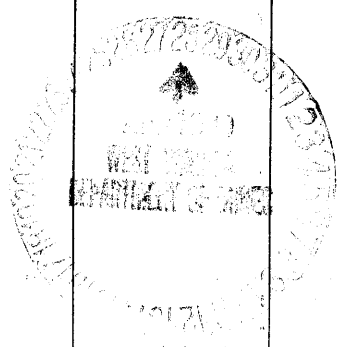
Oil or Gas Well   
(KIND)

Company The Manufacturers Light & Heat Company  
 Address 800 Union Trust Bldg., Pittsburgh, Pa.  
 Farm A. C. Ballous Acres 21  
 Location (waters) \_\_\_\_\_  
 Well No. 2670 Elev. 985  
 District McClellan County Doddridge  
 The surface of tract is owned in fee by Mary Ballous, Exrx.  
New Martinsville, W. Va. Address \_\_\_\_\_  
 Mineral rights are owned by The Manufacturers Light & Heat Co.  
800 Union Trust Bldg. Address Pittsburgh, Pa.  
 Drilling commenced May 31, 1921  
 Drilling completed July 7, 1921  
 Date Shot \_\_\_\_\_ From \_\_\_\_\_ To \_\_\_\_\_  
 With \_\_\_\_\_  
 Open Flow \_\_\_\_\_ /10ths Water in \_\_\_\_\_ Inch  
 \_\_\_\_\_ /10ths Merc. in \_\_\_\_\_ Inch  
 Volume \_\_\_\_\_ Cu. Ft.  
 Rock Pressure \_\_\_\_\_ lbs \_\_\_\_\_ hrs.  
 Oil \_\_\_\_\_ bbls., 1st 24 hrs.  
 Fresh water \_\_\_\_\_ feet \_\_\_\_\_ feet  
 Salt water \_\_\_\_\_ feet \_\_\_\_\_ feet

Casing and Tubing	Used in Drilling	Left in Well	Packers
Size			
16			Kind of Packer
13			
10	299		Size of
8 1/4	1126	1126	
6	1923	1923	Depth set
5 3/16			
3			Perf. top
2			Perf. bottom
Liners Used			Perf. top
			Perf. bottom

CASING CEMENTED \_\_\_\_\_ SIZE \_\_\_\_\_ No. Ft. \_\_\_\_\_  
 COAL WAS ENCOUNTERED AT 520 FEET 144 INCHES  
 \_\_\_\_\_ FEET \_\_\_\_\_ INCHES \_\_\_\_\_ FEET \_\_\_\_\_ INCHES  
 \_\_\_\_\_ FEET \_\_\_\_\_ INCHES \_\_\_\_\_ FEET \_\_\_\_\_ INCHES

Formation	Color	Hard or Soft	Top	Bottom	Oil, Gas or Water	Depth Found	Remarks
Pittsburgh Coal			520	532			
Big Dunkard			1090	1225			
Gas Sand			1260	1310			
1st. Salt Sand			1355	1390			Water @ 1280 5 bailers per hr.
2nd. Salt Sand			1440	1480			
Little Lime			1775	1905			
Pencil Cave			1905	1913			
Big Lime			1913	1938			
Big Injun			1938	1983			show of gas @ 1946, gas @ 1960-1965 made 40/10 water in 2" opening.
Fifty Foot Sand			2542	2587			
Thirty Foot Sand			2615	2625			
Lime & Shells			2625	2645			
Slate			2645	2656			
Gordon Sand			2656	2662			
Slate			2662	2720			
Gritty Lime			2720	2726			
Slate			2726	2824			
TOTAL DEPTH				2824			



C

Formation	Color	Hard or Soft	Top	Bottom	Oil, Gas or Water	Depth Found	Remarks

Date APRIL 27, 1949

APPROVED THE MANUFACTURERS LIGHT & HEAT CO., Owner

By R. D. Weaver LAND AGENT.  
(Title)

McClellan District, Lederidge County, W. Va.

By The Manufacturers Light & Heat Co., 800 Union Trust Bldg., Pittsburgh, Pa.

Abandoned under permit No. ....-A?

On 21 acres.

Elevation, 985' L.

Surface owned by Mary Ballouz, Exrx., New Martinsville, W. Va., and mineral  
by The Manufacturers Light & Heat Co., 800 Union Trust Bldg., Pitts-  
burgh, Pa.

Drilling commenced May 31, 1921; completed July 7, 1921.

10" casing, 299' (pulled); 8", 1126'; 6", 1923'.

Coal was encountered at 520-532'.

Gas well. Record to Dept. of Mines dated April 27, 1949.

Record to RCT from Mrs. Griffith September 14, 1949. Old File No. 628.

	Top.	Bottom.
Pittsburgh Coal	520	532
Big Dunkard Sand	1090	1225
Gas Sand (water at 1280', 5 bailers per hour)	1260	1310
1st Salt Sand	1355	1390
2nd Salt Sand	1440	1480
Little Lime	1775	1905
Pencil Cave	1905	1913
Big Lime	1913	1938
Big Injun Sand (show of gas at 1946'; gas at 1960-1965'; made 40/10 " in 2" op.)	1938	1983
Fifty-foot Sand	2542	2587
Thirty-foot Sand	2615	2625
Lime and shells	2625	2645
Slate	2645	2656
Gordon Sand	2656	2662
Slate	2662	2720
Gitty lime	2720	2726
Slate	2726	2824
Total depth		2824