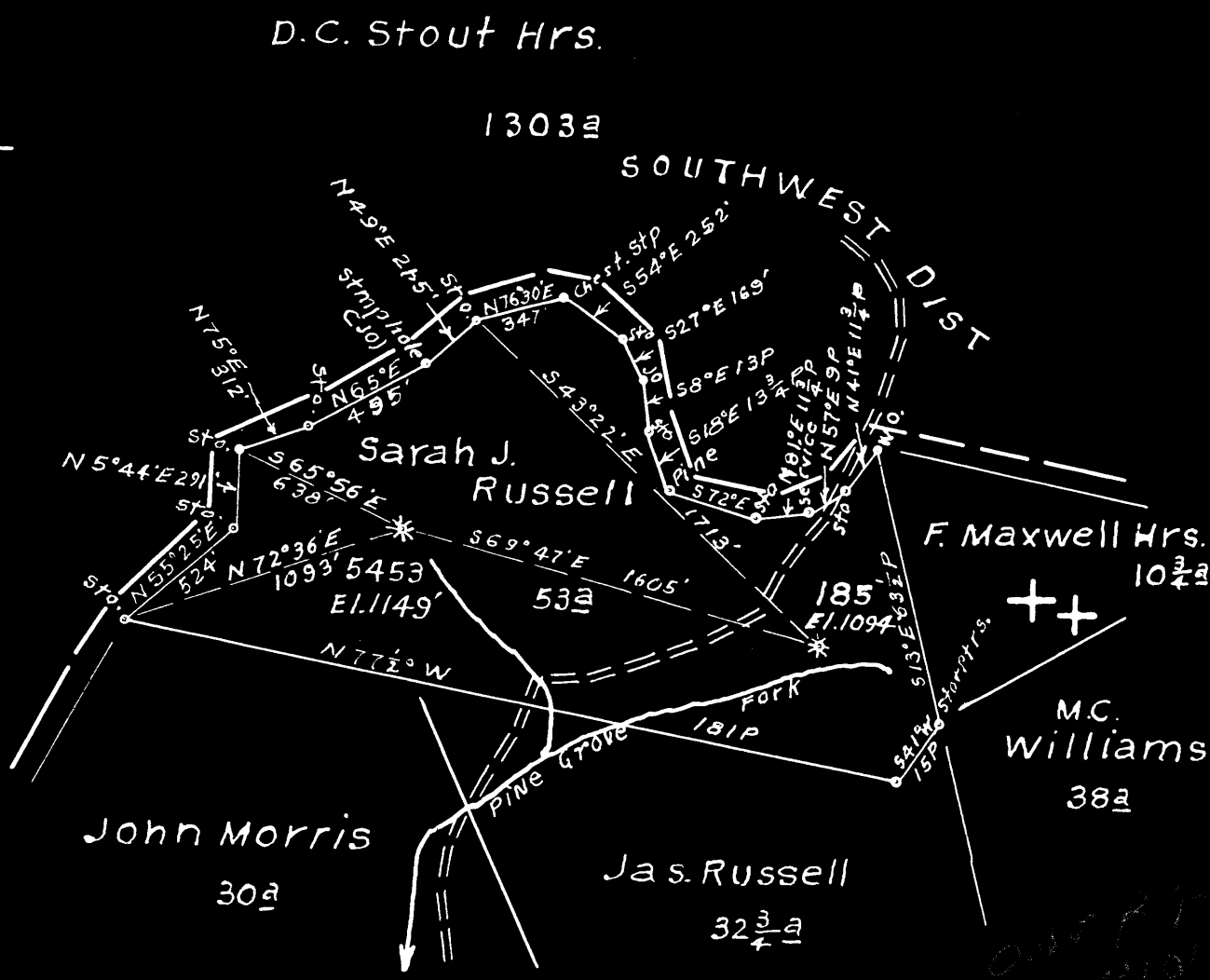


1  
2  
3



# 185 1095 W  
 5453 590 S  
 118 W

New Location   
 Drill Deeper   
 Abandonment  185 - 5453

Map Sh. 68 S19-20W 9-10FB.932 P.3-78

Company Hope Natural Gas Co.  
 Address Clarksburg, W Va.  
 Farm Sarah J. Russell  
 Tract \_\_\_\_\_ Acres 53 Lease No. 779  
 Well (Farm) No. \_\_\_\_\_ Serial No. As Shown  
 Elevation (Spirit Level) As Shown  
 Quadrangle Holbrook  
 County Doddridge District Cove  
 Engineer Wm Bowers  
 Engineer's Registration No. 900  
 File No. \_\_\_\_\_ Drawing No. \_\_\_\_\_  
 Date 5-9-49 Scale 1" = 40 P

STATE OF WEST VIRGINIA  
 DEPARTMENT OF MINES  
 OIL AND GAS DIVISION  
 CHARLESTON

WELL LOCATION MAP

FILE NO. DOD-745-A-#185  
DOD-746-A-#5453

+ Denotes location of well on United States Topographic Maps, scale 1 to 62,500, latitude and longitude lines being represented by border lines as shown.

- Denotes one inch spaces on border line of original tracing.



STATE OF WEST VIRGINIA  
DEPARTMENT OF MINES  
OIL AND GAS DIVISION

637

WELL RECORD

Permit No. 716-A

~~Oil~~ or Gas Well \_\_\_\_\_ (KIND)

Company Hope Natural Gas Company.  
Address 445 West Main St. Clarksburg, W. Va.  
Farm Sarah J. Russell Acres 53  
Location (waters) \_\_\_\_\_  
Well No. 5453 Elev. 1149  
District Cove, County Doddridge  
The surface of tract is owned in fee by \_\_\_\_\_  
Address \_\_\_\_\_  
Mineral rights are owned by \_\_\_\_\_  
Address \_\_\_\_\_  
Drilling commenced February 19, 1919  
Drilling completed April 4, 1919  
Date Shot \_\_\_\_\_ From \_\_\_\_\_ To \_\_\_\_\_  
With \_\_\_\_\_  
Open Flow \_\_\_\_\_ /10ths Water in \_\_\_\_\_ Inch  
\_\_\_\_\_ /10ths Merc. in \_\_\_\_\_ Inch  
Volume \_\_\_\_\_ Cu. Ft.  
Rock Pressure \_\_\_\_\_ lbs. \_\_\_\_\_ hrs.  
Oil \_\_\_\_\_ bbls., 1st 24 hrs.  
Fresh water \_\_\_\_\_ feet \_\_\_\_\_ feet  
Salt water 1376 feet \_\_\_\_\_ feet

Casing and Tubing	Used in Drilling	Left in Well	Packers
Size			Kind of Packer
16			
13			
10	<b>308</b>	<b>Pulled</b>	Size of
8 3/4	<b>1238</b>	<b>1238</b>	
6 5/8	<b>2005</b>	<b>2005</b>	Depth set
5 3/16			
3			Perf. top
2			Perf. bottom
Liners Used			Perf. top
			Perf. bottom

**NOT**  
CASING CEMENTED \_\_\_\_\_ SIZE \_\_\_\_\_ No. Ft. \_\_\_\_\_ Date \_\_\_\_\_  
~~none~~ **none recorded**  
COAL WAS ENCOUNTERED AT \_\_\_\_\_ FEET \_\_\_\_\_ INCHES  
\_\_\_\_\_ FEET \_\_\_\_\_ INCHES FEET \_\_\_\_\_ INCHES  
\_\_\_\_\_ FEET \_\_\_\_\_ INCHES FEET \_\_\_\_\_ INCHES

Formation	Color	Hard or Soft	Top	Bottom	Oil, Gas or Water	Depth Found	Remarks
Little Dunkard			1038	1058			
Big Dunkard			1169	1200			
Gas sand			1272	1300			
First Salt			1371	1427	water	1376	
Second Salt			1695	1763	gas	1753	
Maxon			1897	1907			
Big Lime			1907	1963			
Big Injun			1963	2050			
Berea			2179	2300			
Gauley			2435	2438			
Gordon stray			2594	2596			
Gordon			2599	2612			
Total depth				2646			

