

Latitude 39°20'00"

75'  
+

80°47'30"

Longitude

Topo Location

7.5' Loc. 0.785 15' Loc. 0.785  
1.56W (calc.) 3.79W

Company \_\_\_\_\_ #4773

Farm W.K. Skinn

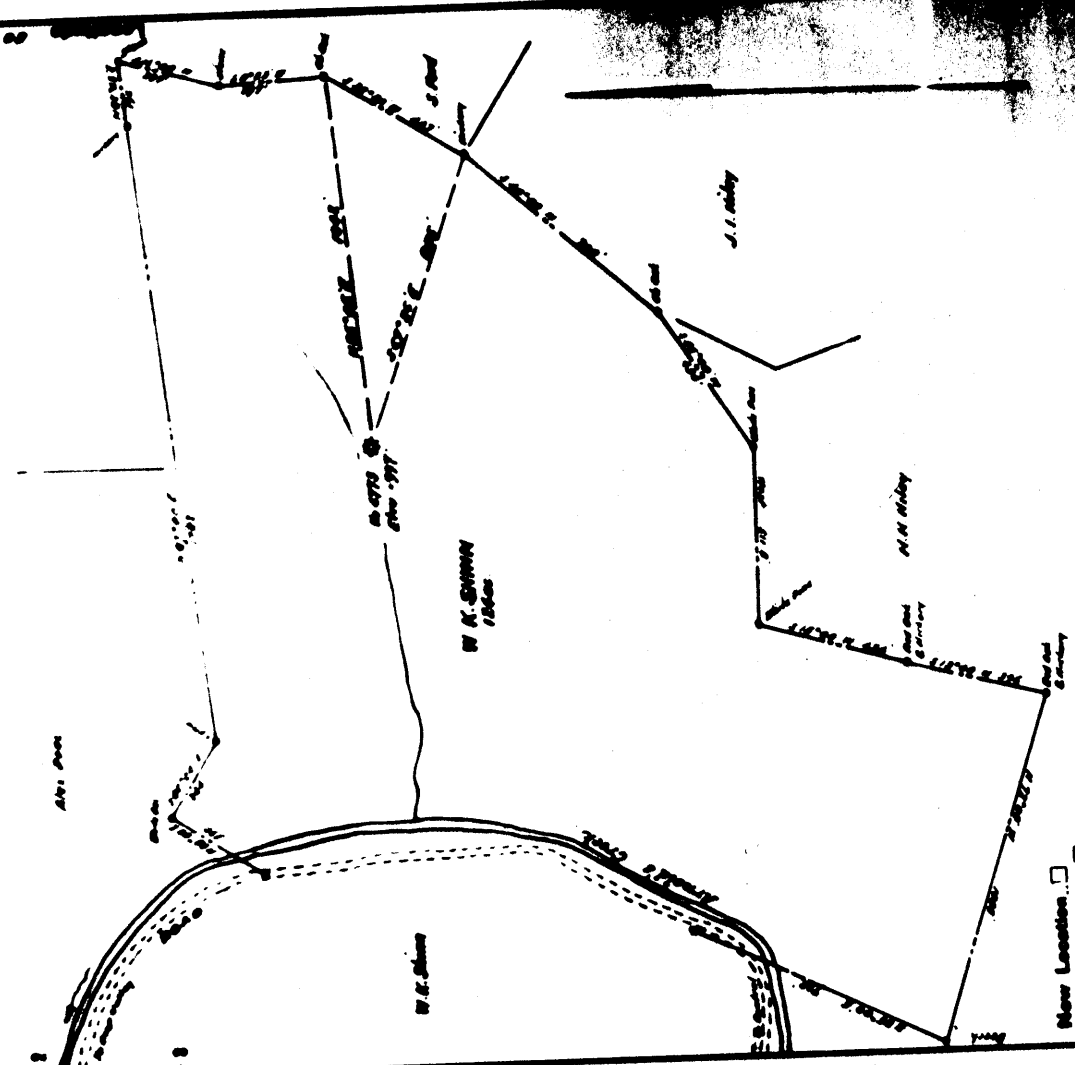
15' Quad West Union SE  
(sec.)

7.5' Quad West Union

District Centreal

WELL LOCATION PLAT

County 017 Permit 30930



STATE OF WEST VIRGINIA  
 DEPARTMENT OF MINES  
 OIL AND GAS DIVISION  
 CHARLESTON

WELL LOCATION MAP  
 FILE NO. DOD-3242-1911

+ Denotes location of well on United States  
 Transverse Mercator, scales 1 to 62,500, etc.

New Location   
 Drill Deeper   
 Abandonment

Company	W.D. CORNELL
Address	Washington, W. Va.
Farm	W. H. Shinn
Tract	Acres 124 Lease No.
Well (Farm) No.	Serial No.
Elevation (Spirit Level)	337
Quadrangle	West Union



1070

STATE OF WEST VIRGINIA  
DEPARTMENT OF MINES  
OIL AND GAS DIVISION

Quadrangle West Union  
Permit No. 930-A (Renewal)

WELL RECORD

Oil or Gas Well Gas  
(KIND)

Company W. D. Gribble (W. D. Gribble)  
Address West Union, W. Va.  
Farm W. K. Shinn Acres 124  
Location (waters) Arnolds Creek  
Well No. H.N. Gas Co. #4773 Elev. 997'  
District Central County Doddridge  
The surface of tract is owned in fee by W. K. Shinn Hrs.  
West Union, W. Va. Address \_\_\_\_\_

Mineral rights are owned by \_\_\_\_\_  
Address \_\_\_\_\_

Drilling commenced \_\_\_\_\_  
Drilling completed \_\_\_\_\_  
Date Shot \_\_\_\_\_ From \_\_\_\_\_ To \_\_\_\_\_  
With \_\_\_\_\_

Open Flow /10ths Water in \_\_\_\_\_ Inch  
/10ths Merc. in \_\_\_\_\_ Inch

Volume \_\_\_\_\_ Cu. Ft.  
Rock Pressure \_\_\_\_\_ lbs. \_\_\_\_\_ hrs.

Oil \_\_\_\_\_ bbls., 1st 24 hrs.

WELL ACIDIZED \_\_\_\_\_

WELL FRACTURED \_\_\_\_\_

RESULT AFTER TREATMENT \_\_\_\_\_

ROCK PRESSURE AFTER TREATMENT \_\_\_\_\_

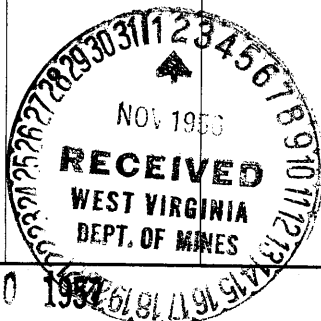
Fresh Water \_\_\_\_\_ Feet Salt Water \_\_\_\_\_ Feet

Casing and Tubing	Used in Drilling	Left in Well	Packers
Size			Kind of Packer
16			
13			
10			Size of
8 1/4	1103	1103	
6 5/8	1914	1914	Depth set
5 3/16			
3			Perf. top
2	2615	2615	Perf. bottom
Liners Used			Perf. top
			Perf. bottom

CASING CEMENTED \_\_\_\_\_ SIZE \_\_\_\_\_ No. Ft. \_\_\_\_\_ Date \_\_\_\_\_

COAL WAS ENCOUNTERED AT \_\_\_\_\_ FEET \_\_\_\_\_ INCHES  
\_\_\_\_\_ FEET \_\_\_\_\_ INCHES FEET \_\_\_\_\_ INCHES  
\_\_\_\_\_ FEET \_\_\_\_\_ INCHES FEET \_\_\_\_\_ INCHES

Formation	Color	Hard or Soft	Top	Bottom	Oil, Gas or Water	Depth	Remarks
Pittsburgh Coal			605	606			
Dunkard Sand			1005	1107			
SALT SAND			1250	1690			
Maxon Sand			1772	1788			
BIG INJUN			1942	2036			
Gantz			2187	2300			
Gordon Stray			2576	2587			
Gordon			2592	2609			
Total Depth				2615	Gas 1943-46 Gas 2032-36		



(over) JUN 20 1952

**AFFIDAVIT OF PLUGGING AND FILLING WELL**

AFFIDAVIT SHOULD BE MADE IN TRIPlicate  
 ONE COPY TO BE FILED IN THE OFFICE OF THE SUPERVISOR OF MINING  
 ONE COPY TO BE FILED IN THE OFFICE OF THE COUNTY CLERK  
 ONE COPY TO BE FILED IN THE OFFICE OF THE COUNTY ENGINEER

NAME OF OPERATOR OR TRUSTEES \_\_\_\_\_  
 ADDRESS \_\_\_\_\_  
 PHONE NO. \_\_\_\_\_

WELL AND LOCATION \_\_\_\_\_  
 DISTRICT \_\_\_\_\_  
 COUNTY \_\_\_\_\_

WELL No. **4773** Farm \_\_\_\_\_

**STATE INDEPENDENT SUPERVISING PLUGGING**

**AFFIDAVIT**

I, \_\_\_\_\_  
 County of \_\_\_\_\_  
 being first duly sworn according to law depose and say that they are experienced in the work of  
 plugging and filling oil and gas wells and were employed by \_\_\_\_\_  
 well operator, and participated in the work of plugging and filling the above well, that said work  
 was commenced on the \_\_\_\_\_ day of \_\_\_\_\_, 19\_\_\_\_, and that the well was plugged  
 and filled in the following manner:

DEPTH IN FEET	PLUGGING MATERIAL	PLUGGING USED	CLASSES
0-10	...	...	...
10-20	...	...	...
20-30	...	...	...
30-40	...	...	...
40-50	...	...	...
50-60	...	...	...
60-70	...	...	...
70-80	...	...	...
80-90	...	...	...
90-100	...	...	...
100-110	...	...	...
110-120	...	...	...
120-130	...	...	...
130-140	...	...	...
140-150	...	...	...
150-160	...	...	...
160-170	...	...	...
170-180	...	...	...
180-190	...	...	...
190-200	...	...	...
200-210	...	...	...
210-220	...	...	...
220-230	...	...	...
230-240	...	...	...
240-250	...	...	...
250-260	...	...	...
260-270	...	...	...
270-280	...	...	...
280-290	...	...	...
290-300	...	...	...
300-310	...	...	...
310-320	...	...	...
320-330	...	...	...
330-340	...	...	...
340-350	...	...	...
350-360	...	...	...
360-370	...	...	...
370-380	...	...	...
380-390	...	...	...
390-400	...	...	...
400-410	...	...	...
410-420	...	...	...
420-430	...	...	...
430-440	...	...	...
440-450	...	...	...
450-460	...	...	...
460-470	...	...	...
470-480	...	...	...
480-490	...	...	...
490-500	...	...	...
500-510	...	...	...
510-520	...	...	...
520-530	...	...	...
530-540	...	...	...
540-550	...	...	...
550-560	...	...	...
560-570	...	...	...
570-580	...	...	...
580-590	...	...	...
590-600	...	...	...
600-610	...	...	...
610-620	...	...	...
620-630	...	...	...
630-640	...	...	...
640-650	...	...	...
650-660	...	...	...
660-670	...	...	...
670-680	...	...	...
680-690	...	...	...
690-700	...	...	...
700-710	...	...	...
710-720	...	...	...
720-730	...	...	...
730-740	...	...	...
740-750	...	...	...
750-760	...	...	...
760-770	...	...	...
770-780	...	...	...
780-790	...	...	...
790-800	...	...	...
800-810	...	...	...
810-820	...	...	...
820-830	...	...	...
830-840	...	...	...
840-850	...	...	...
850-860	...	...	...
860-870	...	...	...
870-880	...	...	...
880-890	...	...	...
890-900	...	...	...
900-910	...	...	...
910-920	...	...	...
920-930	...	...	...
930-940	...	...	...
940-950	...	...	...
950-960	...	...	...
960-970	...	...	...
970-980	...	...	...
980-990	...	...	...
990-1000	...	...	...

and that the work of plugging and filling said well was completed on the \_\_\_\_\_ day of \_\_\_\_\_, 19\_\_\_\_.

And further: Aponents saith not.

Sworn to and subscribed before me this \_\_\_\_\_ day of \_\_\_\_\_, 19\_\_\_\_.

\_\_\_\_\_ day of \_\_\_\_\_, 19\_\_\_\_.

**WELL RECORDED**

Company **W. D. ...**  
 Address **West Union, W. Va.**  
 Farm **M. & S. Shifts**  
 Location (waters) **Atlantic**  
 Well No. **H.M. Gas**  
 District **Centre**  
 The surface of tract is owned in fee by **W. D. ...**  
 West Union, W. Va. Address \_\_\_\_\_  
 Mineral rights are owned by \_\_\_\_\_

Drilling commenced \_\_\_\_\_  
 Drilling completed \_\_\_\_\_  
 Date Shot \_\_\_\_\_ From \_\_\_\_\_

With \_\_\_\_\_  
 Open Flow 10ths Water in \_\_\_\_\_  
 10ths Merc. in \_\_\_\_\_

Volume \_\_\_\_\_  
 Rock Pressure \_\_\_\_\_ lbs.  
 Oil \_\_\_\_\_

**WELL ACIDIZED**  
**WELL FRACTURED**  
**RESULT AFTER TREATMENT**  
**ROCK PRESSURE AFTER TREATMENT**  
 Fresh Water \_\_\_\_\_ Feet

Formation	Color	Top	Bottom	Thickness of Water	Depth	Remarks
Pittsburgh Coal						
Durward Sand						
SALT SAND						
Maxon Sand						
BIG INJUN						
Gantz						
Gordon Stray						
Gordon						
Total Depth						

See 943-46  
 Re 2032-30