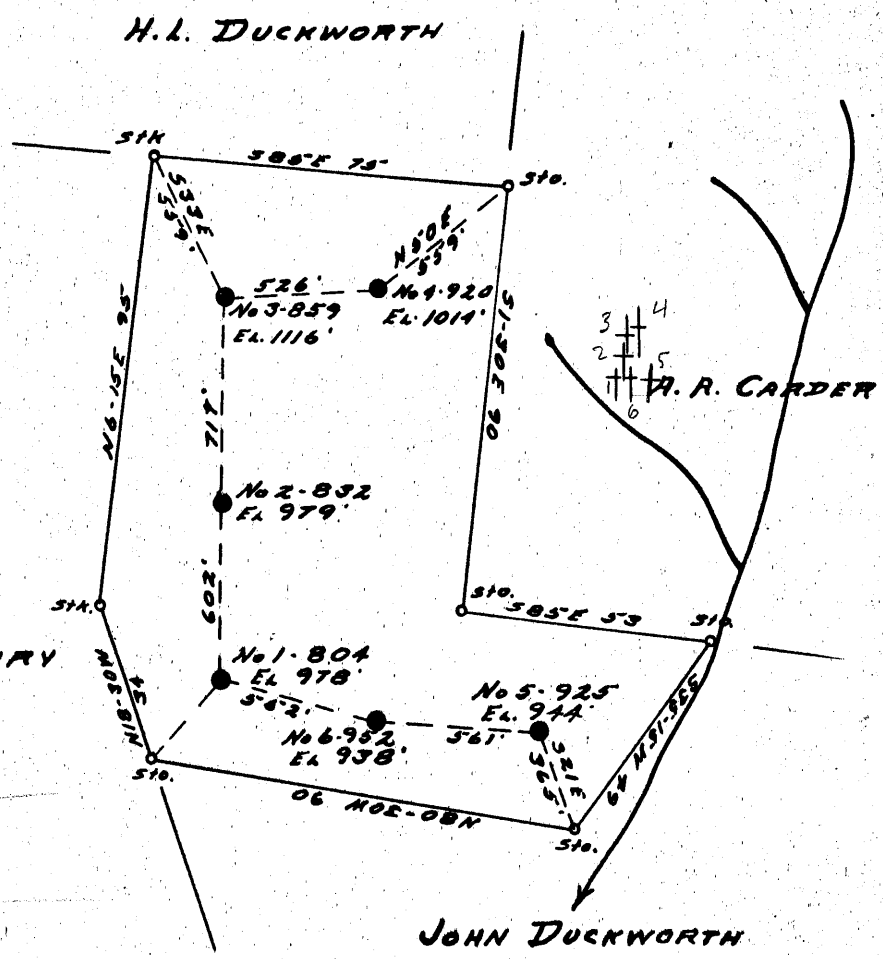


Latitude 39° 20'

Longitude 80° 50'



HIRAM HENRY

1	804	3.75S	2.50W
2	832	3.63S	2.44W
3	859	3.53S	2.43W
4	920	3.49S	2.37W
5	925	3.77S	2.32W
6	952	3.74S	2.40W

JOHN DUCKWORTH

- DOD-974-A - #804
- DOD-975-A - #832
- DOD-976-A - #859
- DOD-977-A - #920
- DOD-978-A - #925
- DOD-979-A - #952

New Location..   
 Drill Deeper.....   
 Abandonment.....

Company WEINER BROTHERS  
 Address 1908 CLARK BLDG. PITT. PA.  
 Farm KATE BRANNON HRS  
 Tract \_\_\_\_\_ Acres 66 Lease No. \_\_\_\_\_  
 Well (Farm) No. ALL WELLS Serial No. \_\_\_\_\_  
 Elevation (Spirit Level) AS SHOWN  
 Quadrangle WEST UNION SW B SE.  
 County DODDRIDGE District CENTRAL  
 Engineer R. L. Sweeney  
 Engineer's Registration No. \_\_\_\_\_  
 File No. \_\_\_\_\_ Drawing No. \_\_\_\_\_  
 Date 11-25-52 Scale 1" = 40 FEET

STATE OF WEST VIRGINIA  
 DEPARTMENT OF MINES  
 OIL AND GAS DIVISION  
 CHARLESTON

**WELL LOCATION MAP**  
 FILE NO. See ABOVE

+ Denotes location of well on United States Topographic Maps, scale 1 to 62,500, latitude and longitude lines being represented by border lines as shown.  
 - Denotes one inch spaces on border line of original tracing.



STATE OF WEST VIRGINIA  
DEPARTMENT OF MINES  
OIL AND GAS DIVISION

903

WELL RECORD

Permit No. 977-A

Oil or Gas Well \_\_\_\_\_ (KIND)

Company Weiner Brothers  
 Address 1908 Clark Bldg., Pittsburgh, Pa.  
 Farm Thomas Bra non Hrs. 71 Acres  
 Location (waters) \_\_\_\_\_  
 Well No. 920  
 District Central County Doddridge Elev. 1014  
 The surface of tract is owned in fee by \_\_\_\_\_  
 Address \_\_\_\_\_  
 Mineral rights are owned by \_\_\_\_\_  
 Address \_\_\_\_\_  
 Drilling commenced June 7, 1919  
 Drilling completed July 5, 1919  
 Date Shot From \_\_\_\_\_ To \_\_\_\_\_  
 With \_\_\_\_\_  
 Open Flow /10ths Water in \_\_\_\_\_ Inch  
 /10ths Merc. in \_\_\_\_\_ Inch  
 Volume \_\_\_\_\_ Cu. Ft.  
 Rock Pressure \_\_\_\_\_ lbs. \_\_\_\_\_ hrs.  
 Oil \_\_\_\_\_ bbls., 1st 24 hrs.  
 Fresh water \_\_\_\_\_ feet \_\_\_\_\_ feet  
 Salt water \_\_\_\_\_ feet \_\_\_\_\_ feet

Casing and Tubing	Used in Drilling	Left in Well	Packers
Size			
16			Kind of Packer _____
13			
10			Size of _____
8 1/4	<u>1918</u>	<u>1918</u>	
6 3/8	<u>1943</u>	<u>1943</u>	Depth set _____
5 3/16			
3			Perf. top _____
2	<u>2041</u>	<u>2041</u>	Perf. bottom _____
Liners Used			Perf. top _____
			Perf. bottom _____

CASING CEMENTED \_\_\_\_\_ SIZE \_\_\_\_\_ No. Ft. \_\_\_\_\_ Date \_\_\_\_\_  
 COAL WAS ENCOUNTERED AT \_\_\_\_\_ FEET \_\_\_\_\_ INCHES  
 \_\_\_\_\_ FEET \_\_\_\_\_ INCHES FEET \_\_\_\_\_ INCHES  
 \_\_\_\_\_ FEET \_\_\_\_\_ INCHES FEET \_\_\_\_\_ INCHES

Formation	Color	Hard or Soft	Top	Bottom	Oil, Gas or Water	Depth Found	Remarks
Pittsburgh Coal			685	686			
Little Dunkard			1000	1040			
Big Dunkard			1110	1120			
Gas Sand			1170	1215			
1st Salt Sand			1420	1490			
2nd Salt Sand			1495	1525			
Maxton Sand			1795	1860			
Little Lime			1888	1893			
Pencil Cave			1893	1903			
Big Lime			1903	1976			
Big Injun			1976				
Total Depth				2041			
					Gas show 1805-12		
					Gas 1980-4		
					Oil 2018-28' - shot		