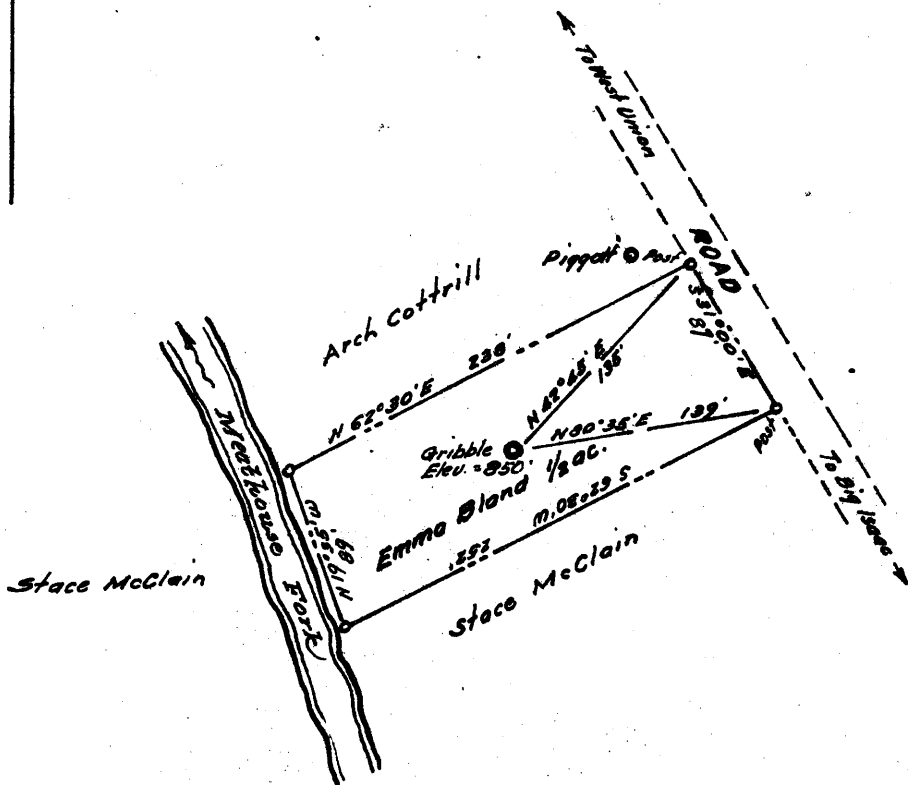


Latitude 39 ° 15' 1

Longitude 80 ° 40'

+  
1.305  
0.90W



New Location...   
 Drill Deeper.....   
 Abandonment.....

Lot in village of New Milton

Company W. D. GRIBBLE  
 Address West Union, W. Va.  
 Farm Emma Bland Lot  
 Tract Acres 0.50 Lease No. \_\_\_\_\_  
 Well (Farm) No. one Serial No. \_\_\_\_\_  
 Elevation (Spirit Level) 850'  
 Quadrangle Yadis  
 County Doddridge District New Milton  
 Engineer W. D. Gribble  
 Engineer's Registration No. 1227  
 File No. \_\_\_\_\_ Drawing No. \_\_\_\_\_  
 Date July, 1948 Scale 1" = 100'

STATE OF WEST VIRGINIA  
 DEPARTMENT OF MINES  
 OIL AND GAS DIVISION  
 CHARLESTON

WELL LOCATION MAP  
 FILE NO. DOD-981-A

+ Denotes location of well on United States Topographic Maps, scale 1 to 62,500, latitude and longitude lines being represented by border lines as shown.

- Denotes one inch spaces on border line of original tracing.