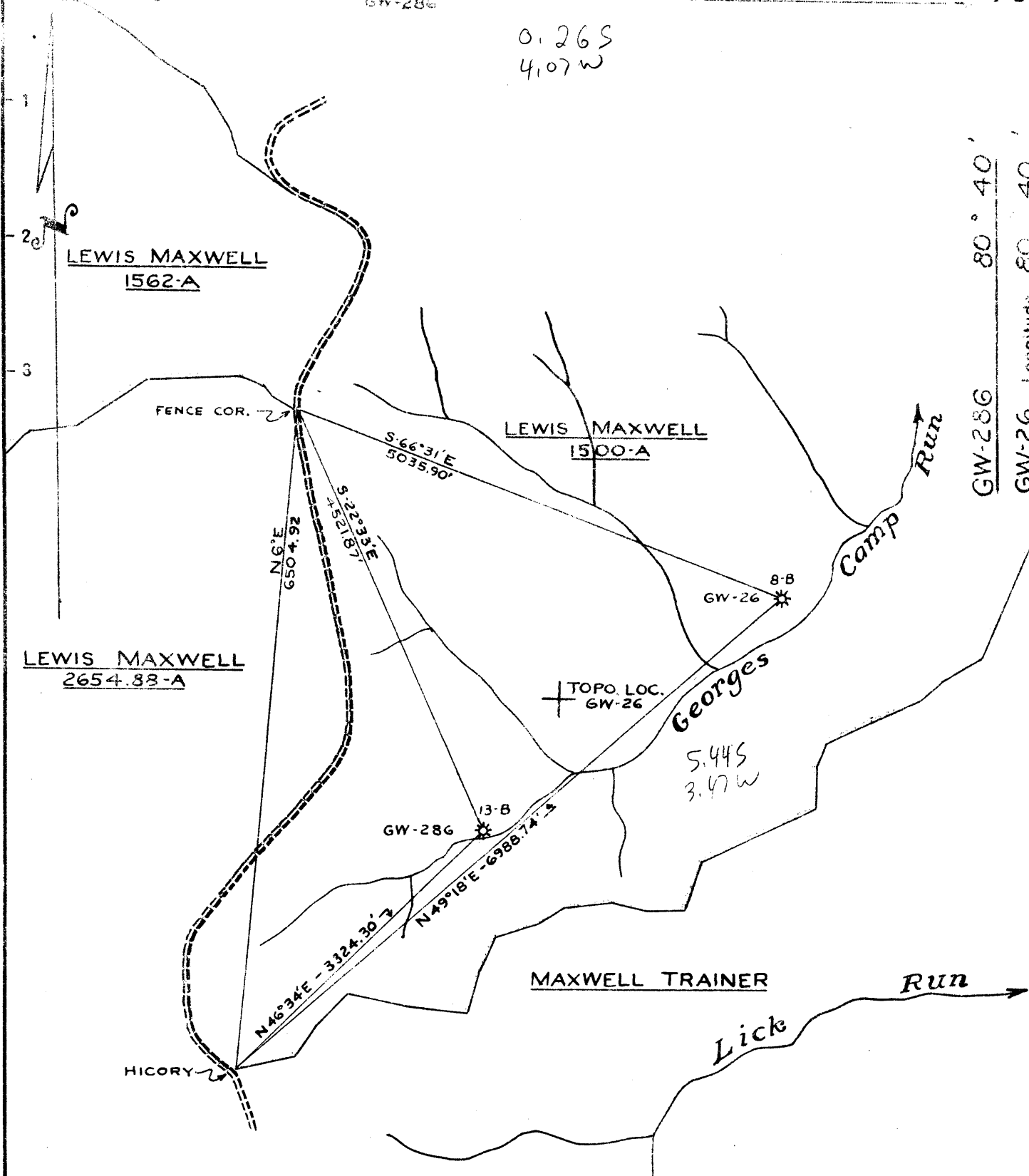


GW-26 Latitude 39° 20'
 GW-286 " 39° 15'

TOPO. LOC.
 GW-286

0.26 S
 4.07 W

80° 40'
 Longitude 80° 40'



New Location
 Drill Deeper
 Abandonment

GW-26 S-5.59" W-3.50"
 GW-286 S-0.25" W-4.11"

Company Columbian Carbon Co.
 Address Box 873-Charleston, W. Va.
 Farm Lewis Maxwell
 Tract _____ Acres 1500 Lease No. C-32-B
 Well (Farm) No. 13-B Serial No. GW-286
 Elevation (Spirit Level) GW-26 844'
GW-286 938'
 Quadrangle GW-286 Vadis 9-SW
3-NW
 County Doddridge District New Milton
 Engineer _____
 Engineer's Registration No. _____
 File No. _____ Drawing No. _____
 Date Sept. 27, 1952 Scale 1" = 1320'

STATE OF WEST VIRGINIA
 DEPARTMENT OF MINES
 OIL AND GAS DIVISION
 CHARLESTON

WELL LOCATION MAP

FILE NO. DOD-984-A-#GW-26

DOD-986-A-#GW-286

+ Denotes location of well on United States Topographic Maps, scale 1 to 62,500, latitude and longitude lines being represented by border lines as shown.

- Denotes one inch spaces on border line of original tracing.



STATE OF WEST VIRGINIA
DEPARTMENT OF MINES
OIL AND GAS DIVISION

917

WELL RECORD

Permit No.

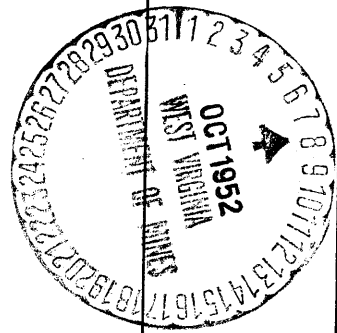
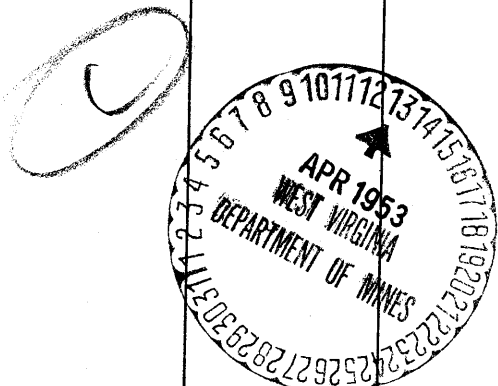
Oil or Gas Well gas
(KIND)

Company Columbian Carbon Company
Address Box 873, Charleston 23, W. Va.
Farm Lewis Maxwell Acres 80
Location (waters) George Camp Run
Well No. 13-B, GW-286 Elev. 938
District West Union County Doddridge
The surface of tract is owned in fee by Lewis Maxwell
Address
Mineral rights are owned by
Address
Drilling commenced 7-5-28
Drilling completed 8-17-28
Date Shot not shot From To
With
Open Flow /10ths Water in Inch
 /10ths Merc. in Inch
Volume 67,392 Cu. Ft.
Rock Pressure lbs. hrs.
Oil bbls., 1st 24 hrs.
Fresh water 398' feet feet
Salt water feet feet

Casing and Tubing	Used in Drilling	Left in Well	Packers
Size conductor 16"	16'	16'	Kind of Packer <u>3x6-5 anchor packer</u>
18"			Size of <u> </u>
10"	232'	pulled	Depth set <u>1949'6"</u>
8 1/4"	871'1"	pulled	Perf. top <u> </u>
6 5/8"	1654'5"	41'1"	Perf. bottom <u> </u>
5 3/16"			Perf. top <u> </u>
3" <u>170'</u>	2331'	2331'	Perf. bottom <u> </u>
2"			
Liners Used			

CASING CEMENTED	SIZE	No. Ft.	Date
COAL WAS ENCOUNTERED AT		FEET	INCHES
	FEET	INCHES	FEET
	FEET	INCHES	FEET

Formation	Color	Hard or Soft	Top	Bottom	Oil, Gas or Water	Depth Found	Remarks
Soil and red rock			0	55			
Hurry Up Sand			55	100			
Slate			100	112			
Sand			112	135			
Slate			135	150			
Red Rock			150	160			
Lime			160	210			
Slate			210	226			
Lime			226	246			
Slate			246	284			
Lime			284	320			
Red Rock			320	330			
Lime			330	355			
Slate			355	365			
Red Rock			365	395			
Sand			395	405	F. water	398'	1 blr/hr.
Red Rock			405	456			
Slate			456	478			
Lime			478	560			
Red Rock			560	575			
Lime			575	645			
Slate & Shells			645	700			
Shale			700	720			
Lime			720	730			
Slate			730	745			
Little Dunkard Sand			745	780			
Slate			780	790			
Lime			790	825			
Slate			825	835			
Broken Lime Stone			835	850			
Big Dunkard Sand			850	900			
Slate			900	915			
Lime			915	925			
Gas Sand			925	970	Gas	925-970'	show
Shale			970	995			
Sand			995	1020			
Slate			1020	1042			
Lime			1042	1075			
Black Slate			1075	1082			



Formation	Color	Hard or Soft	Top	Bottom	Oil, Gas or Water	Depth Found	Remarks
First Salt Sand			1082	1155			
Slate			1155	1179			
Lime			1179	1215			
Slate			1215	1287			
2nd Salt Sand			1287	1336			
Shale			1336	1435			
Red Rock			1435	1467			
Slate			1467	1496			
Lime			1496	1505			
Slate			1505	1525			
Slate			1525	1535			
Little Lime			1535	1547			
Slate			1547	1549			
Blue Monday Sand			1549	1586	Gas	1586'	small show
Break			1586	1590			
Big Lime			1590	1655	Gas	1663'	6/10 W. 2" 103M
Big Injun Sand			1655	1730	gas	1695-97'	"
Pink Rock			1730	1735			
Slate & Shells			1735	1875			
Gantz Sand			1875	2000	gas	1890-92'	show
Slate			2000	2058			
Lime			2058	2100			
Slate			2100	2135			
50 ft. Sand			2135	2190			
Slate			2190	2210			
30 ft. Sand			2210	2240			
Slate & Shells			2240	2289			
Gordon Stray Sand			2289	2303	Gas	2295-98'	show
Slate & Shells			2303	2525			

Total depth - - - - 2525'
Hole filled to 2318'

Date _____, 19____

APPROVED _____, Owner

By _____ (Title)