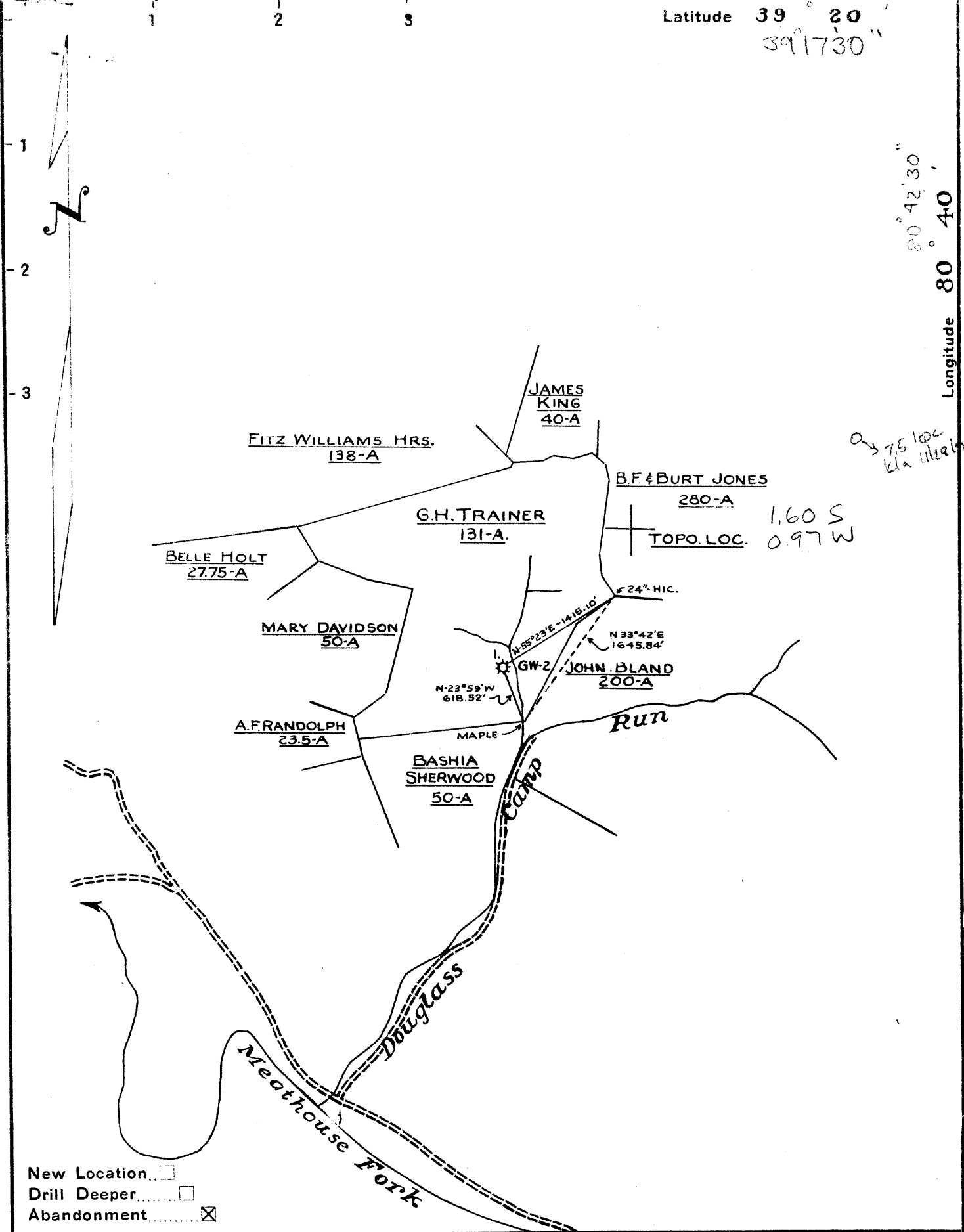
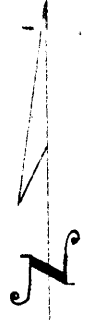


Latitude 39° 20' 39.1730"

Longitude 80° 42' 30" 80° 40'



1.60 S  
0.97 W

Q-75 loc  
Kla 11/2/50

- New Location
- Drill Deeper
- Abandonment

STATE OF WEST VIRGINIA  
DEPARTMENT OF MINES  
OIL AND GAS DIVISION  
CHARLESTON

**WELL LOCATION MAP**  
FILE NO. DOD-988-A

+ Denotes location of well on United States Topographic Maps, scale 1 to 62,500, latitude and longitude lines being represented by border lines as shown.

- Denotes one inch spaces on border line of original tracing.

Company Columbian Carbon Co.  
 Address Box 873 Charleston, W. Va.  
 Farm G.H. Trainer  
 Tract 131 Acres 131 Lease No. C-43  
 Well (Farm) No. 1 Serial No. GW-2  
 Elevation (Spirit Level) 931' Smithburg 7.8' loc  
 Quadrangle Centerpoint 9-SW S-4.26"  
W-2.58"  
 County Doddridge District New Milton  
 Engineer R. K. [unclear]  
 Engineer's Registration No. \_\_\_\_\_  
 File No. \_\_\_\_\_ Drawing No. \_\_\_\_\_  
 Date Sept 9, 1952 Scale 1"=1320'



STATE OF WEST VIRGINIA  
DEPARTMENT OF MINES  
OIL AND GAS DIVISION

WELL RECORD

972

Permit No. 988A

~~Oil or Gas Well~~ (KIND)

Company Columbian Carbon Company  
 Address Box 873, Charleston 23, W. Va.  
 Farm Trainer Heirs Acres 1.51  
 Location (waters) \_\_\_\_\_  
 Well No. GW-2 - Well No. 1 Elev. 931'  
 District West Union County Doddridge  
 The surface of tract is owned in fee by Trainer Heirs  
 Address \_\_\_\_\_  
 Mineral rights are owned by \_\_\_\_\_  
 Address \_\_\_\_\_  
 Drilling commenced \_\_\_\_\_  
 Drilling completed \_\_\_\_\_  
 Date Shot \_\_\_\_\_ From \_\_\_\_\_ To \_\_\_\_\_  
 With \_\_\_\_\_  
 Open Flow \_\_\_\_\_ /10ths Water in \_\_\_\_\_ Inch  
 \_\_\_\_\_ /10ths Merc. in \_\_\_\_\_ Inch  
 Volume \_\_\_\_\_ Cu. Ft.  
 Rock Pressure \_\_\_\_\_ lbs. \_\_\_\_\_ hrs.  
 Oil \_\_\_\_\_ bbls., 1st 24 hrs.  
 Fresh water \_\_\_\_\_ feet \_\_\_\_\_ feet  
 Salt water \_\_\_\_\_ feet \_\_\_\_\_ feet

Casing and Tubing	Used in Drilling	Left in Well	Packers
Size conductor	16'	16'	Kind of Packer
16			
13			
10"	190'	pulled	Size of
8 1/4"	852'	pulled	
6 5/8"	1554'	pulled	Depth set
5 3/16			
3			Perf. top
2" tubing left in well			Perf. bottom
Liners Used			Perf. top
			Perf. bottom

CASING CEMENTED \_\_\_\_\_ SIZE \_\_\_\_\_ No. Ft. \_\_\_\_\_ Date \_\_\_\_\_  
 COAL WAS ENCOUNTERED AT \_\_\_\_\_ FEET \_\_\_\_\_ INCHES  
 \_\_\_\_\_ FEET \_\_\_\_\_ INCHES FEET \_\_\_\_\_ INCHES  
 \_\_\_\_\_ FEET \_\_\_\_\_ INCHES FEET \_\_\_\_\_ INCHES

Formation	Color	Hard or Soft	Top	Bottom	Oil, Gas or Water	Depth Found	Remarks
Conductor			16'				
10" casing			190'				
Coal			249'				
Coal			429'				
Coal			580'				
8 1/4" casing			852'				
6-5/8" casing			1554'				
Big Injun			1650'	1708'			
Squaw Sand			1745'	1750			
Gordon Sand			2335'	2352'			
Slate			2350				
			Total depth - - - -	2480'			

