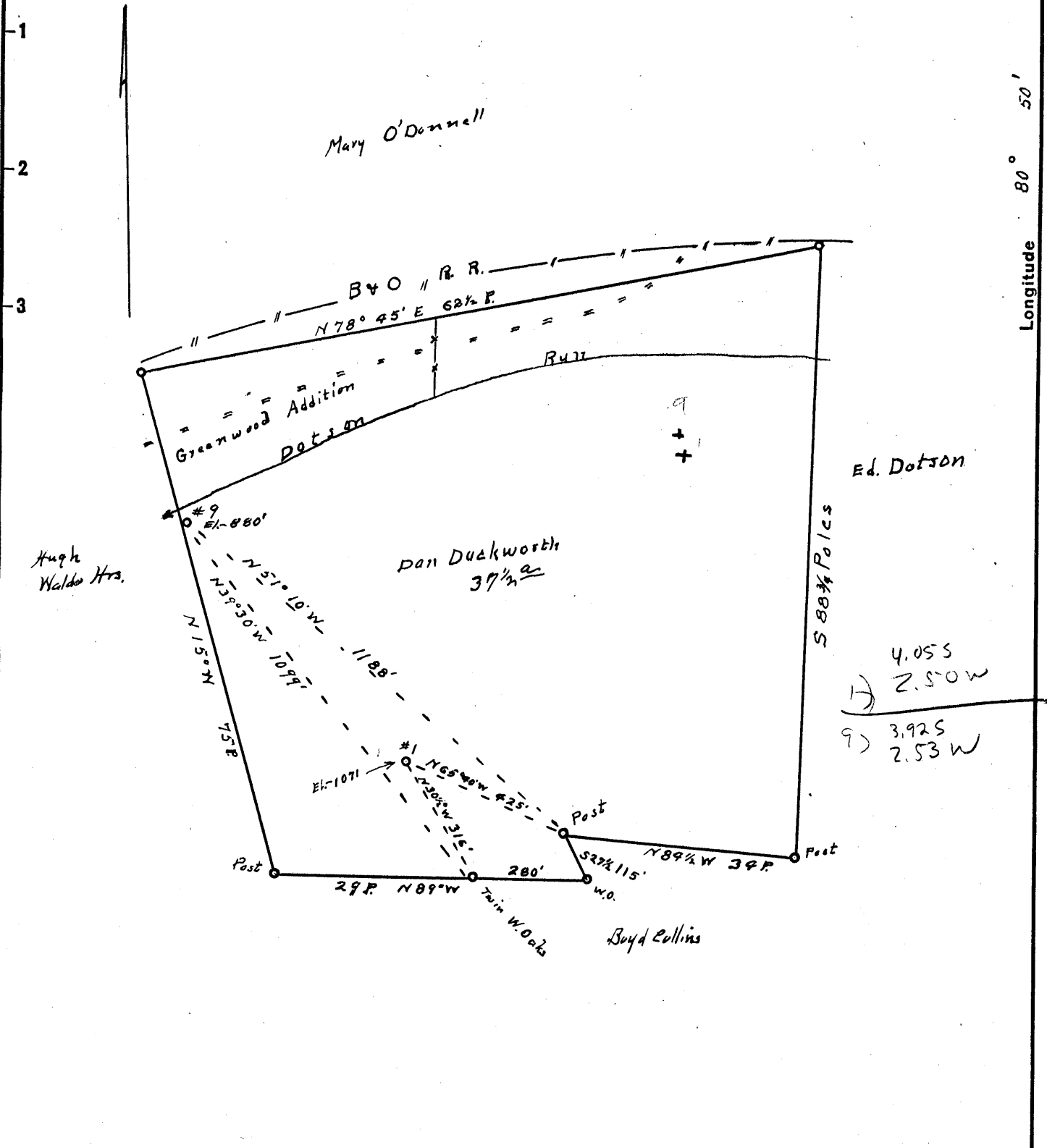


Latitude 39° 20'

Longitude 80° 50'



4.055  
 2.50 W  
 3.925  
 2.53 W

New Location..   
 Drill Deeper.....   
 Abandonment.....

Company Piersol, Smith, Feick & Kirkbride  
 Address R 2, Walker, W. Virginia  
 Farm Dan Duckworth  
 Tract \_\_\_\_\_ Acres 37 1/2 Lease No. \_\_\_\_\_  
 Well (Farm) No. 9 and 1 Serial No. \_\_\_\_\_  
 Elevation (Spirit Level) of #9, 880; of #1, 1071  
 Quadrangle West Union  
 County Poddridge District Central  
 Engineer Robert R. Anderson  
 Engineer's Registration No. 296  
 File No. \_\_\_\_\_ Drawing No. \_\_\_\_\_  
 Date Apr. 2 53 Scale 1 in = 20 Poles

STATE OF WEST VIRGINIA  
 DEPARTMENT OF MINES  
 OIL AND GAS DIVISION  
 CHARLESTON

WELL LOCATION MAP

FILE NO. DOD-985-A-#1  
DOD-995-A-#9

+ Denotes location of well on United States Topographic Maps, scale 1 to 62,500, latitude and longitude lines being represented by border lines as shown.

- Denotes one inch spaces on border line of original tracing.



STATE OF WEST VIRGINIA  
DEPARTMENT OF MINES  
OIL AND GAS DIVISION

935

WELL RECORD

Permit No. 995-A

Oil or Gas Well X (KIND)

Company Pierson, Smith, Feick & Kirkbride  
Address Walker, Rt. 2, W. VA  
Farm Daniel Duckworth Acres 37 1/2  
Location (waters) Hughes, River or Long, run  
Well No. 9. Elev. 880  
District Central County Madison  
The surface of tract is owned in fee by Geo. McCullough  
Glennville Address W. VA  
Mineral rights are owned by Daniel Duckworth  
Greenwood Address W. VA  
Drilling commenced \_\_\_\_\_  
Drilling completed 1919  
Date Shot \_\_\_\_\_ From \_\_\_\_\_ To \_\_\_\_\_  
With \_\_\_\_\_  
Open Flow \_\_\_\_\_ /10ths Water in \_\_\_\_\_ Inch  
\_\_\_\_\_ /10ths Merc. in \_\_\_\_\_ Inch  
Volume \_\_\_\_\_ Cu. Ft.  
Rock Pressure \_\_\_\_\_ lbs. \_\_\_\_\_ hrs.  
Oil \_\_\_\_\_ bbls., 1st 24 hrs.  
Fresh water \_\_\_\_\_ feet \_\_\_\_\_ feet  
Salt water \_\_\_\_\_ feet \_\_\_\_\_ feet

Casing and Tubing	Used in Drilling	Left in Well	Packers
Size			
16			Kind of Packer
13			
10	<u>480'</u>	<u>none</u>	Size of
8 1/4	<u>1840'</u>	<u>none</u>	
6 5/8	<u>1840'</u>	<u>1840'</u>	Depth set
5 3/16			
3			Perf. top
2	<u>1880'</u>	<u>1880'</u>	Perf. bottom
Liners Used			Perf. top
			Perf. bottom

CASING CEMENTED \_\_\_\_\_ SIZE \_\_\_\_\_ No. Ft. \_\_\_\_\_ Date \_\_\_\_\_

COAL WAS ENCOUNTERED AT \_\_\_\_\_ FEET \_\_\_\_\_ INCHES

\_\_\_\_\_ FEET \_\_\_\_\_ INCHES \_\_\_\_\_ FEET \_\_\_\_\_ INCHES

\_\_\_\_\_ FEET \_\_\_\_\_ INCHES \_\_\_\_\_ FEET \_\_\_\_\_ INCHES

Formation	Color	Hard or Soft	Top	Bottom	Oil, Gas or Water	Depth Found	Remarks
Clay	red	rock	000	685'			
big	red	save	685'	790'			
big	dark	slate & shale	1015'	1090'			
maxon	sand		1714'	1719'			
lime			1719'	1860'			
lime			1860'	1880'			
		total depth		1880'			



(Over)

OCT 1 1953

Formation	Color	Hard or Soft	Top	Bottom	Oil, Gas or Water	Depth Found	Remarks

Date 3-25, 1913

APPROVED Pierse, Smith, Fusk & Kerkhede, Owner

By G. R. Pierse  
(Title)