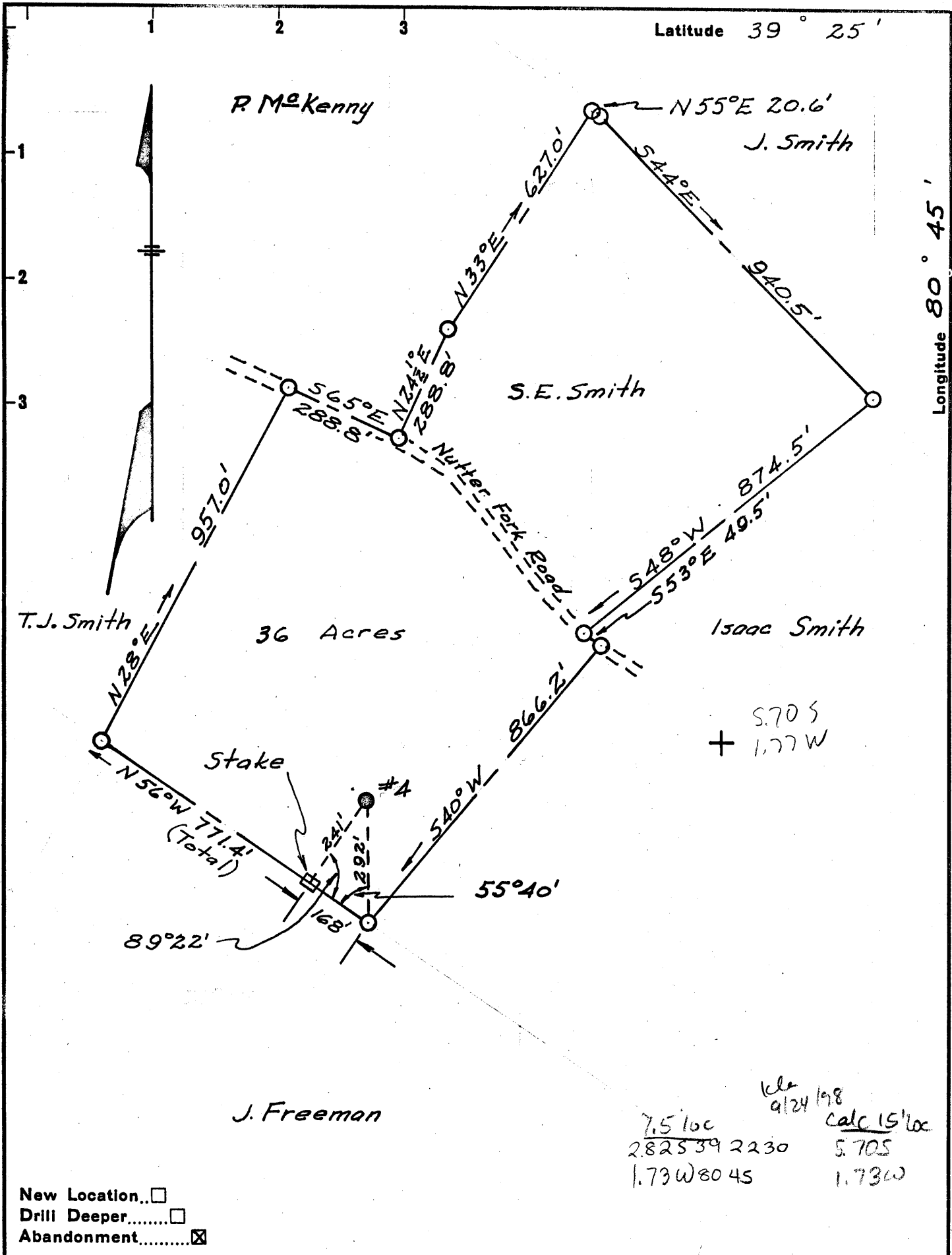


Latitude 39° 25'

Longitude 80° 45'



Company Quaker State Oil Refining Corp.
 Address P.O. Box 1789, Parkersburg, W. Va.
 Farm S.E. Smith
 Tract _____ Acres 36 Lease No. _____
 Well (Farm) No. 4 Serial No. _____
 Elevation (Spirit Level) 969.5
 Quadrangle West Union EC
 County Doddridge District West Union
 Engineer H.F. Johnston
 By M.E. Norman
 Engineer's Registration No. 2492
 File No. _____ Drawing No. _____
 Date March 24, 1958 Scale 1" = 300'

STATE OF WEST VIRGINIA
 DEPARTMENT OF MINES
 OIL AND GAS DIVISION
 CHARLESTON

WELL LOCATION MAP
 FILE NO. DOD-1082-A

+ Denotes location of well on United States Topographic Maps, scale 1 to 62,500, latitude and longitude lines being represented by border lines as shown.

- Denotes one inch spaces on border line of original tracing.

70239

West Union District, Doddridge County, W. Va.

By Clifton Oil & Gas Co.

Rigged up Feb. 20, 1925.

Drilling commenced Feb. 25, 1925; completed March 22, 1925.

Elevation... 967.5...

10" casing, 608' (pulled); 8", 1120'; 6", 1875'; 5", 108' 7".

Shot with 15 qts., May 7, 1925, at 1973-1989'.

204 bbls., 1st 24 hrs.; 160 bbls. on May 8th.

Shot Dec. 2, 1925, with 25 qts.

Shot June 20, 1927, with 40 qts., at 1973-1989'.

Shot July 15, 1929, with 220# gelatin, at 1973-1989'.

Cased Sept. 16, 1929.

Record in Eastern Petroleum Co. Well Record book of Clifton Oil & Gas Co.

	Top.	Bottom.
Native coal	147	- ...
Sand	525	- 508
Pittsburgh Coal	645	- ...
Shale	710	- 750
Big Red	855	- ...
Little Dunkard Sand	1116	- 1129
Shale	1157	- 1159
Big Dunkard Sand	1163	- 1192
First Salt Sand	1456	- 1600
Second Salt Sand	1625	- 1740
Red rock	1825	-
Hard line	1873	- 1877
Little line	1882	- 1890
Pencil Cave	1890	- 1894
Big line	1894	- 1955
Big Injun Sand (exp. 1970') (oil, 1973-1989')	1955	-
Total depth		1997

NOW 1082-A