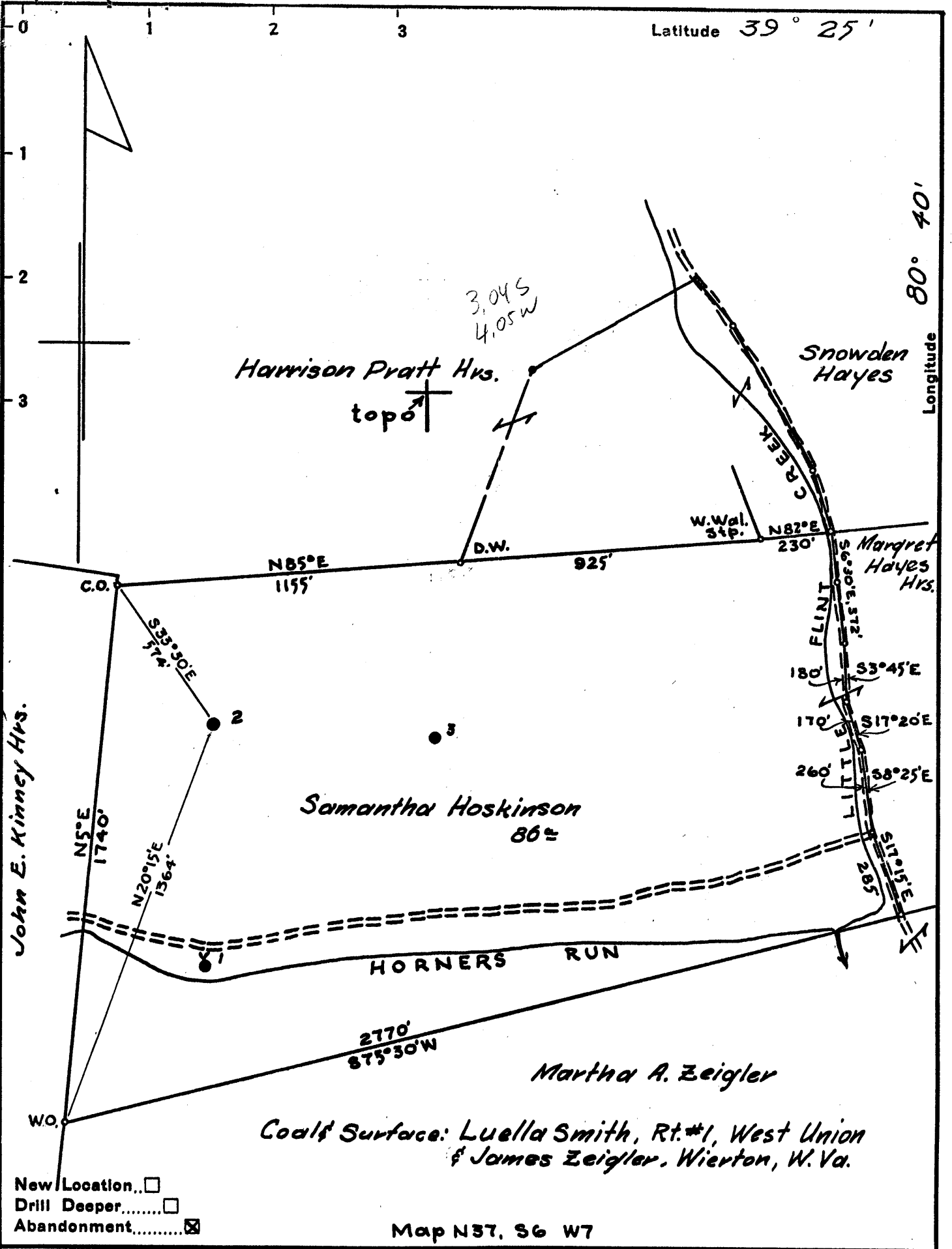


Latitude 39° 25'

Longitude 80° 40'



New Location...   
 Drill Deeper.....   
 Abandonment.....

Map N37, S6 W7

Company South Penn Natural Gas Co.  
 Address Parkersburg, W. Va.  
 Farm Samantha Hoskinson  
 Tract \_\_\_\_\_ Acres 86± Lease No. 10481  
 Well (Farm) No. 2 Serial No. \_\_\_\_\_  
 Elevation (Spirit Level) 1029 ground  
 Quadrangle Centerpoint  
 County Doddridge District Grant  
 Engineer A. E. Hillert  
 Engineer's Registrator No. 2534  
 File No. \_\_\_\_\_ Drawing No. \_\_\_\_\_  
 Date June 5, 1958 Scale 1" = 400'

STATE OF WEST VIRGINIA  
 DEPARTMENT OF MINES  
 OIL AND GAS DIVISION  
 CHARLESTON

### WELL LOCATION MAP

FILE NO. DOD-1089-B

*was 01772956*

+ Denotes location of well on United States Topographic Maps, scale 1 to 62,500, latitude and longitude lines being represented by border lines as shown.

- Denotes one inch spaces on border line of original tracing.

JDB



STATE OF WEST VIRGINIA  
DEPARTMENT OF MINES  
OIL AND GAS DIVISION

1040

Centerpoint Prod  
Permit No. Prod-1089-A

WELL RECORD

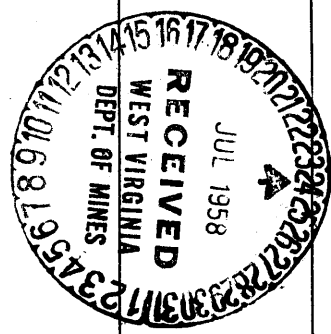
Oil or Gas Well  (KIND)

Company **SOUTH PENN NATURAL GAS COMPANY**  
 Address **P.O. Box 1280, Parkersburg, W. Va.**  
 Farm **Samantha Hoskinson** Acres **86**  
 Location (waters) **Horners Run**  
 Well No. **2** Elev. **1029**  
 District **Grant** County **Doddridge**  
 The surface of tract is owned in fee by **Luella Smith, James Zeigler, West Union** Address **W. Va.**  
 Mineral rights are owned by **Frank F. Leggett, et al.** Address **West Union, W. Va.**  
 Drilling commenced **8-1-98**  
 Drilling completed **9-10-98**  
 Date Shot **--** From **--** To **--**  
 With **--**  
 Open Flow /10ths Water in \_\_\_\_\_ Inch  
 /10ths Merc. in \_\_\_\_\_ Inch  
 Volume \_\_\_\_\_ Cu. Ft.  
 Rock Pressure \_\_\_\_\_ lbs. \_\_\_\_\_ hrs.  
 Oil \_\_\_\_\_ bbls., 1st 24 hrs.  
 Fresh water \_\_\_\_\_ feet \_\_\_\_\_ feet  
 Salt water \_\_\_\_\_ feet \_\_\_\_\_ feet

Casing and Tubing	Used in Drilling	Left in Well	Packers
Size			
16			Kind of Packer
13			
10			Size of
8 1/4	<b>1195</b>	<b>None</b>	
6%	<b>2018</b>	<b>2018</b>	Depth set
5 3/16			
3			Perf. top
2	<b>2175</b>	<b>2175</b>	Perf. bottom
Liners Used			Perf. top
			Perf. bottom

CASING CEMENTED \_\_\_\_\_ SIZE \_\_\_\_\_ No. Ft. \_\_\_\_\_ Date \_\_\_\_\_  
 COAL WAS ENCOUNTERED AT **717** FEET \_\_\_\_\_ INCHES  
 \_\_\_\_\_ FEET \_\_\_\_\_ INCHES FEET \_\_\_\_\_ INCHES  
 \_\_\_\_\_ FEET \_\_\_\_\_ INCHES FEET \_\_\_\_\_ INCHES

Formation	Color	Hard or Soft	Top	Bottom	Oil, Gas or Water	Depth Found	Remarks
<b>Pgh Coal</b>			<b>717</b>				
<b>Big Injun</b>			<b>2052</b>				
	<b>TOTAL</b>			<b>2187</b>	<b>Oil</b>	<b>2062</b>	



JUL 23 1959

