

Latitude 39° 20'

Longitude 80° 35'

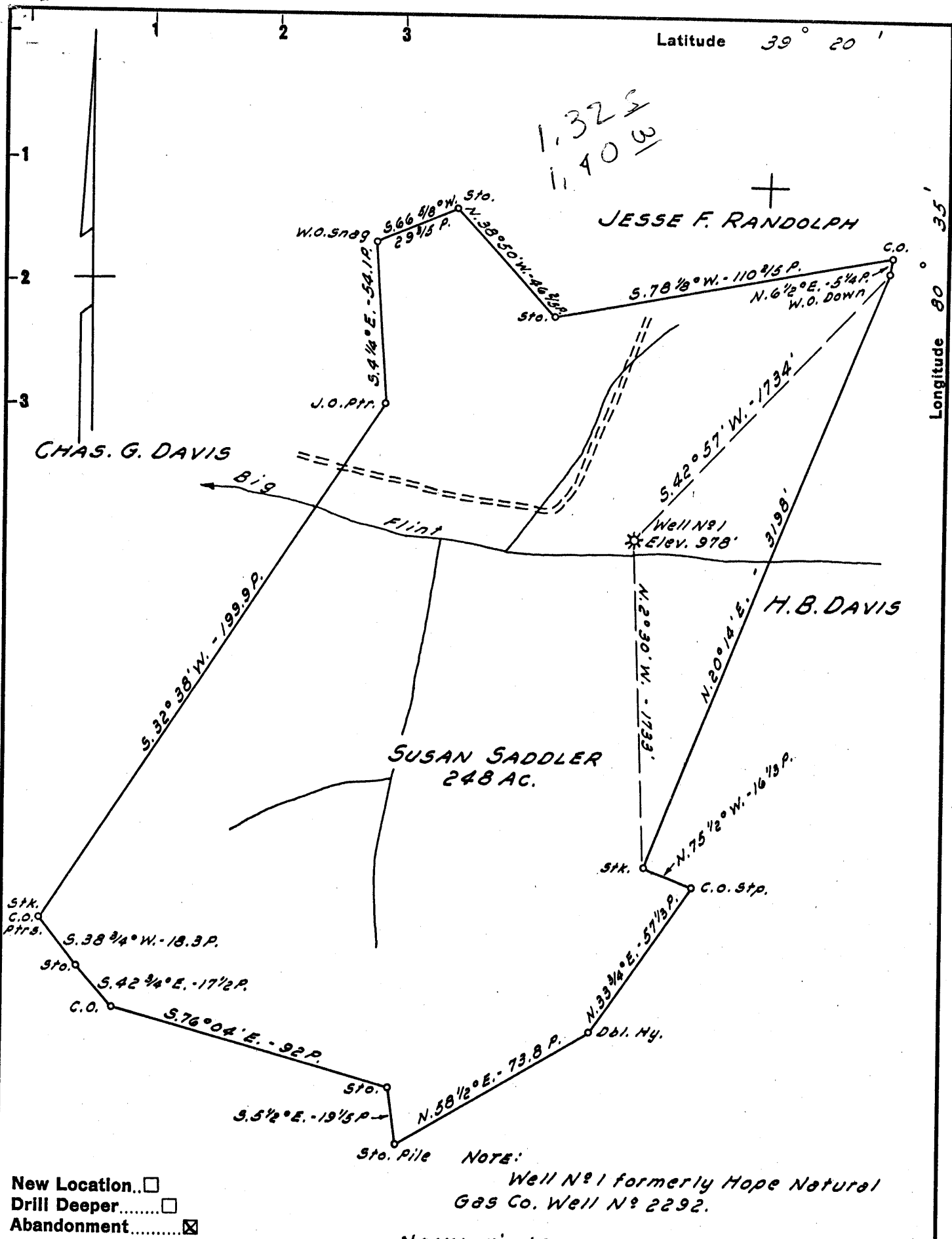
1,325  
1,400

JESSE F. RANDOLPH

CHAS. G. DAVIS

H. B. DAVIS

SUSAN SADDLER  
248 AC.



- New Location...
- Drill Deeper.....
- Abandonment.....

NOTE:  
Well No. 1 formerly Hope Natural Gas Co. Well No. 2292.

NOW: WILHELM AND JACKSON - HAMLIN, W. VA.

Company A. M. SNIDER  
 Address HUNDRED, W. VA.  
 Farm SUSAN SADDLER  
 Tract \_\_\_\_\_ Acres 248 Lease No. \_\_\_\_\_  
 Well (Farm) No. 1 Serial No. \_\_\_\_\_  
 Elevation (Spirit Level) 978'  
 Quadrangle CENTERPOINT SW  
 County DODDRIDGE District GRANT  
 Engineer JOHN W. HAMILTON  
 Engineer's Registration No. 2274  
 File No. \_\_\_\_\_ Drawing No. \_\_\_\_\_  
 Date Feb. 2, 1958 Scale 1" = 40 POLES

STATE OF WEST VIRGINIA  
 DEPARTMENT OF MINES  
 OIL AND GAS DIVISION  
 CHARLESTON

**WELL LOCATION MAP**  
 FILE NO. DOD-1092-R

+ Denotes location of well on United States Topographic Maps, scale 1 to 62,500, latitude and longitude lines being represented by border lines as shown.

- Denotes one inch spaces on border line of original tracing.



1032

STATE OF WEST VIRGINIA  
DEPARTMENT OF MINES  
OIL AND GAS DIVISION

WELL RECORD

Permit No. 1047A

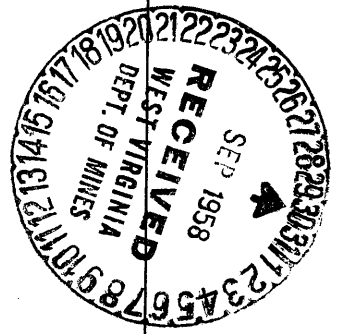
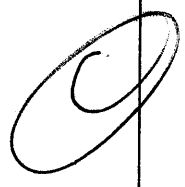
Oil or Gas Well (KIND)

Company Wilhelm & Jackson, Inc. (M. J. Smith)  
 Address Hamlin, W. Va.  
 Farm Susan Saddler Acres 248  
 Location (waters) Big Flint  
 Well No. 1 Elev. 978'  
 District Grant County Doddridge  
 The surface of tract is owned in fee by \_\_\_\_\_  
 Address \_\_\_\_\_  
 Mineral rights are owned by \_\_\_\_\_  
 Address \_\_\_\_\_  
 Drilling commenced August 3, 1911  
 Drilling completed \_\_\_\_\_  
 Date Shot From 50 To 120 fts.  
 With \_\_\_\_\_  
 Open Flow /10ths Water in \_\_\_\_\_ Inch  
 /10ths Merc. in \_\_\_\_\_ Inch  
 Volume \_\_\_\_\_ Cu. Ft.  
 Rock Pressure \_\_\_\_\_ lbs. \_\_\_\_\_ hrs.  
 Oil \_\_\_\_\_ bbls., 1st 24 hrs.  
 Fresh water No rec rd feet \_\_\_\_\_ feet  
 Salt water \_\_\_\_\_ feet \_\_\_\_\_ feet

Casing and Tubing	Used in Drilling	Left in Well	Packers
Size			Kind of Packer
16			
13			
10	124	124	Size of
8 1/4	1975	1975	Depth set
6 3/16	2521	2521	
3			Perf. top
2			Perf. bottom
Liners Used			Perf. top
			Perf. bottom

CASING CEMENTED \_\_\_\_\_ SIZE \_\_\_\_\_ No. Ft. \_\_\_\_\_ Date \_\_\_\_\_  
 COAL WAS ENCOUNTERED AT 745 FEET \_\_\_\_\_ INCHES  
 \_\_\_\_\_ FEET \_\_\_\_\_ INCHES FEET \_\_\_\_\_ INCHES  
 \_\_\_\_\_ FEET \_\_\_\_\_ INCHES FEET \_\_\_\_\_ INCHES

Formation	Color	Hard or Soft	Top	Bottom	Oil, Gas or Water	Depth Found	Remarks
Pitts. Coal			745	752			
Dunkard Sand			1270	1290			
1st. S. Sand			1490	1535			
2nd. S. Sand			1610	1685			
Maxon Sand			1936	2052			
Big Lime			2098	2152			
Injun Sand			2152	2164			
Berea Sand			2300	2360			
Gantz Sand			2383	2408			
Fifty Foot Sand			2512	2545			
Thirty Foot Sand			2723	2744			
Stray Sand			2798	2820			
Gordon Sand			2841	2853			
Total Depth				2875			



DEC 20 1958