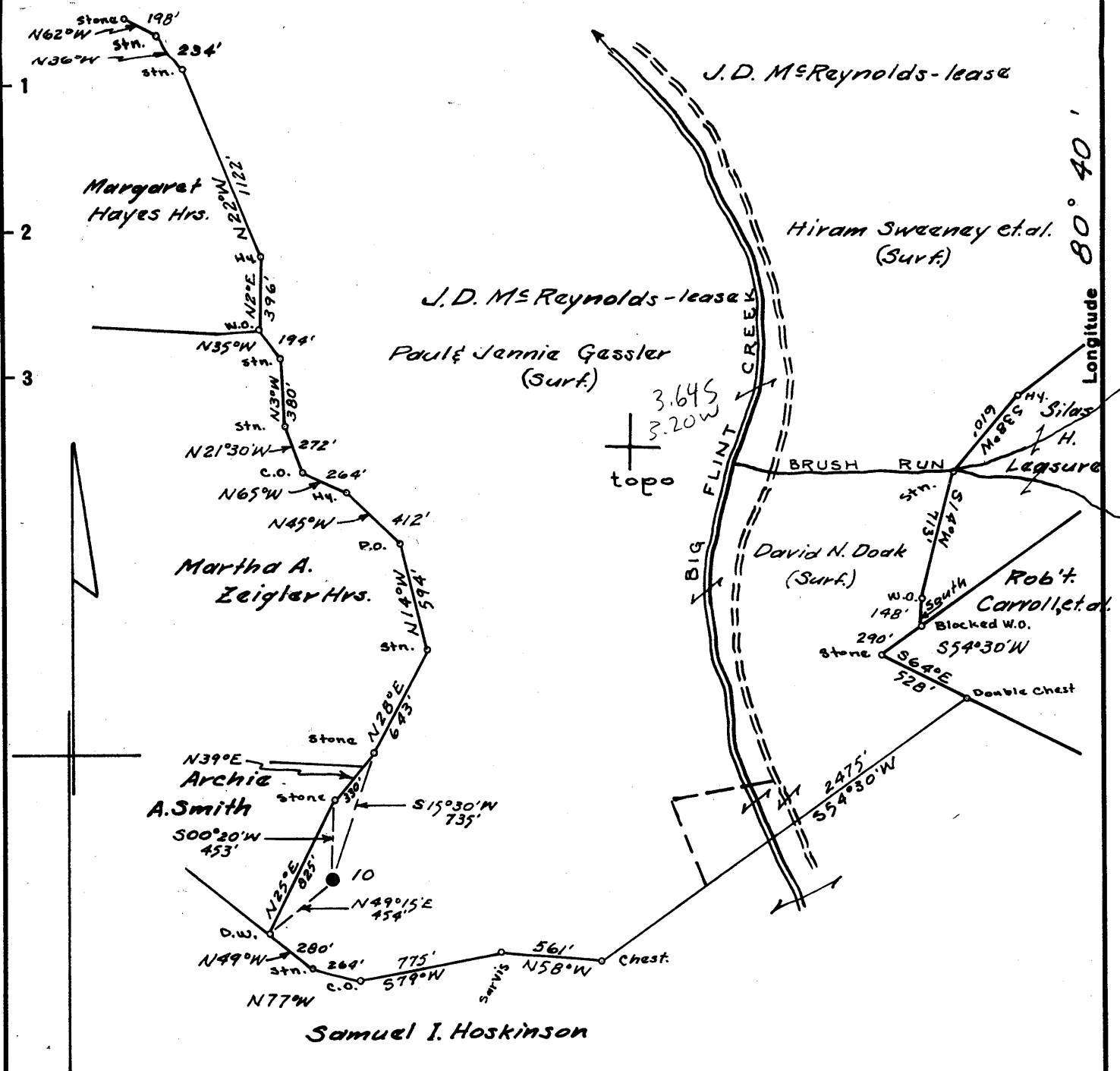


Latitude 39° 25'

Longitude 80° 40'



7.5' loc                      calc 15' loc  
 0.765392230              3.645  
 1.08W804230              3.31W  
 see 9/12/48

Surface owner: Paul & Jennie Gassler  
 9/0 Mr. Paul Gassler, Star Route,  
 West Union, W.Va.  
 Coal: No Commercial Coal, if any  
 belongs to Paul Gassler.

- New Location..
- Drill Deeper.....
- Abandonment.....

Map N37 S6 W6

Company South Penn Natural Gas Co.  
 Address Parkersburg, W.Va.  
 Farm J. D. McReynolds  
 Tract \_\_\_\_\_ Acres 1500 Lease No. 10480  
 Well (Farm) No. 10 Serial No. \_\_\_\_\_  
 Elevation (Spirit Level) 1088.27 floor  
 Quadrangle Centerpoint  
 County Doddridge District Grant  
 Engineer A. C. Hillert  
 Engineer's Registration No. 2534  
 File No. 1112 Drawing No. \_\_\_\_\_  
 Date May 20, 1959 Scale 1" = 800'

STATE OF WEST VIRGINIA  
 DEPARTMENT OF MINES  
 OIL AND GAS DIVISION  
 CHARLESTON

**WELL LOCATION MAP**  
 FILE NO. DOD-1098-A

- + Denotes location of well on United States Topographic Maps, scale 1 to 62,500, latitude and longitude lines being represented by border lines as shown.
- Denotes one inch spaces on border line of original tracing.



1091

STATE OF WEST VIRGINIA  
DEPARTMENT OF MINES  
OIL AND GAS DIVISION

WELL RECORD

Center point W.V.  
Permit No. 1098-A

Oil or Gas Well oil  
(KIND)

Company South Penna Natural Gas Company  
Address P. O. Box 1200, Parkersburg, West Virginia  
Farm John D. McReynolds Acres 1500  
Location (waters) Big Flint Creek  
Well No. 10 Elev. 1098.27  
District Grant County Doddridge  
The surface of tract is owned in fee by Paul Gessler, et al.  
Star Route Address West Union, W. Va.  
Mineral rights are owned by Union National Bank, Trustee  
for Lillian McReynolds Address Clarksburg, W. Va.  
Drilling commenced 11-2-94  
Drilling completed 12-12-94  
Date Shot 6 shots From \_\_\_\_\_ To \_\_\_\_\_  
With \_\_\_\_\_  
Open Flow \_\_\_\_\_ /10ths Water in \_\_\_\_\_ Inch  
\_\_\_\_\_ /10ths Merc. in \_\_\_\_\_ Inch  
Volume \_\_\_\_\_ Cu. Ft.  
Rock Pressure \_\_\_\_\_ lbs. \_\_\_\_\_ hrs.  
Oil \_\_\_\_\_ bbls., 1st 24 hrs.  
Fresh water \_\_\_\_\_ feet \_\_\_\_\_ feet  
Salt water \_\_\_\_\_ feet \_\_\_\_\_ feet

Casing and Tubing	Used in Drilling	Left in Well	Packers
Size			Kind of Packer
16			
13			
10-3/4	118	0	Size of
8-5/8	1264	0	
7	2098	2098	Depth set
5 3/16			
3			Perf. top
2			Perf. bottom
Liners Used			Perf. top
			Perf. bottom

CASING CEMENTED \_\_\_\_\_ SIZE \_\_\_\_\_ No. Ft. \_\_\_\_\_ Date \_\_\_\_\_  
COAL WAS ENCOUNTERED AT 765 FEET ? INCHES  
\_\_\_\_\_ FEET \_\_\_\_\_ INCHES FEET \_\_\_\_\_ INCHES  
\_\_\_\_\_ FEET \_\_\_\_\_ INCHES FEET ✓ INCHES

Formation	Color	Hard or Soft	Top	Bottom	Oil, Gas or Water	Depth Found	Remarks
<b>Pittsburgh Coal</b>			<b>765</b>				
<b>Big Injun</b>			<b>2105</b>				
<b>2nd Pay</b>			<b>2205</b>		<b>oil</b>	<b>2120</b>	<b>Black</b>
<b>TOTAL DEPTH</b>				<b>2232</b>			



JAN 3 1961

Formation	Color	Hard or Soft	Top	Bottom	Oil, Gas or Water	Depth Found	Remarks

Date May 13, 1959, 19\_\_

APPROVED SOUTH PENN NATURAL GAS COMPANY, Owner

By George W. Williams  
 George W. Williams (Title) Land Agent