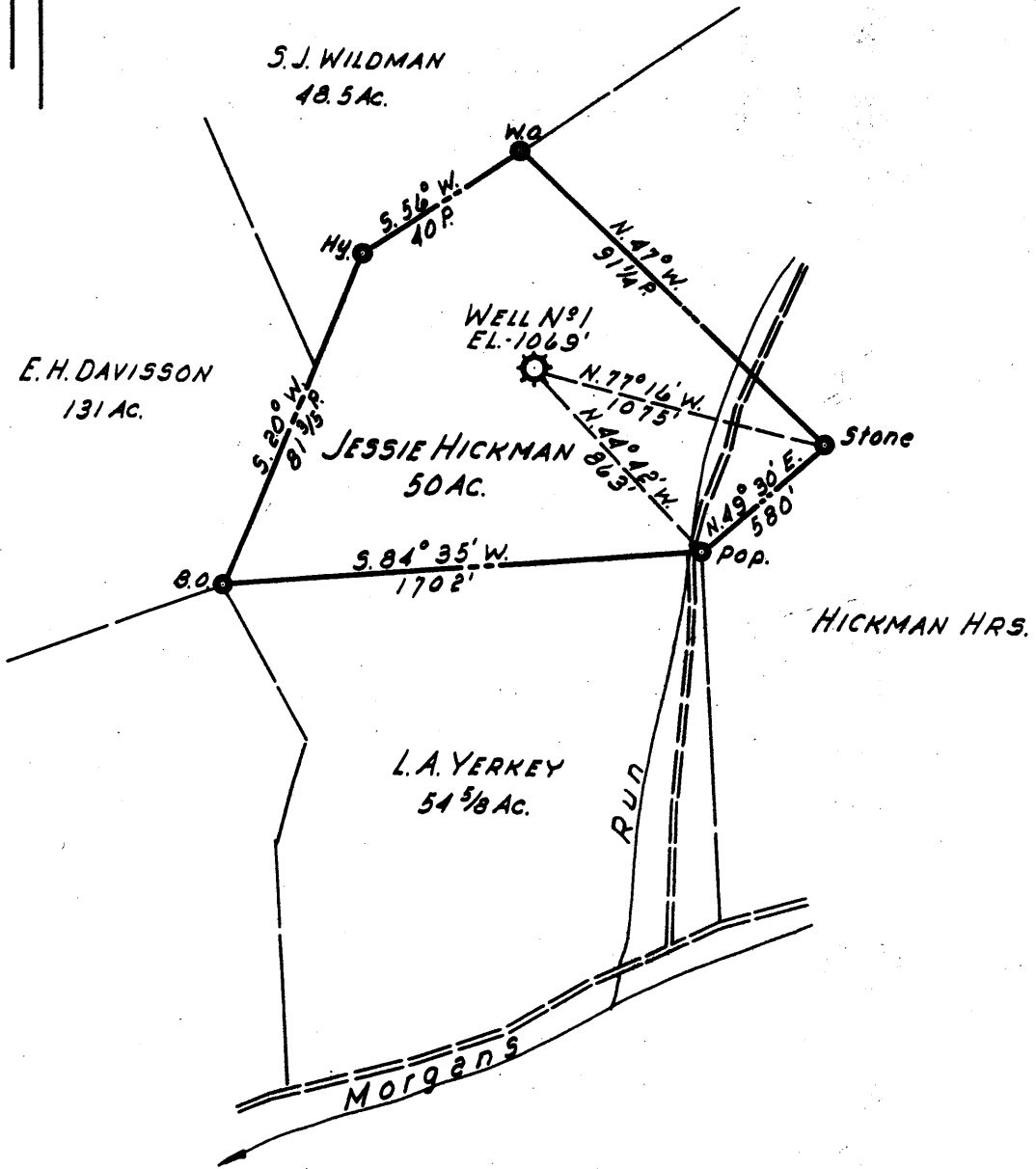


Latitude 39° 20'

Longitude 80° 40'



Well No. 1  
 1.865  
 0.67W

- New Location ..
- Drill Deeper .....
- Abandonment.....

Formerly Hope Natural Gas Co. Well No. 2327

Company LURAY LAND, INC.  
 Address POINT PLEASANT, WEST VA.  
 Farm JESSIE HICKMAN  
 Tract \_\_\_\_\_ Acres 50 Lease No. \_\_\_\_\_  
 Well (Farm) No. 1 Serial No. 2327  
 Elevation (Spirit Level) 1069'  
 Quadrangle CENTERPOINT  
 County DODDRIDGE District GRANT  
 Engineer H. P. SUTER  
 Engineer's Registration No. 1805  
 File No. \_\_\_\_\_ Drawing No. \_\_\_\_\_  
 Date 12 JUNE 1959 Scale 1" = 40 FEET

STATE OF WEST VIRGINIA  
 DEPARTMENT OF MINES  
 OIL AND GAS DIVISION  
 CHARLESTON

**WELL LOCATION MAP**  
 FILE NO. DOD-1119-A

+ Denotes location of well on United States Topographic Maps, scale 1 to 62,500, latitude and longitude lines being represented by border lines as shown.  
 - Denotes one inch spaces on border line of original tracing.



1064

STATE OF WEST VIRGINIA  
DEPARTMENT OF MINES  
OIL AND GAS DIVISION

Quadrangle Centerpoint  
Permit No. 119A

WELL RECORD

Oil or Gas Well \_\_\_\_\_ (KIND)

Company LaRay Land, Inc.  
Address Charleston, W. Va.  
Farm Jesse Hickman Acres 50

Location (waters) \_\_\_\_\_  
Well No. 2327 Elev. 1269'  
District Grant County Doddridge

The surface of tract is owned in fee by \_\_\_\_\_  
Address \_\_\_\_\_

Mineral rights are owned by \_\_\_\_\_  
Address \_\_\_\_\_

Drilling commenced 8/14/1911

Drilling completed 10/31/1911

Date Shot 3/7/40 From Injun To \_\_\_\_\_

With \_\_\_\_\_

Open Flow \_\_\_\_\_ /10ths Water in \_\_\_\_\_ Inch  
\_\_\_\_\_ /10ths Merc. in \_\_\_\_\_ Inch

Volume \_\_\_\_\_ Cu. Ft.

Rock Pressure \_\_\_\_\_ lbs. \_\_\_\_\_ hrs.

Oil \_\_\_\_\_ bbls., 1st 24 hrs.

WELL ACIDIZED \_\_\_\_\_

WELL FRACTURED \_\_\_\_\_

Casing and Tubing	Used in Drilling	Left in Well	Packers
Size			Kind of Packer
16			6 x 8 B.H. 1925'
13			
10	275'	- 0 -	Size of
8 1/4	1120'	1120'	Depth set
6 5/8	1942'	1942'	
5 3/16	1967'	1967'	
3			Perf. top
2			Perf. bottom
Liners Used			Perf. top
			Perf. bottom

CASING CEMENTED \_\_\_\_\_ SIZE \_\_\_\_\_ No. Ft. \_\_\_\_\_ Date \_\_\_\_\_

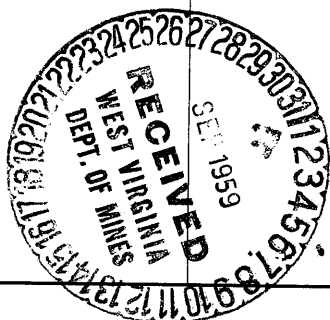
COAL WAS ENCOUNTERED AT 505 FEET \_\_\_\_\_ INCHES  
\_\_\_\_\_ FEET \_\_\_\_\_ INCHES FEET \_\_\_\_\_ INCHES  
\_\_\_\_\_ FEET \_\_\_\_\_ INCHES FEET \_\_\_\_\_ INCHES

RESULT AFTER TREATMENT \_\_\_\_\_

ROCK PRESSURE AFTER TREATMENT \_\_\_\_\_

Fresh Water \_\_\_\_\_ Feet Salt Water \_\_\_\_\_ Feet

Formation	Color	Hard or Soft	Top	Bottom	Oil, Gas or Water	Depth	Remarks
Pittsburgh Coal			505'	507'			
Dunkard Sand			898'	928'			
Salt Sand			1350'	1730'	1705'		
Maxen Sand			1755'	1800'	1788'		
Injun Sand			1925'	2023'	2010'		



MAR 26 1960

