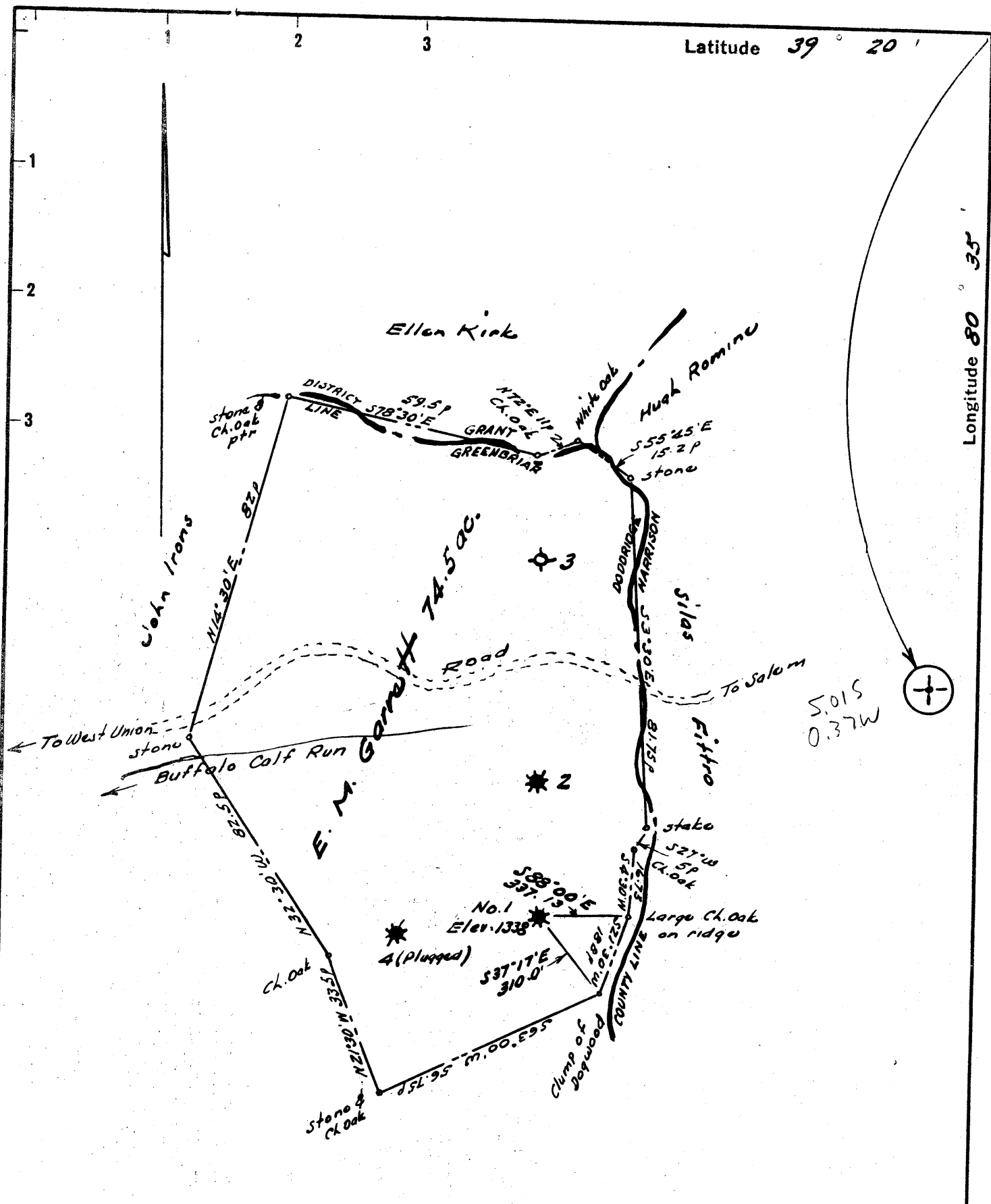


Latitude 39° 20'

Longitude 80° 35'



New Location
 Drill Deeper
 Abandonment

Company WILLIAM CASSADY
 Address 4303 Whitel Drive, Vienna, W. Va.
 Farm E. M. Garrett
 Tract _____ Acres 74.5 Lease No. _____
 Well (Farm) No. One Serial No. _____
 Elevation (Spirit Level) 1338
 Quadrangle Centerpoint
 County Doddridge District Greenbriar
 Engineer Nesbitt J.
 Engineer's Registration No. 1277
 File No. _____ Drawing No. _____
 Date January 1967 Scale 1" = 30p

STATE OF WEST VIRGINIA
 DEPARTMENT OF MINES
 OIL AND GAS DIVISION
 CHARLESTON

WELL LOCATION MAP
 FILE NO. Dod-1163-A

+ Denotes location of well on United States Topographic Maps, scale 1 to 62,500, latitude and longitude lines being represented by border lines as shown.

- Denotes one inch spaces on border line of original tracing.