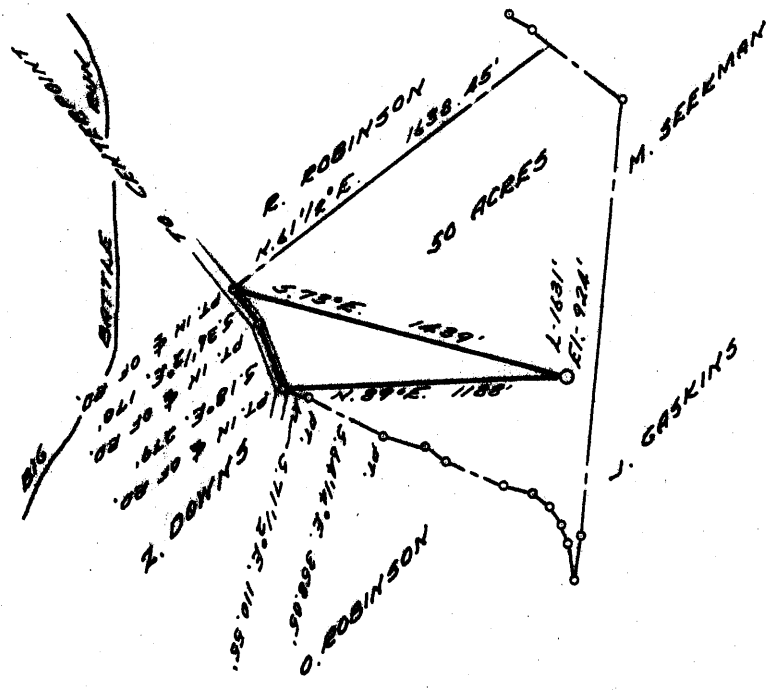


+ 3.19 S
1.91 W



COAL OWNED BY PG&H CONSOLIDATED COAL CO. ET AL

- NEW LOCATION
- RECONDITION
- DRILL DEEPER
- ABANDONMENT

"I, the undersigned, hereby certify that this map is correct to the best of my knowledge and belief and shows all the information required by paragraph 6 of the rules and regulations of the oil and gas section of the mining laws of West Virginia."
Minimum degree of accuracy is one part in 400

Signed Robert M. Hill 361E. (100)

COMPANY THE MANUFACTURERS LIGHT & HEAT CO.
 ADDRESS 800 UNION TRUST BLDG. PG&H, PA.
 FARM J. H. & E. DAVIS
 MAP 9-25-18 ACRES 50 LEASE NO. 4285
 WELL (FARM) NO. 1 SERIAL NO. 1881
 ELEVATION (SPIRIT LEVEL) 924'
 QUADRANGLE CENTERPOINT
 COUNTY BOONVILLE DISTRICT MCCLELLAN
 POINT OF PROVEN ELEVATION S.M. AT CENTERPOINT, W.VA.
S.M. ELEV. - 790'
 FILE NO. _____ DRAWING NO. Y-28-439
 DATE MAY 9, 1967 SCALE 1" = 800'

STATE OF WEST VIRGINIA
 DEPARTMENT OF MINES
 OIL AND GAS DIVISION
 CHARLESTON
 WELL LOCATION MAP
 FILE NO. 200-1200 9

+ DENOTES LOCATION OF WELL ON UNITED STATES TOPOGRAPHIC MAPS, SCALE 1 TO 62,500. LATITUDE AND LONGITUDE LINES BEING REPRESENTED BY BORDER LINES AS SHOWN.
 - DENOTES ONE INCH SPACES ON BORDER LINE OF ORIGINAL TRACING.

MAY 25 1967