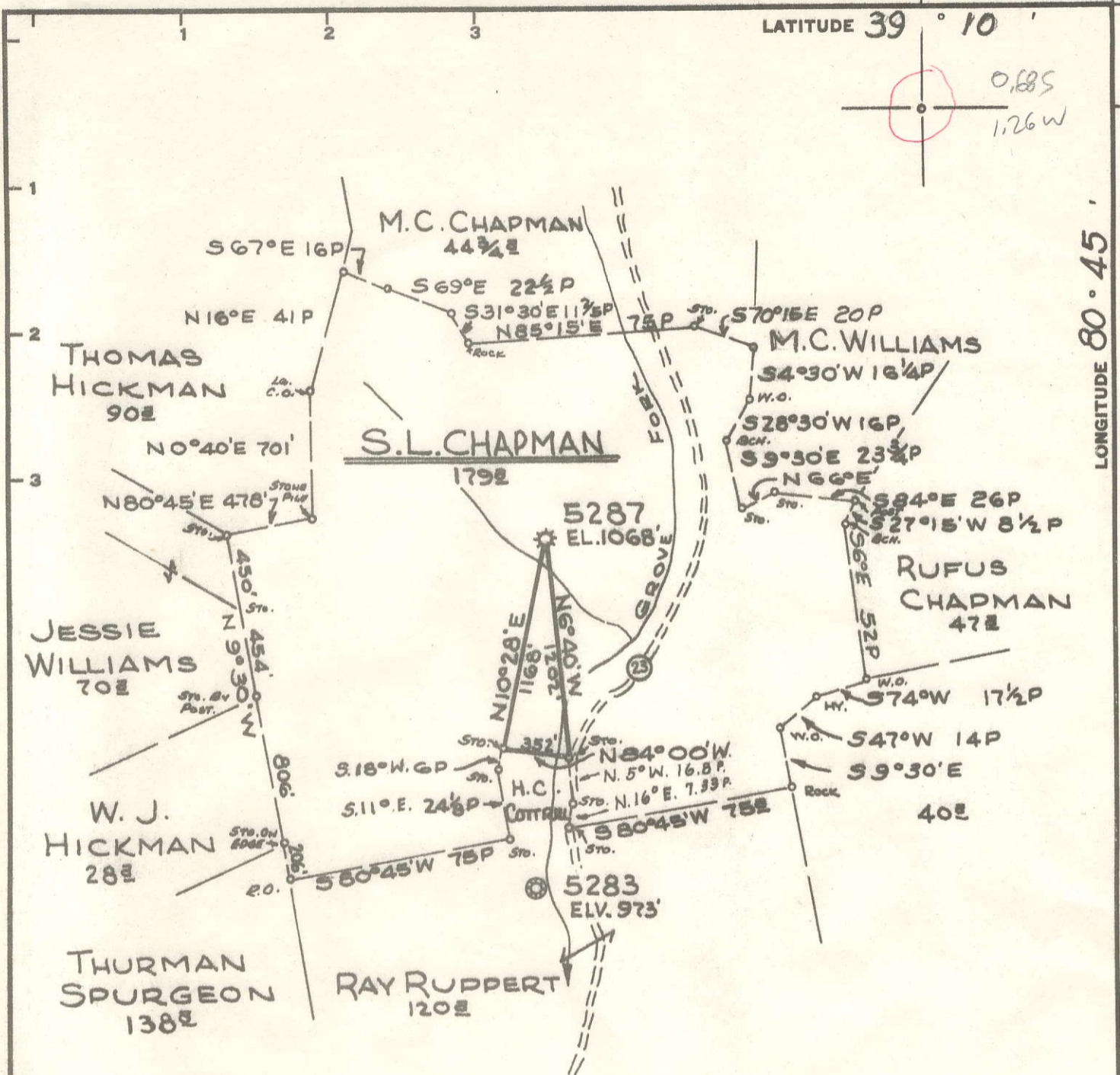


LATITUDE 39° 10'

0.885
1.26 W

LONGITUDE 80° 45'

3650'



Minimum Error of Closure 1' IN 200'
 Source of Elevation LEVELS FROM ROAD FORKS AT GROVE, W.VA., ELV. 918'
 "I, the undersigned, hereby certify that this map is correct to the best of my knowledge and belief and shows all the information required by paragraph 6 of the rules and regulations of the oil and gas section of the mining laws of West Virginia."

New Location.....
 Drill Deeper.....
 Abandonment.....

MAP SHEET 68 S20-W10 F.B. 1405 Pg. 36-37

Company CONSOLIDATED GAS SUPPLY CORP.
 Address CLARKSBURG, W.VA.
 Farm S.L. CHAPMAN
 Tract _____ Acres 200[±] Lease No. 13417
 Well (Farm) No. _____ Serial No. 5287
 Elevation (Spirit Level) 1068'
 Quadrangle HOLBROOK W.C. EC
 County DODDRIDGE District COVE
 Engineer Jackson M. Jarvis
 Engineer's Registration No. 2397
 File No. _____ Drawing No. _____
 Date DEC. 9, 1966 Scale 1" = 800'

STATE OF WEST VIRGINIA
 DEPARTMENT OF MINES
 OIL AND GAS DIVISION
 CHARLESTON

WELL LOCATION MAP
 FILE NO. DOD-1205-A

+ Denotes location of well on United States Topographic Maps, scale 1 to 62,500, latitude and longitude lines being represented by border lines as shown.

- Denotes one inch spaces on border line of original tracing.

73368 on CN6 maps

5145

DEC 12 1967