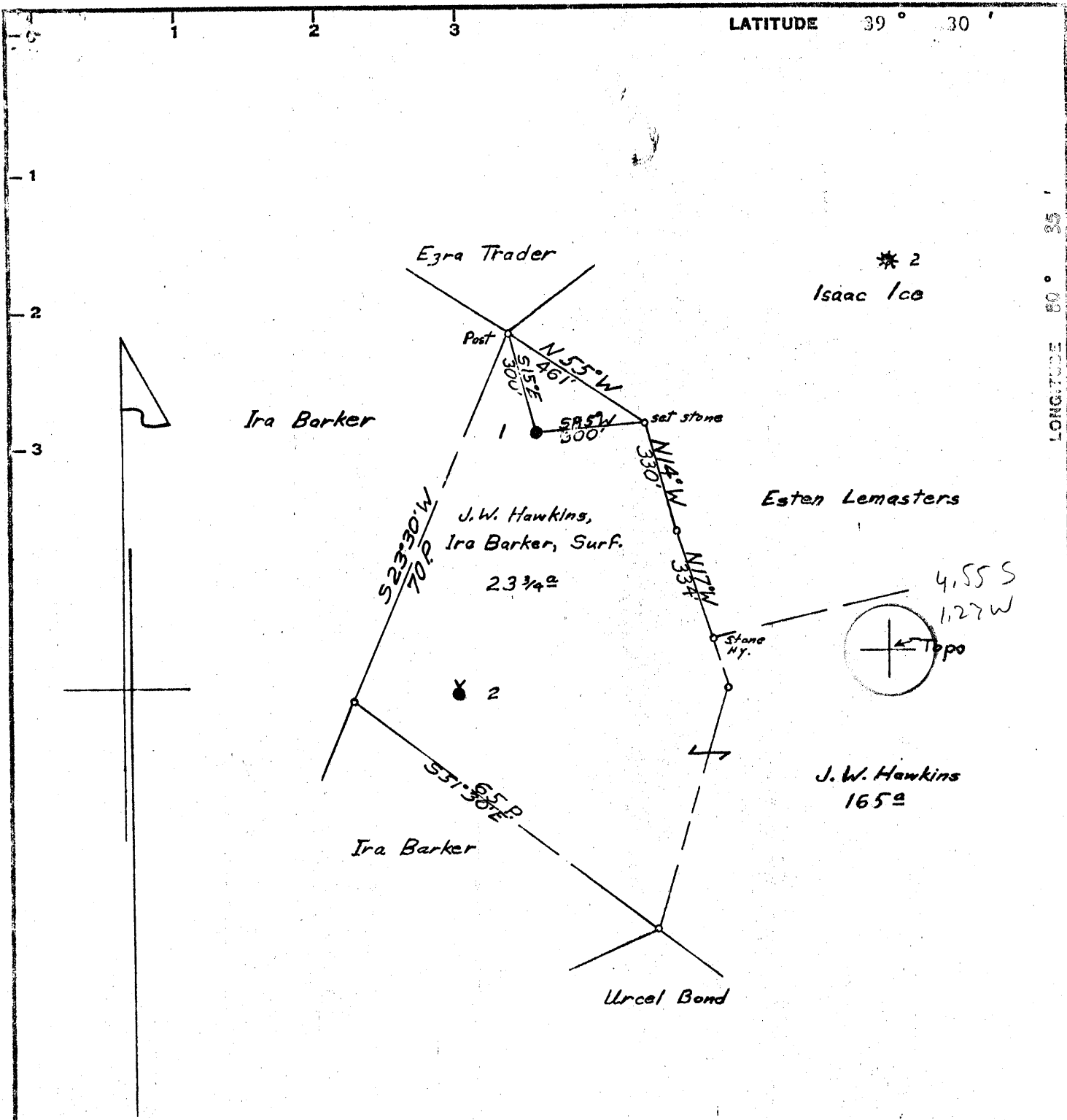


2/7/69



Minimum Error of Closure 1' in 200'
 Source of Elevation Pennzoil United, Inc. Records

I, the undersigned, hereby certify that this map is correct to the best of my knowledge and belief and shows all the information required by paragraph 6 of the rules and regulations of the oil and gas section of the mining laws of West Virginia.

- Fracture.....
- New Location.....
- Drill Deeper.....
- Abandonment.....

Signed: *A.C. Hillbert*

Map No. N48 Squares: N S² E 1-2 W

issued 8-8-69

Company	PENNZOIL UNITED, INC.		
Address	P. O. Box 1588, Parkersburg, W. Va.		
Farm	J. W. Hawkins		
Tract	257 1/4 A. of	Acres 165	Lease No. 13231 15652
Well (Farm) No.	1	Serial No.	
Elevation (Spirit Level)	1296.01 ground		
Quadrangle	Centerpoint		
County	Doddridge	District	McClellan
Engineer	<i>A.C. Hillbert</i>		
Engineer's Registration No.	2534		
File No.	Drawing No.		
Date	April 29, 1968	Scale	1" = 400'

STATE OF WEST VIRGINIA
 DEPARTMENT OF MINES
 OIL AND GAS DIVISION
 CHARLESTON

WELL LOCATION MAP

FILE NO. *Dod-1216 (A)*

+ Denotes location of well on United States Topographic Maps, scale 1 to 62,500, latitude and longitude lines being represented by border lines as shown.

- Denotes one inch spaces on border line of original tracing.



STATE OF WEST VIRGINIA
DEPARTMENT OF MINES
OIL AND GAS WELLS DIVISION

- Rotary
- Spudder
- Cable Tools
- Storage

Quadrangle Centerpoint

Permit No. DOD-1216 (Abandonment)

WELL RECORD

Oil or Gas Well Dry
(KIND)

Company SOUTH PENN. OIL COMPANY
Address P. O. Box 1588, Parkersburg, W. Va.
Farm J. W. Hawkins Acres
Location (waters) McElroy Creek
Well No. 1 Elev. 1269
District McClellan County Doddridge
The surface of tract is owned in fee by

Address
Mineral rights are owned by Pennzoil United, Inc.
P.O. Box 1588
Address Parkersburg, W. Va.

Drilling commenced 7-27-1895
Drilling completed 9-9-1895
Date Shot 9-19-1905 From To
With 2 1/2 gts.

Open Flow /10ths Water in Inch
 /10ths Merc. in Inch
Volume Cu. Ft.
Rock Pressure lbs. hrs.
Oil bbls., 1st 24 hrs.

WELL ACIDIZED (DETAILS)
WELL FRACTURED (DETAILS)

RESULT AFTER TREATMENT (Initial open Flow or bbls.)
ROCK PRESSURE AFTER TREATMENT HOURS
Fresh Water Feet Salt Water Feet
Producing Sand Depth

Casing and Tubing	Used in Drilling	Left in Well	Packers
Size			Kind of Packer
16			
13			
10			Size of
8 1/4	1465'		
6 3/4	2362'		Depth set
5 3/16			
4 1/2			
3			Perf. top
2			Perf. bottom
Liners Used			Perf. top
			Perf. bottom

Attach copy of cementing record.
CASING CEMENTED SIZE No. Ft. Date
Amount of cement used (bags)
Name of Service Co.
COAL WAS ENCOUNTERED AT FEET INCHES
 FEET INCHES FEET INCHES
 FEET INCHES FEET INCHES

Formation	Color	Hard or Soft	Top	Bottom	Oil, Gas or Water	Depth	Remarks
Pittsburgh Sand			962				
Big Injun			2343				
Total Depth			2429-1/2				

