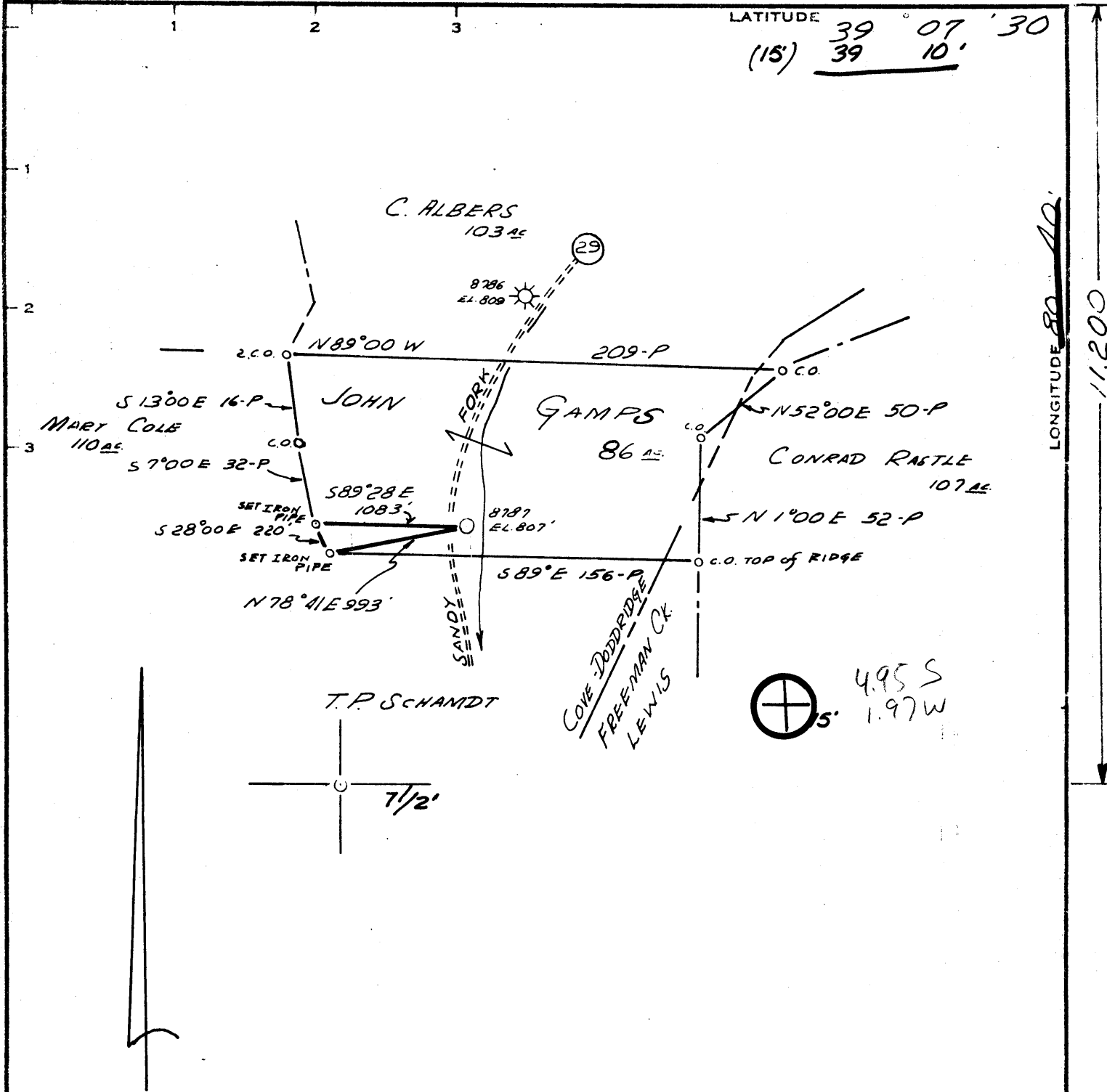


LATITUDE 39° 07' 30"  
(15) 39° 10'



LONGITUDE 80° 40' 11,200

Minimum Error of Closure 1 IN 200  
 Source of Elevation LEVELS FROM PLUGGED WELL 8738  
ELEVATION 1060.0  
 "I, the undersigned, hereby certify that this map is correct to the best of my knowledge and belief and shows all the information required by paragraph 6 of the rules and regulations of the oil and gas section of the mining laws of West Virginia."

- New Location
- Drill Deeper
- Abandonment

8/24/76  
 MAP SHEET 68 525 - W6 FB 1787 - PG 16 - 19

Company CONSOLIDATED GAS SUPPLY CORP.  
 Address CLARKSBURG, W. VA.  
 Farm JOHN GAMPS  
 Tract \_\_\_\_\_ Acres 86 Lease No. 54800  
 Well (Farm) No. \_\_\_\_\_ Serial No. 8787  
 Elevation (Spirit Level) 807'  
 Quadrangle VADIS WC  
 County DODDRIDGE District COVE  
 Engineer Jackson M. Jarvis  
 Engineer's Registration No. 2397  
 File No. \_\_\_\_\_ Drawing No. \_\_\_\_\_  
 Date 8-25-76 Scale 1" = 1000'

STATE OF WEST VIRGINIA  
 DEPARTMENT OF MINES  
 OIL AND GAS DIVISION  
 CHARLESTON

**WELL LOCATION MAP**  
 FILE NO. **DOD-1276-A**

+ Denotes location of well on United States Topographic Maps, scale 1 to 62,500, latitude and longitude lines being represented by border lines as shown.  
 - Denotes one inch spaces on border line of original tracing.

71792 on CNG map  
**47-017** SEP 15 1976