

Latitude

38 02 30

90 57 30

OGIS
7.5' loc
Kla 7/16/1999

0.728
1.470

Longitude

Topo Location

7.5' Loc. _____ 15' Loc. 3.605
_____ (calc.) 3.740

Company _____

Farm _____

15' Quad Winona SW
(sec.) _____

7.5' Quad Winona _____

District _____

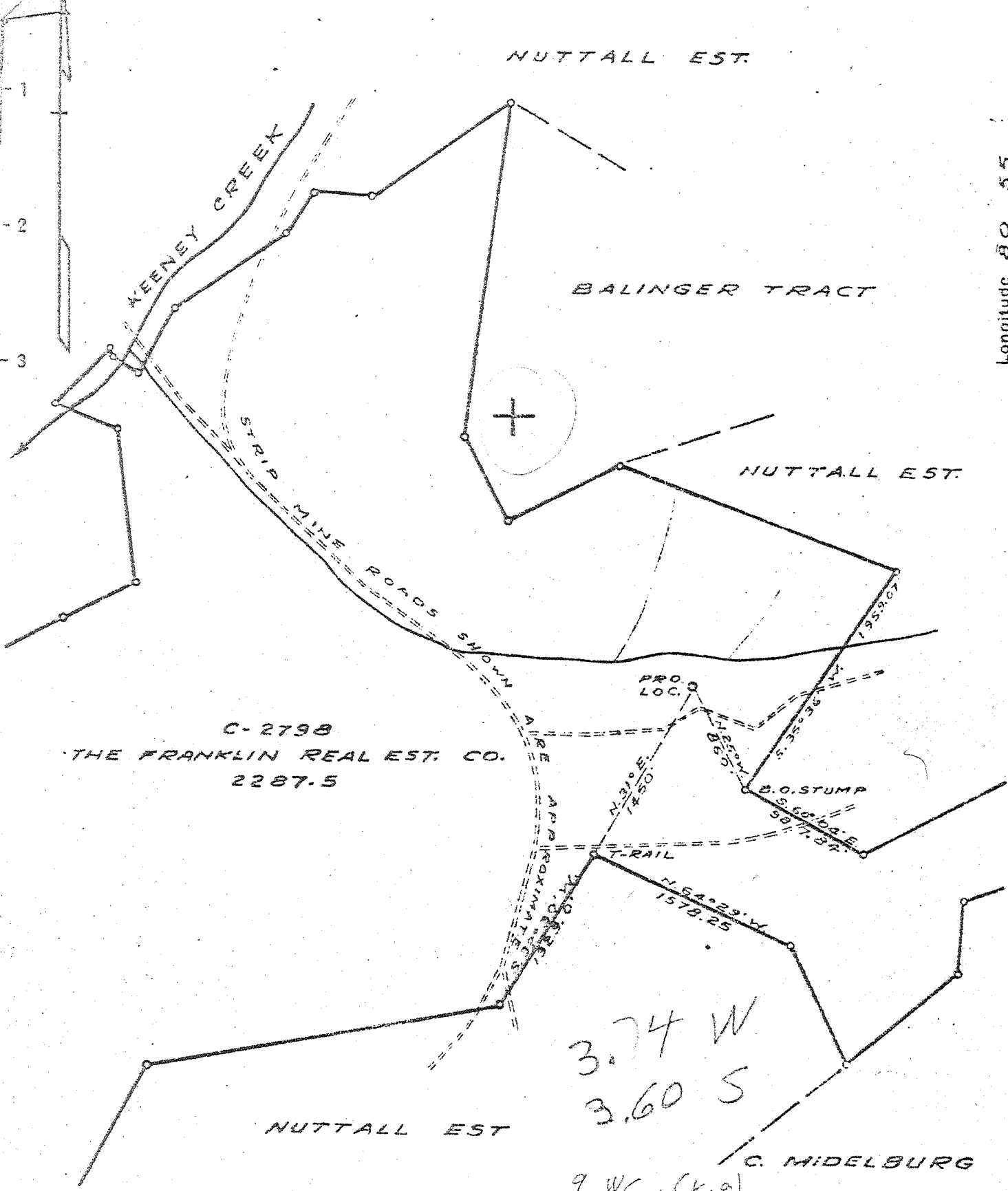
WELL LOCATION PLAT

County 019 Permit 42

DEEP WELL

Latitude 38 05

Longitude 80 55



C-2798
 THE FRANKLIN REAL EST. CO.
 2287.5

3.74 W
 3.60 S
 9 WC (K-8)

New Location
 Drill Deeper
 Abandonment

Samples 22D+E (1921-7403)

Company COLUMBIAN CARBON CO.
 Address CHARLESTON W. VA.
 Farm THE FRANKLIN REAL ESTATE CO.
 Tract _____ Acres 2287.5 Lease No. C-2798
 Well (Farm) No. 1 Serial No. _____
 Elevation (Spirit Level) 2342.0 STADIA
 Quadrangle WINONA S.W. 9-358-371
 County FAYETTE District NUTTALL
 Engineer J. M. Hill
 Engineer's Registration No. 772
 File No. _____ Drawing No. 317
 Date APRIL 11, 1945 Scale 1" = 1000'

STATE OF WEST VIRGINIA
 DEPARTMENT OF MINES
 OIL AND GAS DIVISION
 CHARLESTON

WELL LOCATION MAP
 FILE NO. FAY-42

+ Denotes location of well on United States Topographic Maps, scale 1 to 62,500, latitude and longitude lines being represented by border lines as shown.

- Denotes one inch spaces on border line of original tracing.

WEST VIRGINIA DEPARTMENT OF MINES
OIL & GAS DIVISION
W E L L R E C O R D

Permit No. Fay 42
Winona Quad.

Dry Hole
CASING & TUBING

Company	Columbian Carbon Company				
Address	Box 873, Charleston 23, W.Va.	16	26" 8	Same	
Farm	Franklin Real Estate Co. A 2287.5	13	3/8	514' 11 Pld. 48#	
Location	Keeney Creek	17 1/2	40#	1588' 10 Pld.	
Well No.	1-GW-796 Elev. 2344 df	8 1/2	24#	2151' 11 Pld.	
District	Nuttall Fayette County	7	23#	7164' 1 3280' 5	
Surface	Franklin R/E Co. 301 Virginia St., E. Charleston, 1, W.Va.				Midget B.H. Packer Size 7"
Mineral	Same				Depth 7131 SLM
Commenced	5-1-45				
Completed	11-8-47				
Not shot					
Volume					Coal at 23' 12"

Fresh Water
Salt Water

Dry Hole
105' 2-14" blrs.; 133' H.F.
1990' H.F.; 7224-7227' 1/2-6" blr/hr
7216' 1 blr./2 hrs.

see sample studies

Soil	0	8	Slate & Shells	1233	1250
Sand	8	23	Lime	1250	1276
✓ Coal	23	24	Sand	1276	1285
Sand	24	62	Lime	1285	1292
Slate & Shells	62	70	Sand	1292	1303
Sand	70	97	Sandy Lime	1303	1308
Slate	97	125	Sand	1308	1384
Sand	125	187	Red Lime	1384	1463
Slate	187	192	Sand	1463	1469
Sand	192	198	Slate	1469	1471
Slate	198	234	Red Lime	1471	1485
Sand	234	250	Slate & Shells	1485	1512
Slate & Shells	250	286	Red Lime	1512	1565
Sand	286	326	Lime Shell	1565	1567
Slate & Shells	326	334	Slate	1567	1570
Sand	334	345	Gray Lime	1570	1583
Slate	345	347	Slate & Shells	1583	1653
Sand	347	358	Black Lime	1653	1713
Slate & Shells	358	365	Slate & Shells	1713	1772
Sand	365	420	Black Lime	1772	1844
Black Lime	420	431	Grey Lime - Biglime?	1844	1985
Slate	431	448	Sand - lime	1985	2040
Lime	448	459	Lime - Biglime	2040	2192
Sand	459	500	✓ Injun Sand	2192	2330
Slate	500	506	Slate & Shells	2330	2461
Lime Shells	506	513	Lime	2461	2477
Black Lime	513	523	Slate & Shells	2477	2689
Sandy Lime	523	534	✓ Brown Shale	2689	2697
Slate & Shells	534	581	✓ Berea Shells	2697	2702
Lime	581	610	Slate & Shells	2702	3288
Sand	610	619	Lime	3288	3461
Slate & Shells	619	631	Slate & Shells	3461	6717
Lime	631	637	Shale (7115 SLM)	6717	7140 DLM
Sand	637	650	✓ Corniferous Lime	✓ 7115 SLM	7216
Slate	650	735	✓ Oriskany Sand	✓ 7216	7239
Lime	735	752	✓ Lime	7239	7285
Slate & Shells	752	787	Sand	7285	7308
Lime	787	813	Lime	7308	7406 T.D.
Red Rock	813	820	Dry Hole-Plugged and abandoned 12-8-47		
Red Lime	820	899	Gas 1870' small show; Gas 6054' blew out		
Slate	899	902	Gas 7151' blew out; 1029-30 3/10 W 2" 73 MCF.		
Black Lime	902	938	Cement Record: 5-31-45 13 3/8" casing- ran		
Red Lime	938	954	12 bags aquagel and 50 lbs. Fibertex. *		
Red Rock	954	992	7-5-45 10 1/2" csg. aquagelled. 8-9-45, 85/8csg.		
Red Lime	992	1051	ran 25 bags aquagel through tubing. Pipe		
Grey Lime	1051	1082	floated in, 10-11-47, 7" csg.-ran 110 bags		
Slate	1082	1100	Aquagel, C.C.C.C.		
Red Lime	1100	1115	Gas 1030-1035 12/10 W 1" 36,500		
Red Rock	1115	1145	Gas 1036-1039 12/10 W 1" 36,500		
Red Lime	1145	1196	Gas 1045' 8/10 W 1" 29,800		
Red Lime	1196	1205	Gas 1050' 6/10 W 1" 25,830		
Grey Lime	1205	1233	Gas 1081' 3/10 W 1" 18 M blew down to		
Red Lime	1205	1233	not enough to gauge at 1140'		
			*circulation while mixing-returns 450'.		

1750

485

7115
2344
-477
7216
2344
487