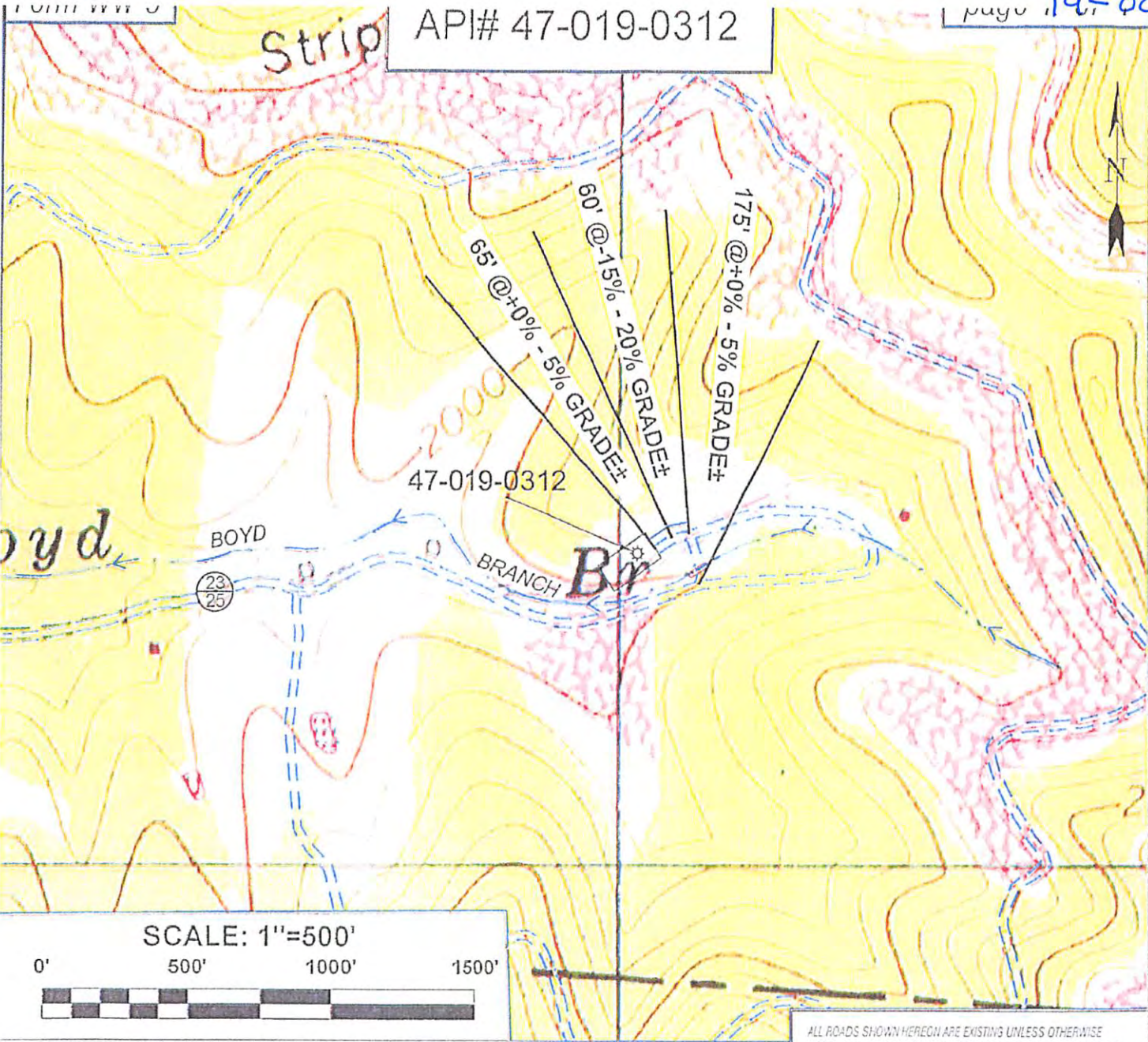






Strip API# 47-019-0312

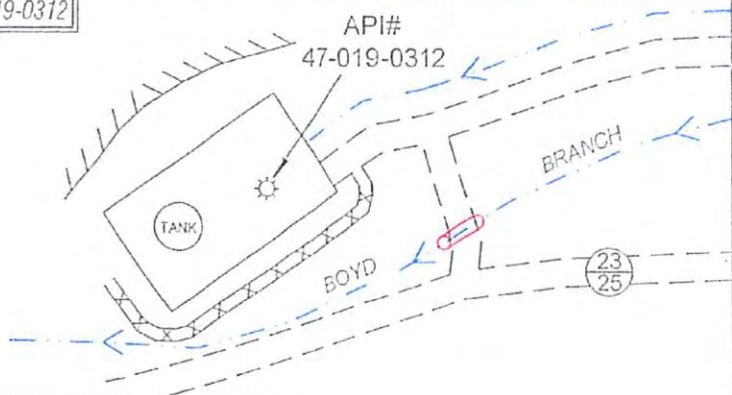


SCALE: 1"=500'



Detail Sketch for API# 47-019-0312

Not To Scale



ALL ROADS SHOWN HEREON ARE EXISTING UNLESS OTHERWISE NOTED AND SHALL BE MAINTAINED IN ACCORDANCE WITH WV D.E.P. OIL AND GAS BMP MANUAL ENTRANCES AT COUNTY/STATE ROADS SHALL BE MAINTAINED IN ACCORDANCE WITH WV D.O.T. REGULATION. SEPARATE PERMITS MAY BE REQUIRED BY THE D.O.T.

SEDIMENT BASINS (TRAPS) AND APPROPRIATE EROSION CONTROL BARRIERS ARE TO BE CONSTRUCTED AT ALL CULVERT AND CROSS DRAIN INLETS AND OUTLETS AS REQUIRED IN THE WV D.E.P. OIL AND GAS BMP MANUAL. FIELD CONDITIONS (ROCK OUTCROPS AND BEDROCK) MAY PROHIBIT INLET TRAPS BEING INSTALLED. WHEN THESE CONDITIONS EXIST ADDITIONAL EROSION CONTROL MEASURES SHALL BE EVALUATED AND UTILIZED AS NEEDED.

EARTHWORK CONTRACTORS ARE RESPONSIBLE FOR NOTIFICATION TO THE OPERATOR AND INSPECTOR PRIOR TO ANY DEVIATION FROM THIS PLAN.

TEMPORARY SEED & MULCH ALL SLOPES AFTER CONSTRUCTION OF LOCATION.

- = EXISTING CULVERT
- = PROPOSED CULVERT 15' MIN. UNLESS OTHERWISE NOTED
- = PROPOSED STREAM CROSSING
- = APPROXIMATE POINT OF DISTURBANCE

**SLS**  
Land & Energy Development  
Solutions from the ground up.  
P.O. Box 4150 • Venhom Drive • Gettysburg, WV 26033 • (304) 462-5634  
www.slsurvey.com

TOPO SECTION OF OAK HILL  
7.5' TOPO QUADRANGLE

DRAWN BY	FILE NO.	DATE	CADD FILE:
MGF	8763	12-08-17	8763REC.dwg

RECEIVED  
Office of Oil and Gas  
DEC 21 2017  
WV Department of  
Environmental Protection  
02/09/2018