








Diversified Gas & Oil Corporation
100 Diversified Way
Pikeville KY, 41051

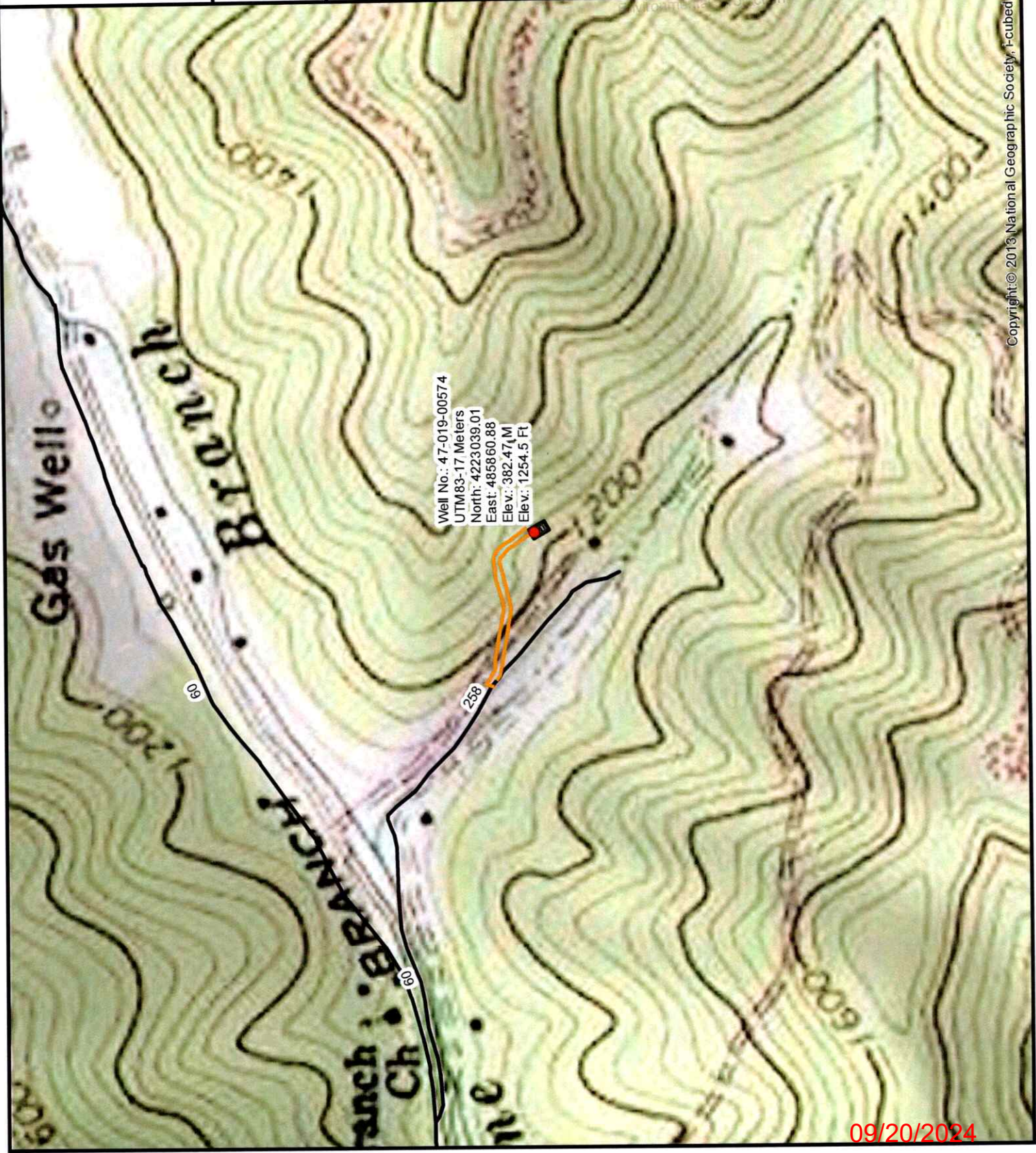
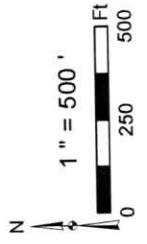
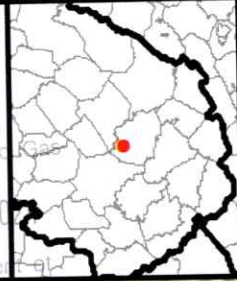
47-019-00574

Plugging Map

Legend

-  Well
-  Access Road
-  Pits
-  Pad
-  Public Roads

RECEIVED
Office of Oil and Gas
SEP 12 2013



Copyright © 2013 National Geographic Society, Inc.








Diversified Gas & Oil Corporation
100 Diversified Way
Pikeville KY, 41051

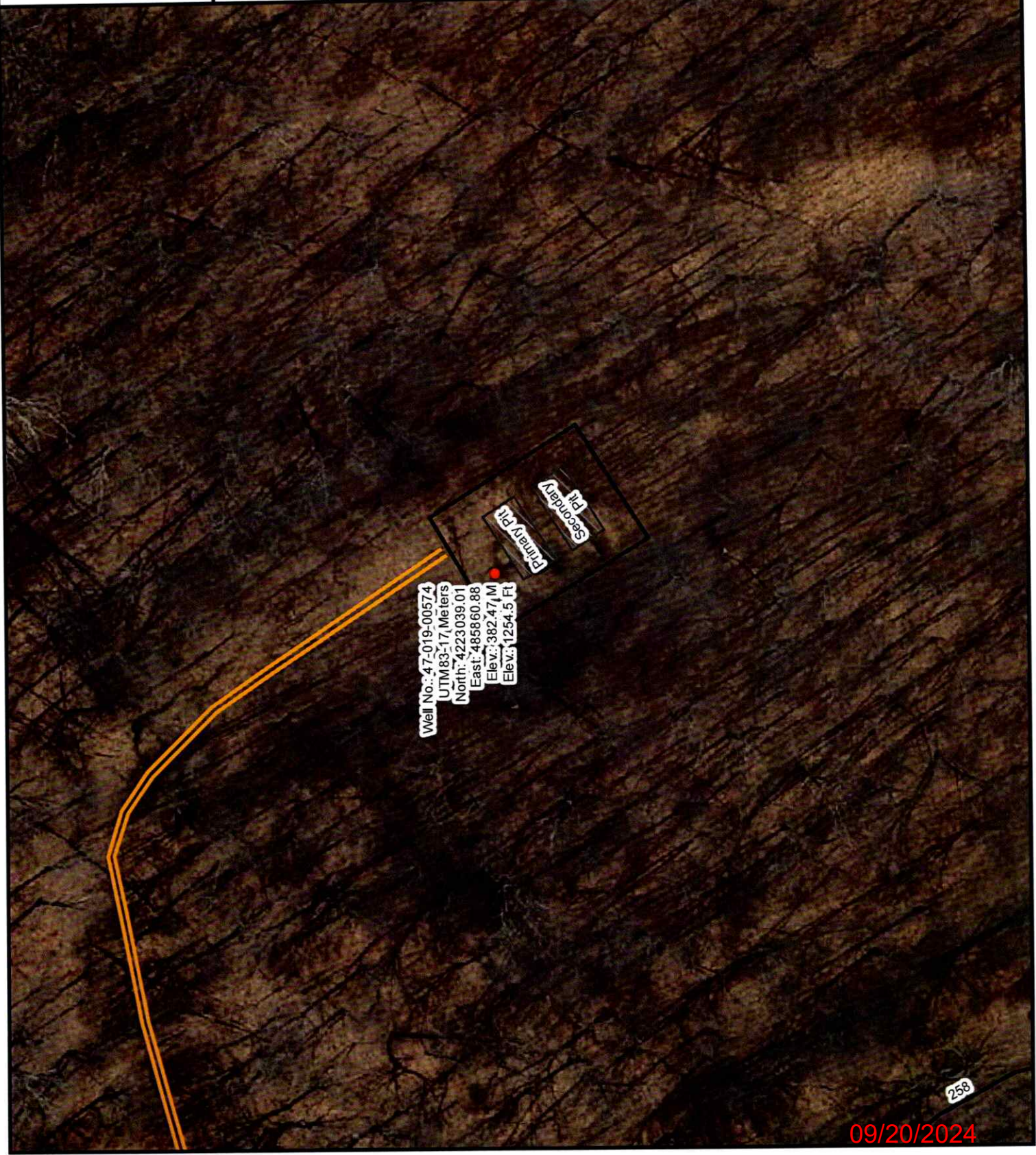
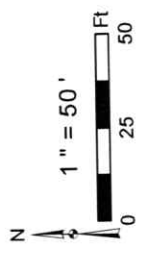
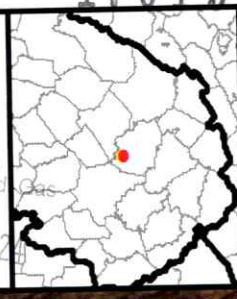
47-019-00574

Plugging Map

Legend

-  Well
-  Access Road
-  Pits
-  Pad
-  Public Roads

RECEIVED
Office of Oil and Gas
SEP 12 2024



Well No.: 47-019-00574
 UTM83-17, Meters
 North: 4223039.01
 East: 485860.88
 Elev.: 382.47 M
 Elev.: 1254.5 Ft

4701900574

WW-7
8-30-06



West Virginia Department of Environmental Protection
Office of Oil and Gas
WELL LOCATION FORM: GPS

API: 4701900574 WELL NO.: S-599

FARM NAME: Ballard Tolliver

RESPONSIBLE PARTY NAME: Diversified Production, LLC

COUNTY: Fayette DISTRICT: Falls (Valley)

QUADRANGLE: Gauley Bridge 7.5'

SURFACE OWNER: Greg & Carla Tolliver

ROYALTY OWNER: Greg & Carla Tolliver

UTM GPS NORTHING: 4223039.01

UTM GPS EASTING: 485860.88 GPS ELEVATION: 1254.5'

RECEIVED
Office of Oil and Gas

SEP 12 2024

WV Department of
Environmental Protection

The Responsible Party named above has chosen to submit GPS coordinates in lieu of preparing a new well location plat for a plugging permit or assigned API number on the above well. The Office of Oil and Gas will not accept GPS coordinates that do not meet the following requirements:

- Datum: NAD 1983, Zone: 17 North, Coordinate Units: meters, Altitude: height above mean sea level (MSL) – meters.
- Accuracy to Datum – 3.05 meters
- Data Collection Method:
Survey grade GPS ____: Post Processed Differential ____

Real-Time Differential ____

Mapping Grade GPS X: Post Processed Differential X

Real-Time Differential ____

- Letter size copy of the topography map showing the well location.

I the undersigned, hereby certify this data is correct to the best of my knowledge and belief and shows all the information required by law and the regulations issued and prescribed by the Office of Oil and Gas.

Signature

Chris Veazey - Director of Administration
Title

6/13/24
Date

RECEIVED
Office of Oil and Gas

JUL 01 2024

WV Department of
Environmental Protection

09/20/2024