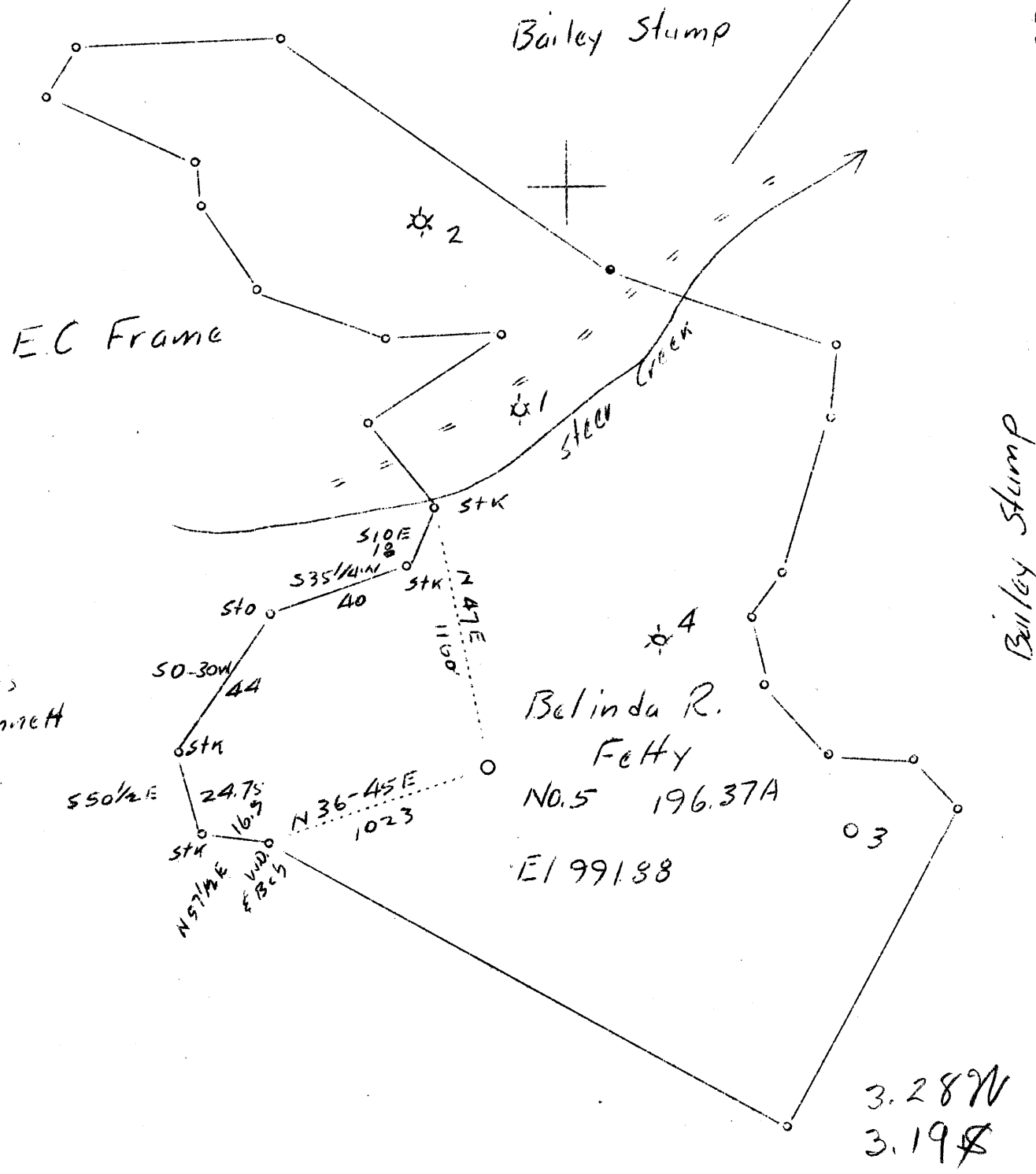


LATITUDE 38° 50'

LONGITUDE 80° 55'



Louis Bennett

Belinda R. Fetty
No. 5 196.37A
E 1991.88

3.2870
3.198

Company Phil D. Phillips
 Address Spencer, W.Va.
 Farm Belinda R. Fetty
 Tract 196.37 Acres Lease No.
 Well (Farm) No. 5 Serial No.
 Elevation (Spirit Level) 991.88
 Quadrangle ~~Stumptown~~ *Blenville (S.W.)*
 County Gilmer District Center
 Engineer L.F. Dye
 Engineer's Registration No. 804
 File No. Drawing No.
 Date Sept. 15, 1937 Scale 1"=40 Poles

STATE OF WEST VIRGINIA
 Department of Mines
 OIL AND GAS DIVISION
 CHARLESTON

WELL LOCATION MAP
 File No. 411-247

+ Denotes location of well on United States Topographic Maps, scale 1 to 62,500, latitude and longitude lines being represented by border lines as shown.

— Denotes one inch spaces on border line of original tracing.

6-6 180

WEST VIRGINIA DEPARTMENT OF MINES

OIL & GAS DIVISION

WELL RECORD

Permit No. Gil-247

Gas Well

Stumptown S. W. Quad. (should be Glenville Quad.)

CASING & TUBING

Company	Phil D. Phillips, Spencer, J. Va.		
Farm	Belinda R. Fetty Acres 200	8-1/4	885'
Location	Right Fork Steer Creek		
Well No.	5 Elev. 991.88		
District	Center County Gilmer		
Surface	Fletcher Stout, Shock, W. Va.		
Mineral	Belinda R. Fetty, Takoma Park, Md.		
Drilling Commenced	October 11, 1937		
Drilling Completed	November 6, 1937		
Date shot	Not Shot		
Open Flow	-		
Volume	-		
Rock Pressure	450 lbs.	Hrs.	
Fresh Water	-		

FORMATION COLOR		HA'	TOP	BASE	RESULT	FORMATION COLOR		HA'	TOP	BASE	RESULT
Clay			0	47							
Sand			47	102							
Slate			102	130							
Rock	Red		130	144							
Slate			144	170	Water	498			3		bailers per hr.
Sand			170	210							
Rock	Red		210	240							
Slate			240	250							
Rock	Red		250	312		642					Steel Line
Lime	Blue		312	337							
Slate			337	380							
Rock			380	390							
Slate			390	432							
Lime			432	490	Water	1123			1		bailer per hr.
Sand			490	530							
Lime			530	550							
Rock			550	565							
Lime			565	575							
Slate			585	600							
Sand			600	610							
Slate	Black		610	705							
Lime & Sand			705	750							
Lime			750	783		1361					Steel Line
Slate			783	915							
Sand			915	935							
Sand			935	950	Gas	1416			11/10		Merc. thru 2"
Slate			950	1025							
Lime			1025	1105							
Sand			1105	1170							
Slate & Shells			1170	1230							
Sand			1230	1310							
Slate & Shells	Black		1310	1355							
Maxim Sand			1355	1421							

160