

2100281A

Topo Quad: Vadis 7.5'

Scale: 1" = 2000'

County: Gilmer

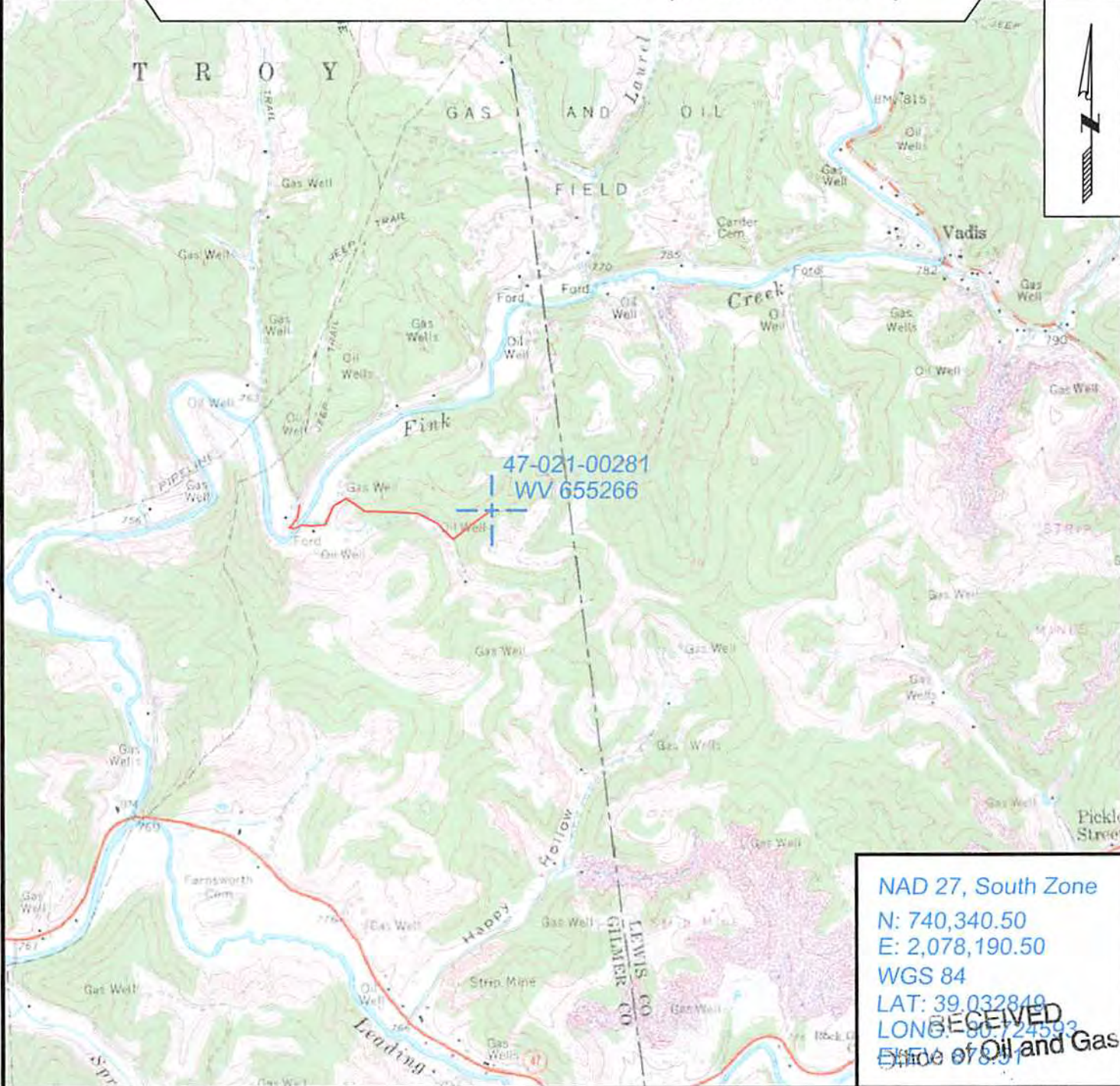
Date: April 18, 2014

District: Troy

Project No: 25-19-00-07

47-021-00281 WV 655266 (Talbot #1252)

Topo



NAD 27, South Zone
 N: 740,340.50
 E: 2,078,190.50
 WGS 84
 LAT: 39.032819
 LONG: 80.724593
 ELEV: 678.91

RECEIVED
 State of Oil and Gas



SURVEYING AND MAPPING SERVICES PERFORMED BY:
ALLEGHENY SURVEYS, INC.
 1-800-482-8606
 237 Birch River Road
 Birch River, WV 26610
 PH: (304) 649-8606
 FAX: (304) 649-8608

PREPARED FOR:
EQT Production Company
 P.O. Box 280
 Bridgeport, WV 26330

MAY 08 2014
 WV Department of Environmental Protection