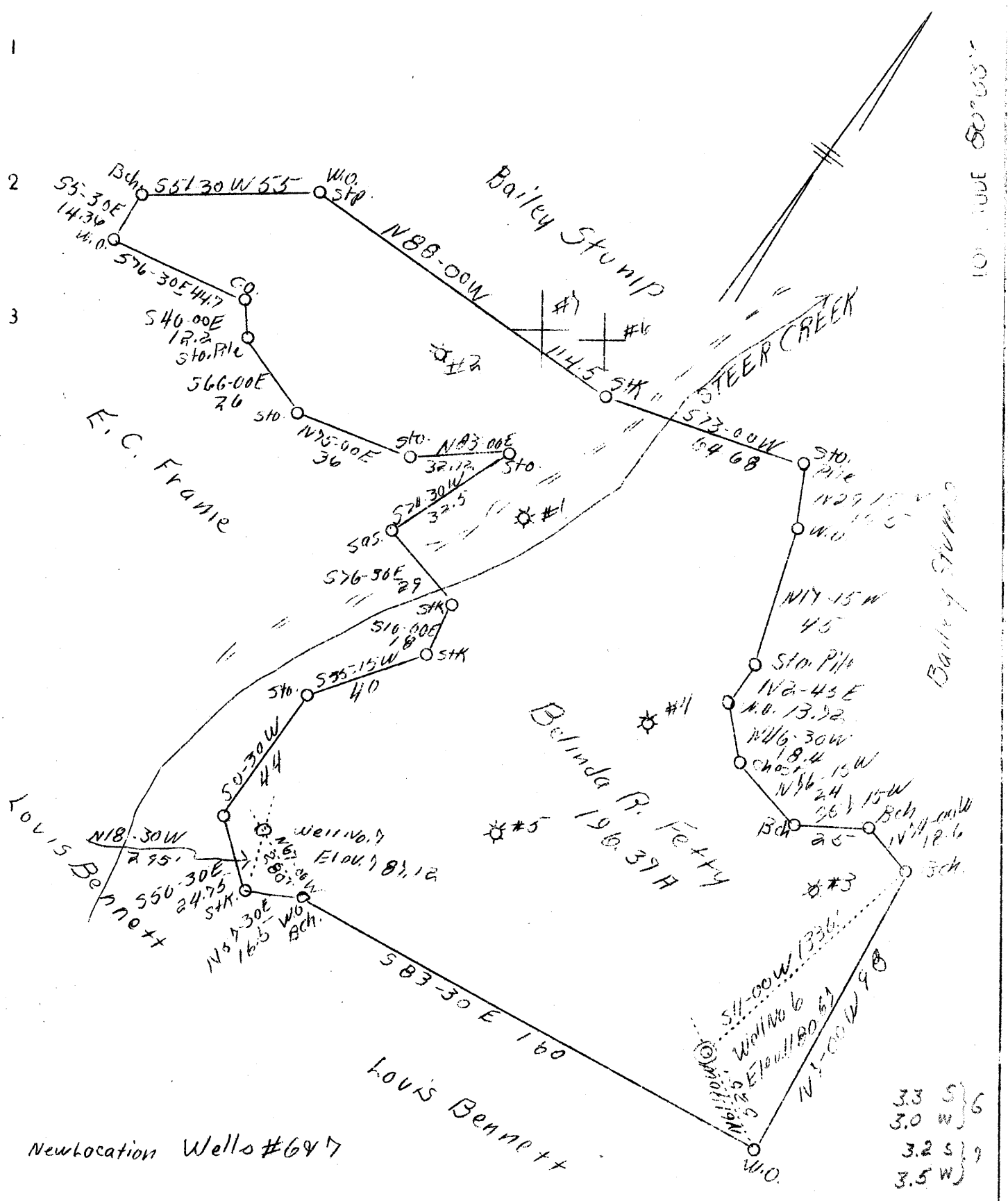


MM

LATITUDE 38° 50'



Company Phil D. Phillips
 Address Spencer, N.C.
 Farm Belinda R. Fetty
 Tract 100.57
 Well (Farm) No. 6-7
 Elevation (Spirit Level) 6 1180.67
 7 727.12
 Quadrangle ~~Stump town~~ *Glennville*
 County Gilmer *NC*
 District Center
 Engineer L. E. Dye
 Engineer's Registration No. 604
 Date Mar. 12, 1938
 Scale 1" = 40'

STATE OF NORTH CAROLINA
 Department of Mining
 CHARLOTTE
 File No. G11-321
well #6
 x Denotes location of well on U.S. Topographic Maps, Scale 1 to 62,500 latitude and longitude lines being represented by border lines as shown
 - Denotes one inch spaces on border line of original tracing.

6-6-190

WEST VIRGINIA DEPARTMENT OF MINES
OIL AND GAS DIVISION

W E L L R E C O R D

For. It. No. Gil.-321

Gas Well
Casing & Tubing

Company	Phil D. Phillips	10	77'
Address	Spencer, W. Va.	8 1/2	691'
Farm	Belinda R. Fetty Acres 200	6-5/8	1926
Location	Right Fork Stear Creek		
Well No.	6 Elev. 1180.67		
District	Center Gilmer County		
Surface	Fletcher Stout		
Mineral	Belinda R. Fetty		
Drilling commenced	July 2, 1938		
Drilling completed	Aug. 10, 1938		
Date shot	Aug. 13, 1938	Depth of shot	2096
Volume	42,000		

Formation	Color	Har	TOP	Base	Result	Formation	Color	Har	TOP	Base	Result
Soil			0	5		Sand	gray		1885	1910	
Rock Sand			5	80		Slate			1910	1911	
Slate			80	110		Big lime			1911	2040	
Sand & Rock			110	150		Injun			2040	2096	
Red Rock			150	155		Slate	blue		2096	2296	
White Slate			155	186							
Black Slate			186	200							
Sand			200	206							
White Slate			206	250		Slate-80-110	Water		200'	1 1/8" bailer per Hr.	
Blue Line			250	275		Wh. Slate	155-186		260'	" "	
Red Rock			275	290		" "	206-250	Gas	675		
Blue Line			290	315		Red Rock	275-290	Gas	750		
Red Rock			315	400							
Blue Line			400	445	Gas						
Red Rock			445	456	1180-1205						
White Slate			456	470	1205 steel line						
Rd. Rock			470	485							
Blue Line			485	510	Gas 1600-1612						
White Sand			510	522							
Bl. Slate			522	540							
White Slate			540	581	Oil 1734						
Red Rock			581	618							
Blue Rock			618	635	Gas 1888						
Slate			635	660							
Blue Line			660	670	Gas 1988-1990 12/10--1"						
White Sand			670	695							
White Sand			695	720							
Blue Line			720	825	Gas 2000-2005 3/10--1"						
Slate			825	830							
White Sand			830	925							
Slate			925	1031	Total Depth 2296						
White Sand			1031	1040	Filled to 2096						
Sh. Slate			1040	1045							
Sand		H	1045	1077							
Slate			1077	1120							
Wh. Sand			1120	1145							
Wh. Slate			1145	1156							
Sand	Dark		1156	1218							
Slate, Bl.			1218	1262							
Sand		H	1262	1320							
Slate			1320	1410							
Lime			1410	1574							
Sand		H & S	1574	1635							
Slate & shells			1635	1754							
Mixon sand			1754	1829							
Slate			1829	1852							
Little Lime			1852	1879							
Slate			1879	1885							
Sand											

~~1911~~
~~160~~
~~2071~~
~~118~~
~~890~~

 2096
 1181
 915