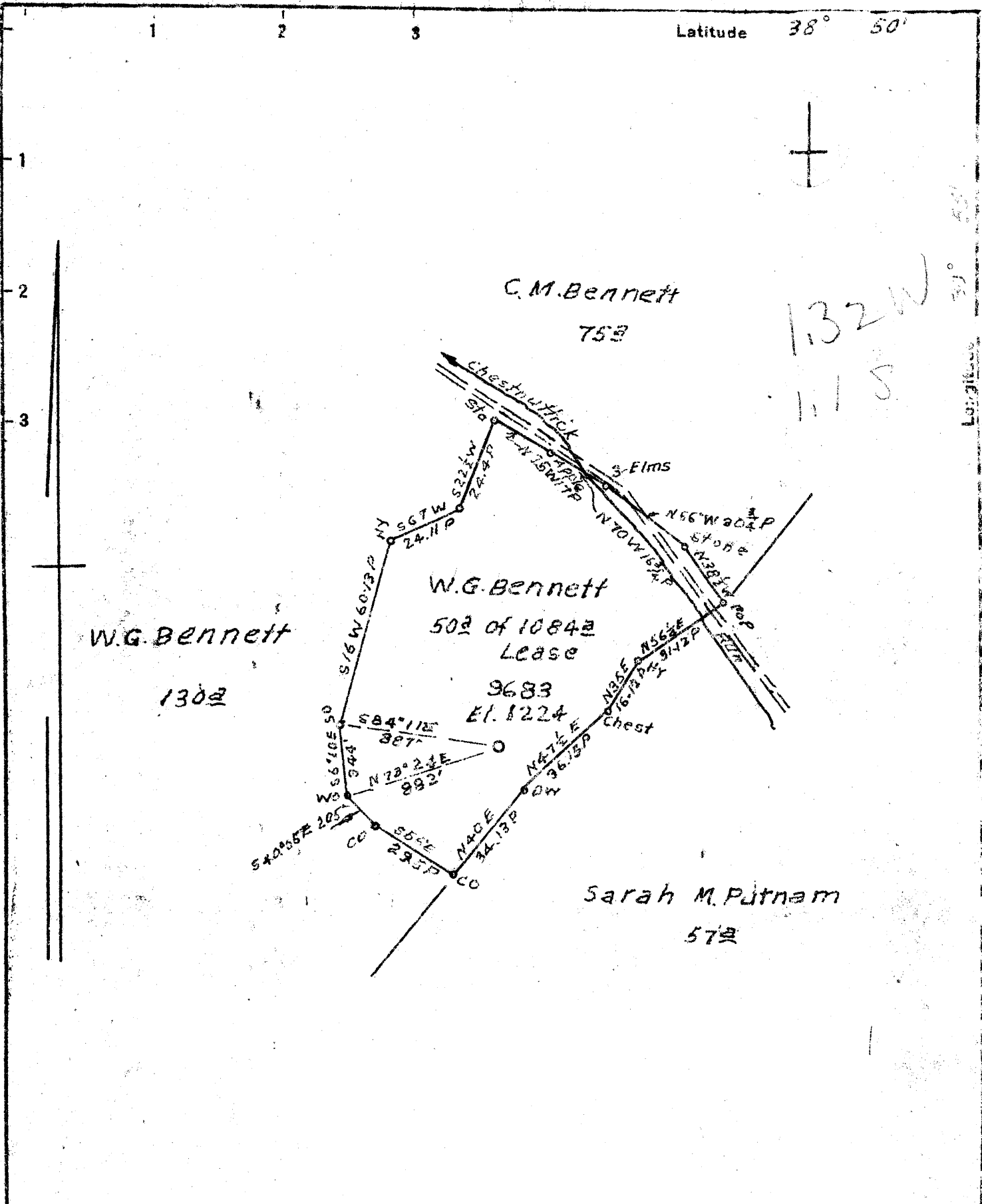


Latitude 38° 50'



New Location...
 Drill Deeper.....
 Abandonment.....

Map Sh 97543 W20FB995 P-15-16-

Company Hope Natural Gas Co
 Address Clarksburg, W. Va.
 Farm W.G. Bennett
 Tract _____ Acres 1084 Lease No. 28033
 Well (Farm) No. _____ Serial No. 9583
 Elevation (Spirit Level) 1224
 Quadrangle Glenville
 County Gilmer District Center
 Engineer Guy H. Bradley
 Engineer's Registration No. 2425
 File No. _____ Drawing No. _____
 Date 9-6-51 Scale 1" = 40 P

STATE OF WEST VIRGINIA
 DEPARTMENT OF MINES
 OIL AND GAS DIVISION
 CHARLESTON

WELL LOCATION MAP
 FILE NO. GIL-886

+ Denotes location of well on United States Topographic Maps, scale 1 to 62,500. latitude and longitude lines being represented by border lines as shown.

- Denotes one inch spaces on border line of original tracing.

WEST VIRGINIA DEPARTMENT OF MINES
OIL & GAS DIVISION
W E L L R E C O R D

Permit No. GIL 886
Glenville Quad.

Gas

Company	Hope Natural Gas Co.		CASING & TUBING		
Address	445 W. Main St., Clarksburg, W. Va.				
Farm	W. G. Bennett Acres	1084	10	328	328
Well No.	9683	Elev. 1224	8 $\frac{1}{4}$	863	863
District	Center County - Gilmer		6 5/8	1940	1940
Commenced	October 6, 1951				
Completed	Nov. 1, 1951				
Date Shot	11/1/51 From 2063 to 2083				
Volume	85.000				
Pressure	260# Fresh Water 190'				
Surface	0	65	SECOND SALT		1492
Red Rock	65	87	Slate	1492	1574
Slate	87	180	THIRD SALT	1574	1650
Lime	180	236	Slate	1650	1774
Slate	236	307	Lime	1774	1786
Red Rock	307	388	MAXON	1786	1846
Sand	388	412	Pink Rock	1846	1850
Red Rock	412	466	Slate	1850	1878
Lime	466	486	Little Lime	1878	1900
Red Rock	486	547	Slate	1900	1904
Slate	547	603	BLUE MUNDAY	1904	1920
Red Rock	603	633	Slate	1920	1930
Lime	633	696	-BIG LIME	1930	2032
Sand	696	734	BIG INJUN	2032	2095
Slate	734	770			
Sand	770	795	TOTAL DEPTH		2145
Slate	795	849			
Sand	849	992	Water	190	
Slate	992	1094	Show Gas	875	
GAS SAND	1094	1137	Gas	1594-1634-1650	
Slate	1137	1172	Small Gas	1792	
FIRST SALT	1172	1241	Show Oil	1910	
Bl. Slate	1241	1458	Gas	2065	2083

Sample study
2093 Base of Cgr
1224

-869

1933
160

2093
1224

-869