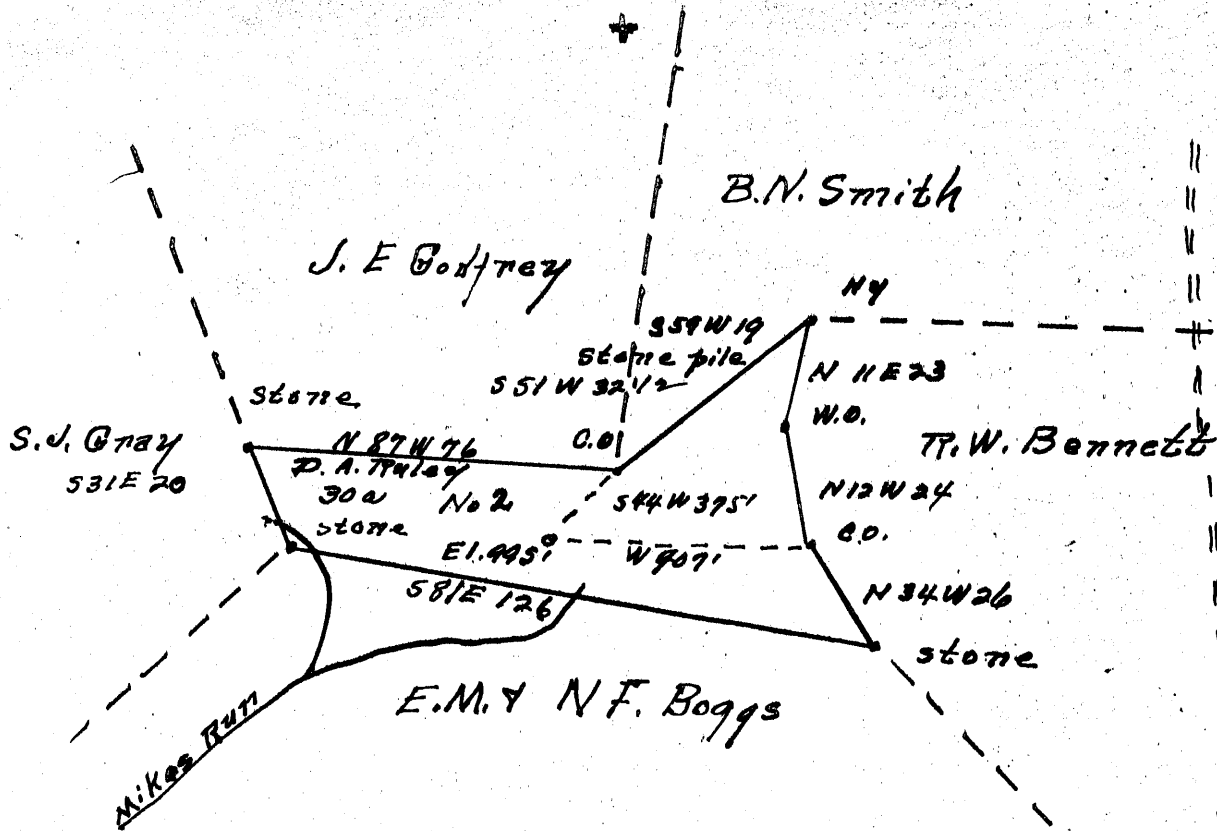


Latitude 38° 55'

Longitude 80° 55'



2.95 S
3.58 W

New Location...
 Drill Deeper.....
 Abandonment.....

Company Leonard Cain
 Address Grantsville, W. Va.
 Farm D.A. Ruler
 Tract _____ Acres 30 Lease No. _____
 Well (Farm) No. 2 Serial No. _____
 Elevation (Spirit Level) 995'
 Quadrangle Glennville - WC
 County Bilmar District CENTER
 Engineer Donald W. Morris
 Surveyed by Holly Nestor
 Engineer's Registration No. 1653
 File No. _____ Drawing No. _____
 Date 9-1-53 Scale 1" = 40 poles

STATE OF WEST VIRGINIA
 DEPARTMENT OF MINES
 OIL AND GAS DIVISION
 CHARLESTON

WELL LOCATION MAP

FILE NO. GIL-971

+ Denotes location of well on United States Topographic Maps, scale 1 to 62,500, latitude and longitude lines being represented by border lines as shown.

- Denotes one inch spaces on border line of original tracing.



STATE OF WEST VIRGINIA
DEPARTMENT OF MINES
OIL AND GAS DIVISION

Quadrangle Glennville

WELL RECORD

Permit No. GIL-971

Oil or Gas Well Gas

(KIND)

Company Leonard Cain
Address Grantsville, W. Va.
Farm D. A. Ruley Acres 30
Location (waters) Stear Creek
Well No. 2 Elev. 775'
District Center County Gilmer
The surface of tract is owned in fee by D. A. Ruley
Address Grantsville, W. Va.
Mineral rights are owned by D. A. Ruley
Address Grantsville, W. Va.

Casing and Tubing	Used in Drilling	Left in Well	Packers
Size			Kind of Packer
16			
13			
10	200		Size of
8 1/2	1050		
6 1/2	1945	1945	Depth set
5 3/16			
3			Perf. top
2			Perf. bottom
Liners Used			Perf. top
			Perf. bottom

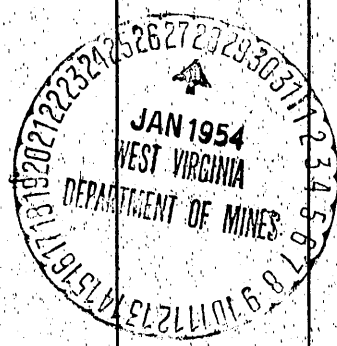
Drilling commenced September 30, 1953
Drilling completed December 20, 1953 Oct. 20, 1953
Date Shot Oct. 28 From 2036 To 2047 2077
With 100 Qts

Open Flow /10ths Water in Inch
/10ths Merc. in Inch
Volume 30 M Cu. Ft.
Rock Pressure 100 lbs. 5 hrs.
Oil bbls., 1st 24 hrs.
Fresh water feet
Salt water feet

CASING CEMENTED SIZE No. Ft. Date

COAL WAS ENCOUNTERED AT FEET INCHES
FEET INCHES FEET INCHES
FEET INCHES FEET INCHES

Formation	Color	Hard or Soft	Top	Bottom	Oil, Gas or Water	Depth Found	Remarks
Clay	Red	Soft	0	15			
Sand	Light	Soft	15	50			
Slate	Black	Soft	50	125			
Red Rock	Red	Soft	125	165			
Lime	White	Hard	165	200			
Slate	Grey	Hard	200	280			
Red Rock	Red	Soft	280	300			
Slate	Black	Soft	300	410			
Red Rock	Red	Soft	410	425			
Slate	Dark	Soft	425	455			
Sand	Light	Hard	455	485			
Slate	Dark	Soft	485	505			
Red Rock	Red	Soft	505	520			
Slate	Dark	Soft	520	540			
Red Rock	Red	Soft	540	650			
Slate	Dark	Hard	650	708			
Red Rock	Red	Soft	708	720			
Slate	Dark	Hard	720	735			
Red Rock	Red	Soft	735	760			
Slate	Dark	Hard	760	800			
Slate	Grey	Soft	800	997			
Sand	Light	Hard	997	1080			
Slate	Grey	Hard	1080	1095			
Lime	Grey	Hard	1095	1105			
Slate	Grey	Hard	1105	1150			
Sand	Light	Hard	1150	1250			
Slate	Black	Hard	1250	1270			
1st S Sand	Grey	Hard	1270	1325			
Slate	Grey	Hard	1325	1350			
2nd S Sand	Grey	Hard	1350	1390			
Slate & Shells	Grey	Hard	1390	1615			
Lime	White	Hard	1615	1650			
3rd Salt Sand	Grey	Hard	1650	1710			
Slate	Black	Hard	1710	1725			
Sand	Light	Hard	1725	1755			
Lime	Grey	Hard	1755	1770			
Sand	Light	Hard	1770	1850			
Slate	Grey	Hard	1850	1855			
Red Rock	Red	Soft	1855	1865			



Formation	Color	Hard or Soft	Top /	Bottom	Oil, Gas or Water	Depth Found	Remarks
Slate	Dark	Soft	1865	1880			
L Lagen	Grey	Hard	1880	1905			
Sand	Light	Hard	1905	1920			
P-Cave	Dark	Hard	1920	1930			
Big Lime	Grey	Hard	1930	2021			
Injun Sand	Grey	Hard	2021	2096	Gas	2036-2047	

Date Jan 25, 1954

APPROVED Lebron Cain, Owner

By Quin

(Title)