

2102357A

Topo Quad: Gilmer 7.5'

Scale: 1" = 2000'

County: Gilmer

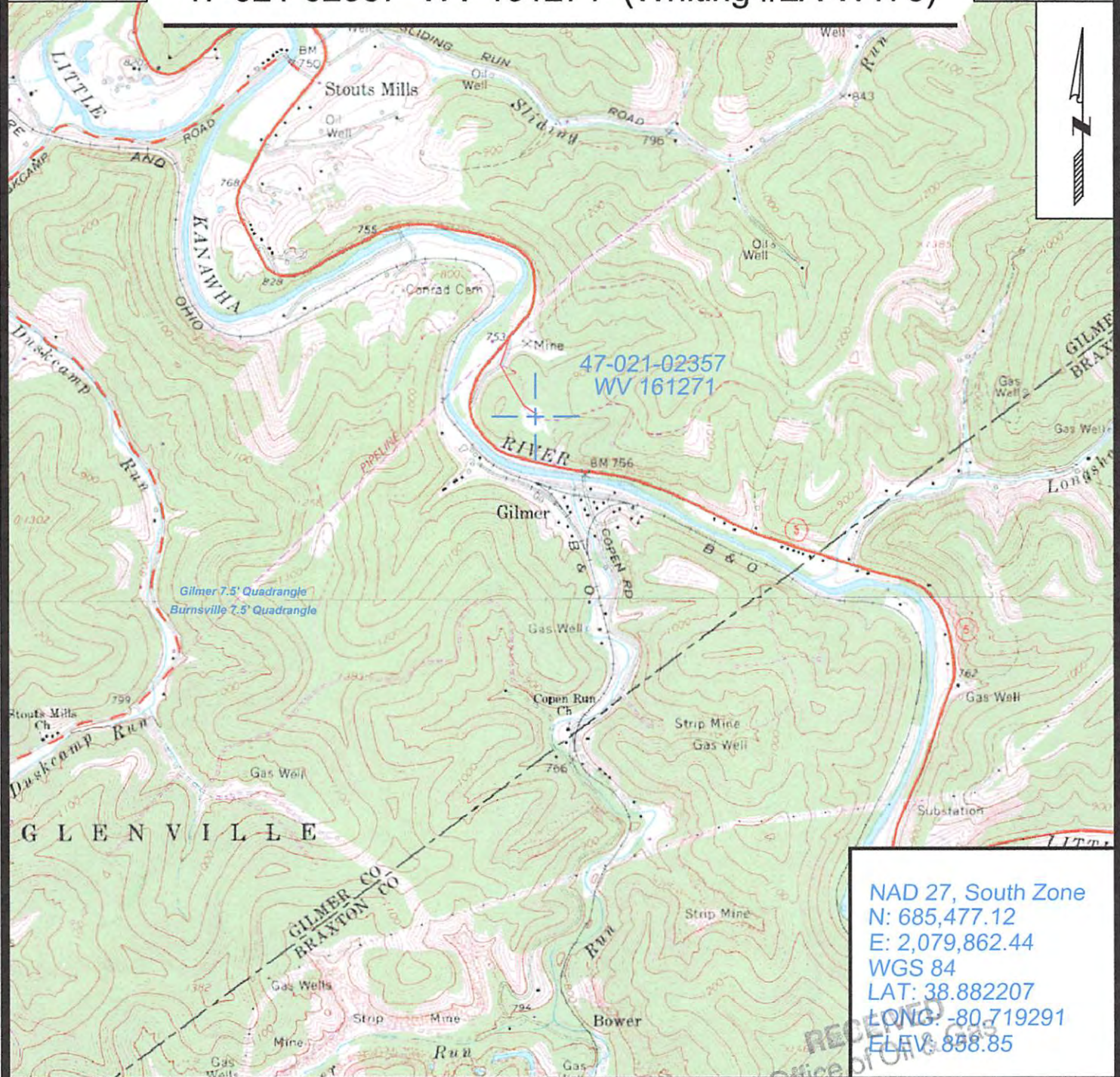
Date: August 22, 2013

District: Glennville

Project No: 25-19-00-07

47-021-02357 WV 161271 (Whiting #2A-W175)

Topo



NAD 27, South Zone
 N: 685,477.12
 E: 2,079,862.44
 WGS 84
 LAT: 38.882207
 LONG: -80.719291
 ELEV: 858.85



SURVEYING AND MAPPING SERVICES PERFORMED BY:
ALLEGHENY SURVEYS, INC.
 1-800-482-8606
 P.O. BOX 438
 BIRCH RIVER, WV 26610
 PH: (304) 649-8606
 FAX: (304) 649-8608

PREPARED FOR:
EQT Production Company
 P.O. Box 280
 Bridgeport, WV 26330

SEP 12 2013
 Environmental Protection