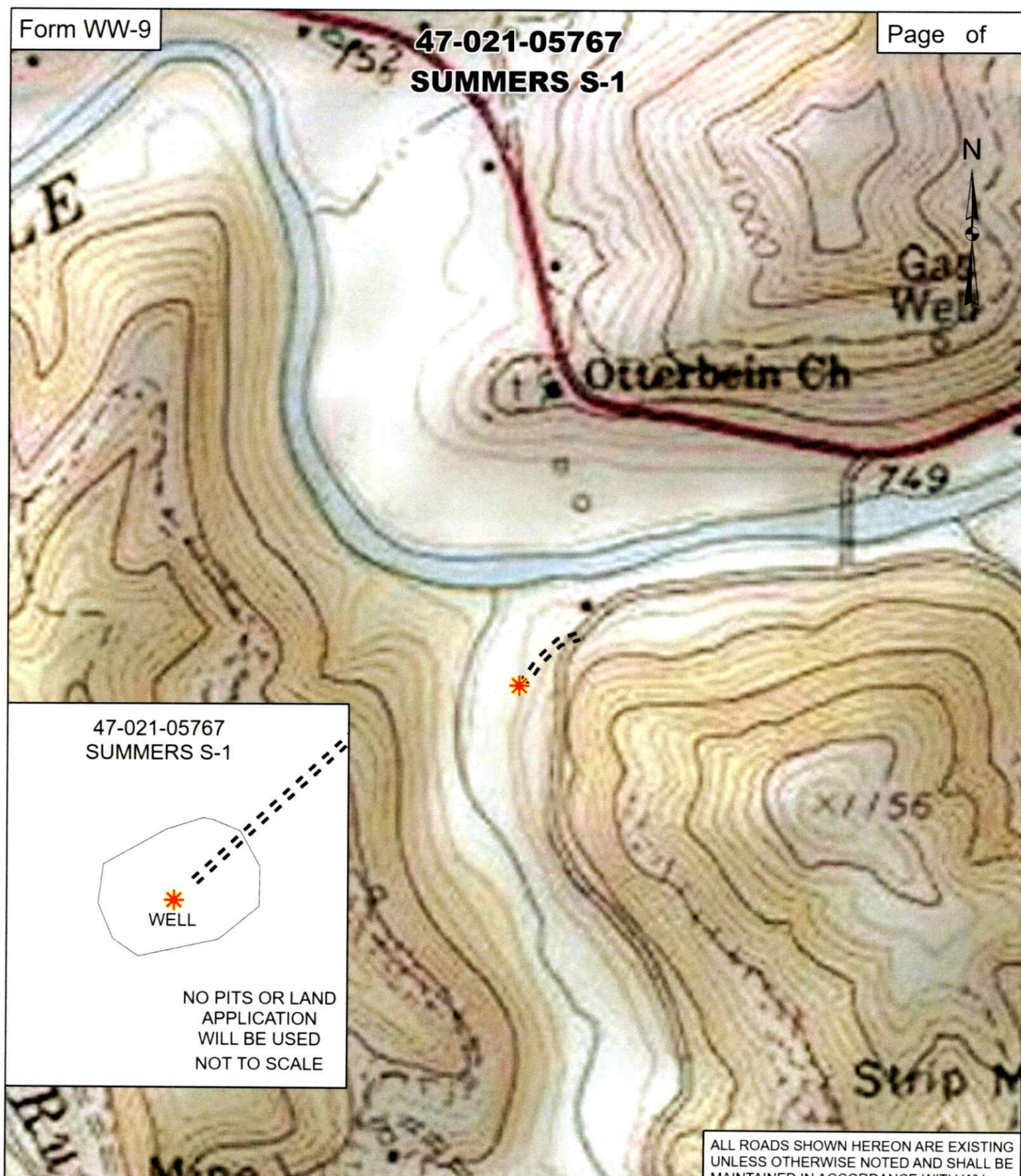


47-021-05767  
SUMMERS S-147-021-05767  
SUMMERS S-1NO PITS OR LAND  
APPLICATION  
WILL BE USED  
NOT TO SCALE**GREYLOCK**  
ENERGY

Greylock Conventional, LLC

500 Corporate Landing Charleston, WV 25311  
304-925-6100 - [www.greylockenergy.com](http://www.greylockenergy.com)

Date: 8/19/2025

0 150 300 600 900 1,200



Feet

1:6,000

TOPO SECTION OF USGS  
GLENVILLE 7.5' QUADRANGLE

ALL ROADS SHOWN HEREON ARE EXISTING  
UNLESS OTHERWISE NOTED AND SHALL BE  
MAINTAINED IN ACCORDANCE WITH WV  
D.E.P. OIL AND GAS BMP MANUAL  
ENTRANCES AT COUNTY/STATE ROADS  
SHALL BE MAINTAINED WITH WV D.O.T.  
REGULATION. SEPARATE PERMITS MAY  
BE REQUIRED BY D.O.T.

EARTHWORK CONTRACTORS ARE  
RESPONSIBLE FOR 100% OF THE  
OPERATOR AND INSPECTOR PRIOR TO ANY  
DEVIATION FROM THIS PLAN.

10/7/2025

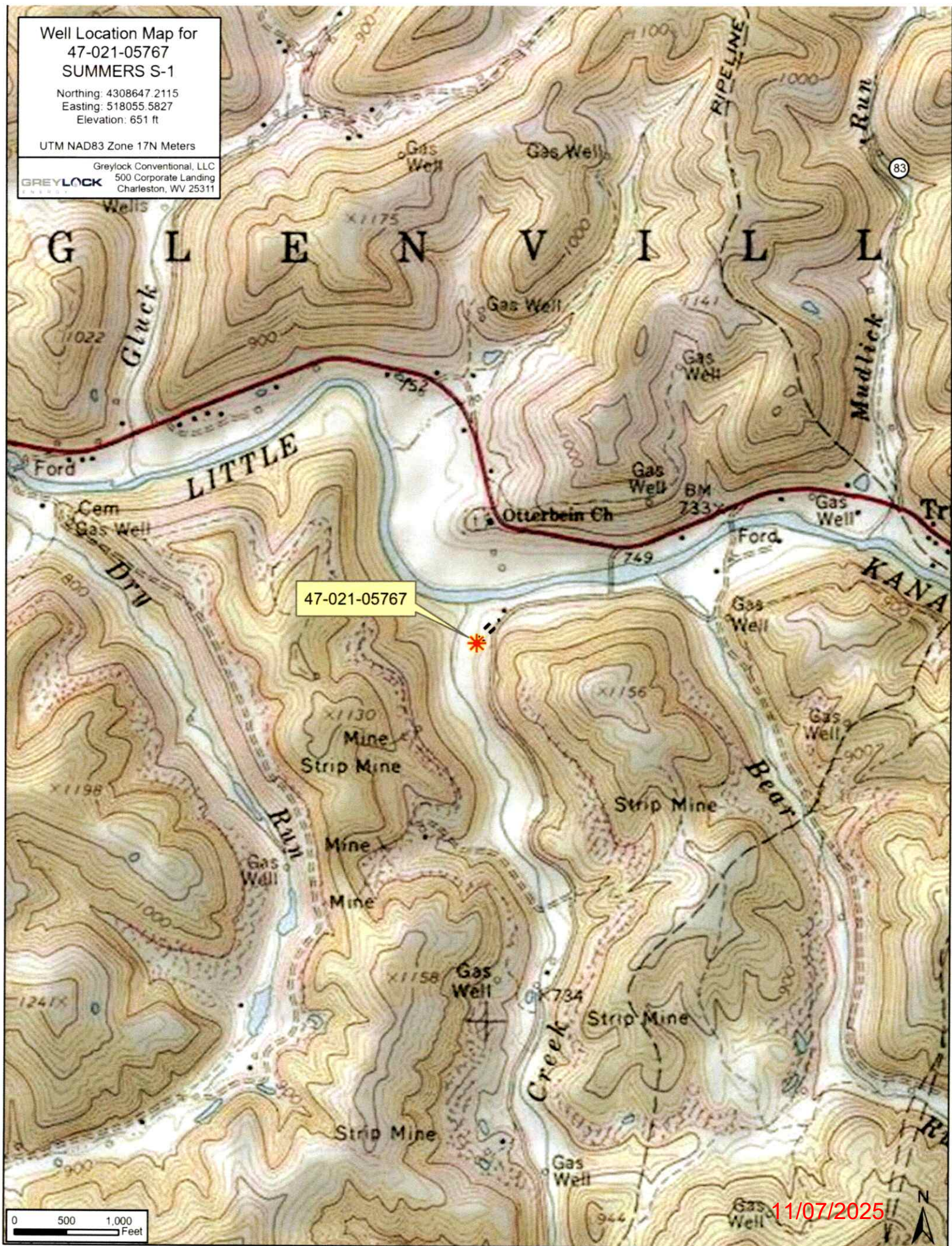


Well Location Map for  
47-021-05767  
SUMMERS S-1

Northing: 4308647.2115  
Easting: 518055.5827  
Elevation: 651 ft

UTM NAD83 Zone 17N Meters

Greylock Conventional, LLC  
500 Corporate Landing  
Charleston, WV 25311





WW-7  
8-30-06



West Virginia Department of Environmental Protection  
Office of Oil and Gas

**WELL LOCATION FORM: GPS**

API: 47-021-05767 WELL NO.: 1

FARM NAME: Summers S-1

RESPONSIBLE PARTY NAME: Greylock Conventional, LLC

COUNTY: Gilmer DISTRICT: Glenville

QUADRANGLE: Glenville

SURFACE OWNER: \_\_\_\_\_

ROYALTY OWNER: \_\_\_\_\_

UTM GPS NORTHING: 4308647.2115

UTM GPS EASTING: 518055.5827 GPS ELEVATION: 651 ft

The Responsible Party named above has chosen to submit GPS coordinates in lieu of preparing a new well location plat for a plugging permit or assigned API number on the above well. The Office of Oil and Gas will not accept GPS coordinates that do not meet the following requirements:

1. Datum: NAD 1983, Zone: 17 North, Coordinate Units: meters, Altitude: height above mean sea level (MSL) – meters.
2. Accuracy to Datum – 3.05 meters
3. Data Collection Method:

Survey grade GPS \_\_\_\_: Post Processed Differential \_\_\_\_

Real-Time Differential \_\_\_\_

Mapping Grade GPS X: Post Processed Differential \_\_\_\_

Real-Time Differential X

4. **Letter size copy of the topography map showing the well location.**

I the undersigned, hereby certify this data is correct to the best of my knowledge and belief and shows all the information required by law and the regulations issued and prescribed by the Office of Oil and Gas.

G: M 24  
Signature

Asset Development Manager

Title

10/10/25

Date

RECEIVED  
Office of Oil and Gas

OCT 27 2025

WV Department of  
Environmental Protection

11/07/2025