

MOUNTAIN V OIL & GAS, INC.
REED LEASE
WELL 1H WV0470

T.H. LATITUDE 38°57'30"
 B.H. LATITUDE 38°57'30"

7,605' T.H. A.D. 6,749' B.H. A.D.

T.H. LONGITUDE 80°52'30"
 B.H. LONGITUDE 80°52'30"

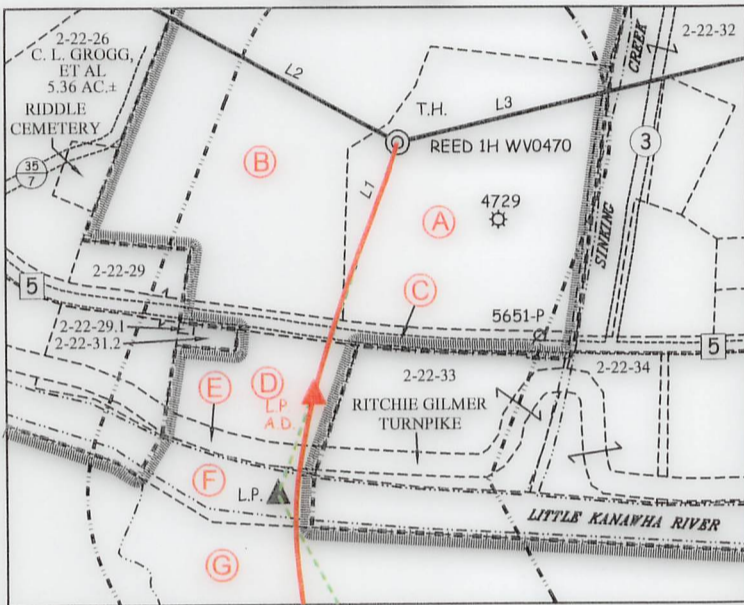
TAG	SURFACE OWNER	PARCEL	ACRES
A	LILLION ONIDEE NUTTER	2-22-57	14.95
B	TERRY J. & MARY E. HECKERT	2-17-22	60.00
C	WV ST. RT. 5	N/A	N/A
D	JACK DELBERT & ELLEN J. MCCUNE	2-22-31	3.06
E	RITCHIE GILMER TURNPIKE	N/A	N/A
F	LITTLE KANAWHA RIVER	N/A	N/A
G	ARBUCKLE RESOURCES GROUP LLC, ET AL	2-22-51	56.00
H	KENNETH ROLLIN GUERIN, ET AL	2-22-50	196.53
I	ARBUCKLE RESOURCES GROUP LLC, ET AL	2-22-53	290.25

(S.P.C. SOUTH ZONE) (UTM(M) ZONE 17 NORTH)

NAD'83 S.P.C.(FT)	N. 711,968.69	E. 1,996,444.33
NAD'83 GEO.	LAT-(N) 38.955098	LONG-(W) 80.901740
NAD'83 UTM (M)	N. 4,311,798.40	E. 508,513.91
LANDING POINT		
NAD'83 S.P.C.(FT)	N. 711,058.8	E. 1,996,125.5
NAD'83 GEO.	LAT-(N) 38.952601	LONG-(W) 80.902864
NAD'83 UTM (M)	N. 4,311,521.2	E. 508,416.8
BOTTOM HOLE		
NAD'83 S.P.C.(FT)	N. 706,662.4	E. 1,998,529.4
NAD'83 GEO.	LAT-(N) 38.940523	LONG-(W) 80.894429
NAD'83 UTM (M)	N. 4,310,181.7	E. 509,149.2

PARCEL	SURFACE ADJOINER	ACRES
2-17-28	ORLEN GLENN HESS, ET AL	32.00
2-17-28.2	MARGARET E. MACKENZIE	24.89
2-22-29	KANAWHA DRIVE CHURCH TRUSTEES	3.00
2-22-29.1	KANAWHA DRIVE CHURCH	0.05
2-2-31.2	KANAWHA DRIVE CHURCH TRUSTEES	0.19
2-22-32	BENJAMIN D. & KAYLA B. STEWART	25.64
2-22-33	JACK DELBERT & ELLEN J. MCCUNE	4.655
2-22-34	DAVID PAUL & DONNA MARIE GOFF	2.64

DETAIL
 SCALE: 1" = 500'



AS DRILLED COORDINATES FOR WELL NO. 1H

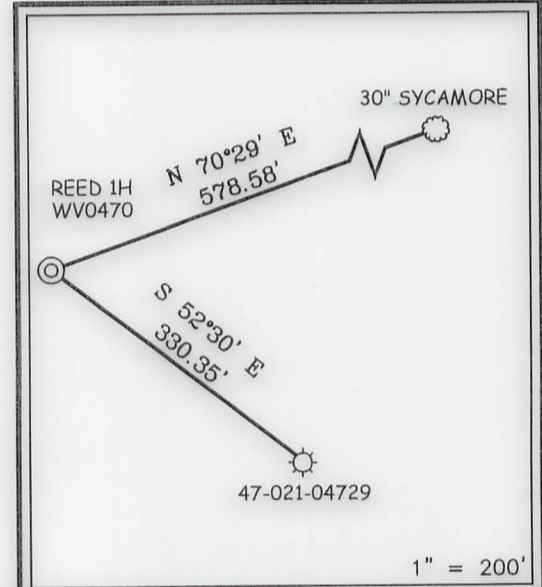
(S.P.C. SOUTH ZONE) (UTM(M) ZONE 17 NORTH)

NAD'83 S.P.C.(FT)	N. 711,968.69	E. 1,996,444.33
NAD'83 GEO.	LAT-(N) 38.955098	LONG-(W) 80.901740
NAD'83 UTM (M)	N. 4,311,798.40	E. 508,513.91
LANDING POINT		
NAD'83 S.P.C.(FT)	N. 711,315.4	E. 1,996,220.0
NAD'83 GEO.	LAT-(N) 38.953305	LONG-(W) 80.902531
NAD'83 UTM (M)	N. 4,311,599.4	E. 508,445.6
BOTTOM HOLE		
NAD'83 S.P.C.(FT)	N. 708,941.0	E. 1,997,303.8
NAD'83 GEO.	LAT-(N) 38.946783	LONG-(W) 80.898729
NAD'83 UTM (M)	N. 4,310,876.0	E. 508,775.8

LEGEND

- AS DRILLED (Red line)
- PROPOSED (Green dashed line)

REFERENCES



NOTES ON SURVEY

- NO WATER WELLS WERE FOUND WITHIN 250' OF PROPOSED GAS WELL REED 1H WV0470.
- WELL SPOT CIRCLE & TOPO MARK SCALE IS 1"=2000'
- AS-DRILLED DATA PROVIDED BY MOUNTAIN V OIL AND GAS
- PLAT UPDATED TO SHOW AS-DRILLED PATH.

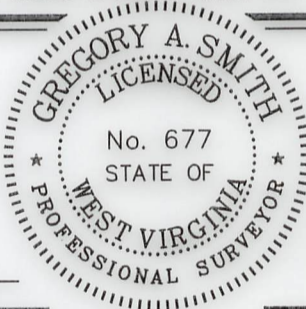


12 Vanhorn Drive | P.O. Box 150 | Glenville, WV 26031 | 304.482.5634
 1412 Kanawha Boulevard, East | Charleston, WV 25301 | 304.346.5892
 254 East Beckley Bypass | Beckley, WV 26001 | 304.285.5296
 slsvw.com

I THE UNDERSIGNED, HEREBY CERTIFY THAT THIS PLAT IS CORRECT TO THE BEST OF MY KNOWLEDGE AND BELIEF AND SHOWS ALL THE INFORMATION REQUIRED BY LAW AND THE REGULATIONS ISSUED AND PRESCRIBED BY THE DIVISION OF ENVIRONMENTAL PROTECTION.

P.S.
 677

Gregory A. Smith



(+) DENOTES LOCATION OF WELL ON UNITED STATES TOPOGRAPHIC MAPS

DATE DECEMBER 21, 20 21

REVISED JUNE 30, 20 22

OPERATORS WELL NO. REED 1H WV0470

API WELL NO. 47 - 021 - 05796
 STATE COUNTY PERMIT

MINIMUM DEGREE OF ACCURACY 1 / 2500 FILE NO. 9093P1HAD.dwg

HORIZONTAL & VERTICAL CONTROL DETERMINED BY: DGPS (SURVEY GRADE TIE TO CORS NETWORK) SCALE 1" = 2000'

STATE OF WEST VIRGINIA
 DIVISION OF ENVIRONMENTAL PROTECTION
 OFFICE OF OIL AND GAS



WELL TYPE: OIL GAS LIQUID INJECTION WASTE DISPOSAL IF "GAS" PRODUCTION STORAGE DEEP SHALLOW

LOCATION: GROUND = 785.10' ELEVATION PROPOSED = 786.30' WATERSHED SINKING CREEK

DISTRICT DEKALB COUNTY GILMER QUADRANGLE TANNER 7.5'

SURFACE OWNER L. ONIDEE NUTTER ACREAGE 15.00±

ROYALTY OWNER L. ONIDEE NUTTER ACREAGE 15.00±

PROPOSED WORK: LEASE NO. SEE WV-6A1

DRILL CONVERT DRILL DEEPER REDRILL FRACTURE OR STIMULATE PLUG OFF OLD FORMATION PERFORATE NEW FORMATION PLUG AND ABANDON CLEAN OUT AND REPLUG OTHER

PHYSICAL CHANGE IN WELL (SPECIFY) WEIR TARGET FORMATION WEIR

ESTIMATED DEPTH TVD: 2,000' / TMD: 7,974.78'

WELL OPERATOR MOUNTAIN V OIL AND GAS INC. DESIGNATED AGENT MIKE SHAVER
 ADDRESS P.O. BOX 470 BRIDGEPORT, WV 26330 ADDRESS P.O. BOX 470 BRIDGEPORT, WV 26330

COUNTY NAME PERMIT

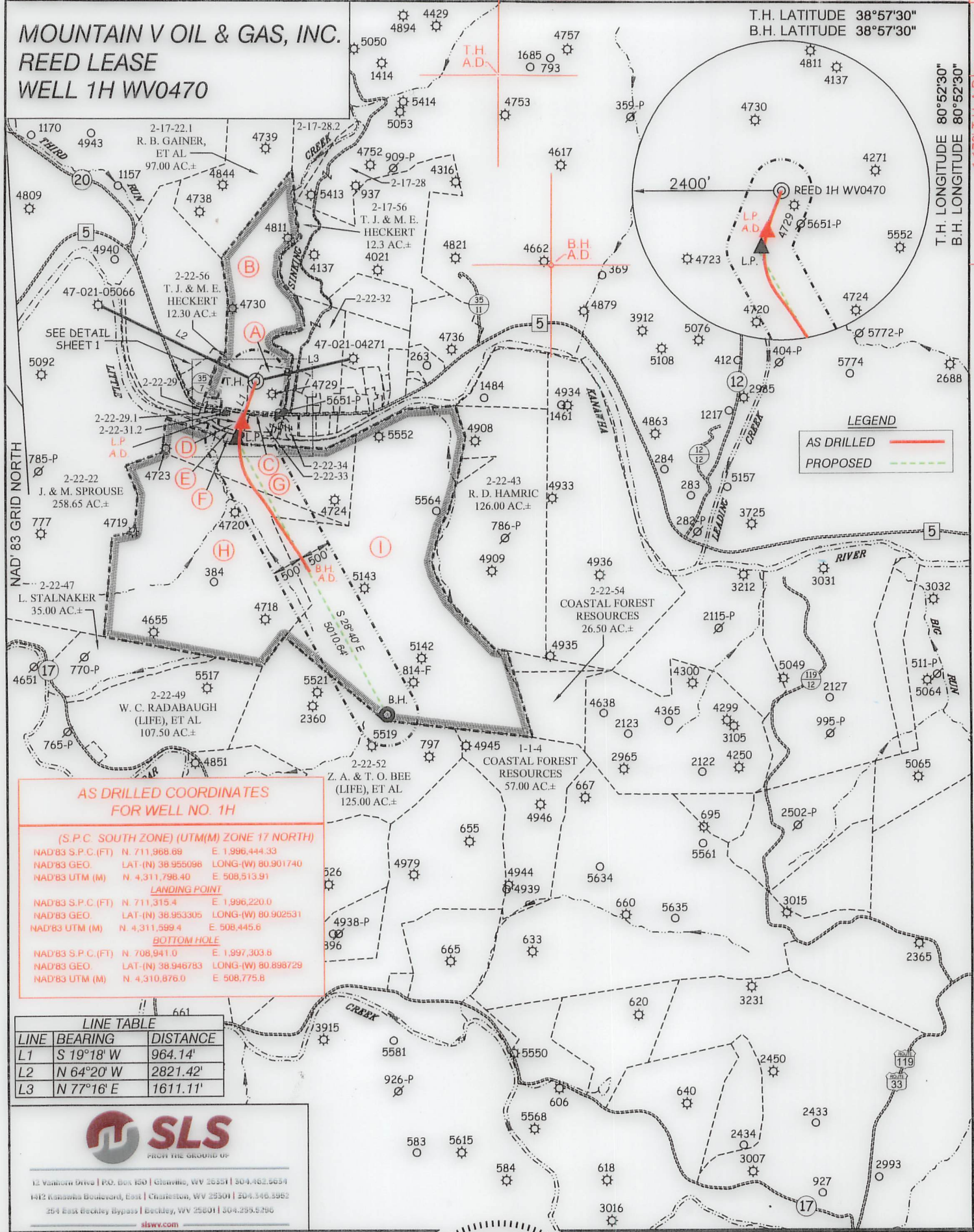
03/17/2023

**MOUNTAIN V OIL & GAS, INC.
REED LEASE
WELL 1H WV0470**

7,605' T.H.A.D. 6,749' B.H.A.D.

T.H. LATITUDE 38°57'30"
B.H. LATITUDE 38°57'30"

T.H. LONGITUDE 80°52'30"
B.H. LONGITUDE 80°52'30"



LEGEND

- AS DRILLED (Solid Red Line)
- PROPOSED (Dashed Green Line)

AS DRILLED COORDINATES FOR WELL NO. 1H

(S.P.C. SOUTH ZONE) (UTM(M) ZONE 17 NORTH)

NAD'83 S.P.C.(FT)	N. 711,968.69	E. 1,996,444.33
NAD'83 GEO.	LAT-(N) 38.955098	LONG-(W) 80.901740
NAD'83 UTM (M)	N. 4,311,798.40	E. 508,513.91

LANDING POINT

NAD'83 S.P.C.(FT)	N. 711,315.4	E. 1,996,220.0
NAD'83 GEO.	LAT-(N) 38.953305	LONG-(W) 80.902531
NAD'83 UTM (M)	N. 4,311,599.4	E. 508,445.6

BOTTOM HOLE

NAD'83 S.P.C.(FT)	N. 708,941.0	E. 1,997,303.8
NAD'83 GEO.	LAT-(N) 38.946783	LONG-(W) 80.898729
NAD'83 UTM (M)	N. 4,310,876.0	E. 508,775.8

LINE TABLE

LINE	BEARING	DISTANCE
L1	S 19°18' W	964.14'
L2	N 64°20' W	2821.42'
L3	N 77°16' E	1611.11'

12 Vanhook Drive | P.O. Box 150 | Glenville, WV 26031 | 304.462.5634
1412 Kanawha Boulevard, East | Charleston, WV 25301 | 204.346.5952
254 East Beckley Bypass | Beckley, WV 25801 | 304.295.5196
slsww.com

(S.P.C. SOUTH ZONE) (UTM(M) ZONE 17 NORTH)

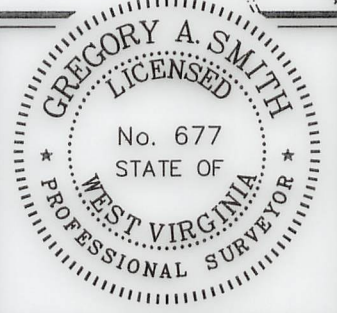
NAD'83 S.P.C.(FT)	N. 711,968.69	E. 1,996,444.33
NAD'83 GEO.	LAT-(N) 38.955098	LONG-(W) 80.901740
NAD'83 UTM (M)	N. 4,311,798.40	E. 508,513.91

LANDING POINT

NAD'83 S.P.C.(FT)	N. 711,058.8	E. 1,996,125.5
NAD'83 GEO.	LAT-(N) 38.952601	LONG-(W) 80.902864
NAD'83 UTM (M)	N. 4,311,521.2	E. 508,416.8

BOTTOM HOLE

NAD'83 S.P.C.(FT)	N. 706,662.4	E. 1,998,529.4
NAD'83 GEO.	LAT-(N) 38.940523	LONG-(W) 80.894429
NAD'83 UTM (M)	N. 4,310,181.7	E. 509,149.2



(+) DENOTES LOCATION OF WELL ON UNITED STATES TOPOGRAPHIC MAPS

P.S. 677 *Gregory A. Smith*

LEGEND

- LEASE LINE (Dashed Line)
- SURFACE LINE (Dotted Line)
- WELL LATERAL (Dashed Line with Circles)
- OFFSET LINE (Dashed Line)
- TIE LINE (Dashed Line)
- CREEK (Wavy Line)
- ROAD (Double Line)
- COUNTY ROUTE (Line with 'R')
- PROPOSED WELL (Dashed Green Line)
- EXISTING WELL (Solid Red Line)
- PERMITTED WELL (Dashed Green Line with Circle)
- TAX MAP-PARCEL (Dotted Line)
- SURFACE OWNER (SEE TABLE) (Circle with 'O')
- LEASE # (SEE WW-6A1) (Circle with 'A')

SCALE 1" = 2000' FILE NO. 9093P1HAD.dwg

DATE DECEMBER 21, 20 21
REVISED JUNE 30, 20 22

OPERATORS WELL NO. REED 1H WV0470
API WELL NO. 47-021-05796

NO.	STATE	COUNTY	PERMIT
-----	-------	--------	--------

STATE OF WEST VIRGINIA
DIVISION OF ENVIRONMENTAL PROTECTION
OFFICE OF OIL AND GAS

WELL OPERATOR MOUNTAIN V OIL AND GAS INC.	DESIGNATED AGENT MIKE SHAVER
ADDRESS P.O. BOX 470 BRIDGEPORT, WV 26330	ADDRESS P.O. BOX 470 BRIDGEPORT, WV 26330

03/17/2023

COUNTY NAME PERMIT