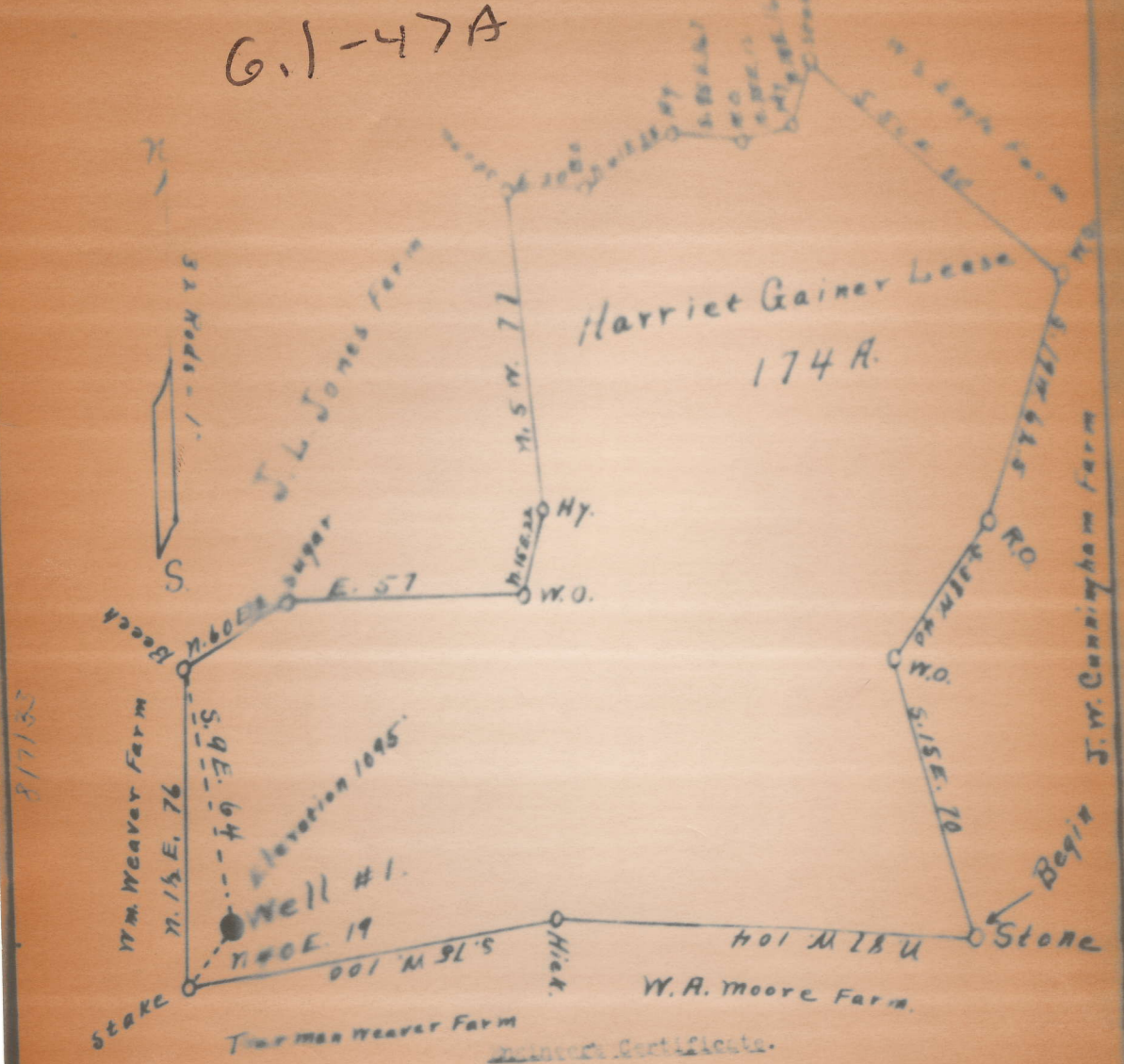




~~G.1-47A~~ NOT LOCATED

G.1-47A



Surveyor's Certificate.

I, the undersigned, hereby certify that this Map is correct and shows all the information to the best of my knowledge and belief, required by the oil and gas section of the Mining Laws of West Virginia.

*Geo. V. Cooper*

Name	Color	Character	Oil, Gas or Water	Top	Bottom	Thickness	Total Depth	Remarks
red rock		soft		0	20			
shale & shells				20	440			
sand		hard		440	480			
lime	red	hard		480	540			
sand		"		540	600			
red rock		soft		600	690			
shale		soft		690	697			
red rock		"		697	620			
1st Pittsburg sand		hard	oil water	620	655			
slate		soft		655	657			
2nd Pittsburg sand		hard		657	708			
slate		soft		708	795			
sand		hard		795	845			
shale		soft		845	895			
sand		hard		895	888			
red rock		soft		888	898			
slate		"		898	928			
red rock		"		928	940			
slate		"		940	952			
Little Luncard sand		hard		952	986			
shale		soft		986	1030			
slate		"		1030	1045			
lime		hard		1045	1065			
red rock		soft		1065	1105			
big Luncard sand		hard		1105	1170			
slate		soft		1170	1270			
was sand		hard		1270	1318			
shale		soft		1318	1370			
sand		hard		1370	1410			
shale		soft		1410	1438			
sand		hard		1438	1535			
shale		soft		1535	1590			
sand		hard		1590	1690			
black shale		soft		1690	1740			
lime		hard		1740	1750			
black shale		soft		1750	1794			
lime		hard		1794	1797			
black shale		soft		1797	1809			
salt sand	white	hard	was	1809				
salt sand		steel line	masurment	1797	1840	total depth		1913-2" feet.

shot  
Well was not shot at 1809 to 1809 feet; well was shot at \_\_\_\_\_ feet.

o4b salt  
Fresh water at \_\_\_\_\_ feet; fresh water at \_\_\_\_\_ feet.

producing Estimated 10 Bls., oil- 300,000 gas-  
Well was *dry* hole. the needy oil corporation

July 17, 1936 BY *AIMA*

WEST VIRGINIA DEPARTMENT OF MINES

OIL AND GAS DIVISION

PRELIMINARY DATA SHEET No. 1

oil 47-A

File No. \_\_\_\_\_ Well No. 1  
Gaines Farm Oil & Gas Company, of Bridgeport W Va  
on the Harriett Gaines Farm

containing 177 acres. Location  
Depot District, in Gilmer County, West Virginia

The surface of the above tract is owned in fee by Gal Hinzman  
of James W Va address, and the mineral rights are owned by  
Gal Hinzman, James W Va

The oil and gas privileges are held under lease by the above named company, and this well is drilled under permit  
No. \_\_\_\_\_ issued by the West Virginia Department of Mines, Oil and Gas Division  
Drilled in 1883

Elevation of surface at top of well, \_\_\_\_\_

The number of feet of the different sized casings used in the well.

feet	size	Weight	depth
1913	2 in. Taper	steel	top
1587	6 3/8	steel	top
	galvanized	iron	top
	galvanized	iron	top
	is casing perforated at		feet to
	is casing perforated at		feet to

Coal was encountered at 118 ft. thickness \_\_\_\_\_ inches, and at \_\_\_\_\_ feet, thickness \_\_\_\_\_ inches, and at \_\_\_\_\_ feet, thickness \_\_\_\_\_ inches

Liners were used as follows: (Give details)

Aug 4-33

Date \_\_\_\_\_  
Approved \_\_\_\_\_  
Gaines Farm Oil & Gas Co

