

Company	South Penn Oil Co.
Address	411 Seventh Ave., Pittsburgh, Pa.
Farm	W.H. Ayers
Tract	Acres 136 Lease No. 73668
Well (Farm) No.	2 Serial No.
Quadrangle	Harrisville
County	Gilmer
District	DeKalb
Engineer	E.C. Tabler
Engineer's Registration No.	
File No.	Drawing No.
Date	Jan. 5, 1938 Scale 1"-400'

STATE OF WEST VIRGINIA
 Department of Mines
 OIL AND GAS DIVISION
 CHARLESTON

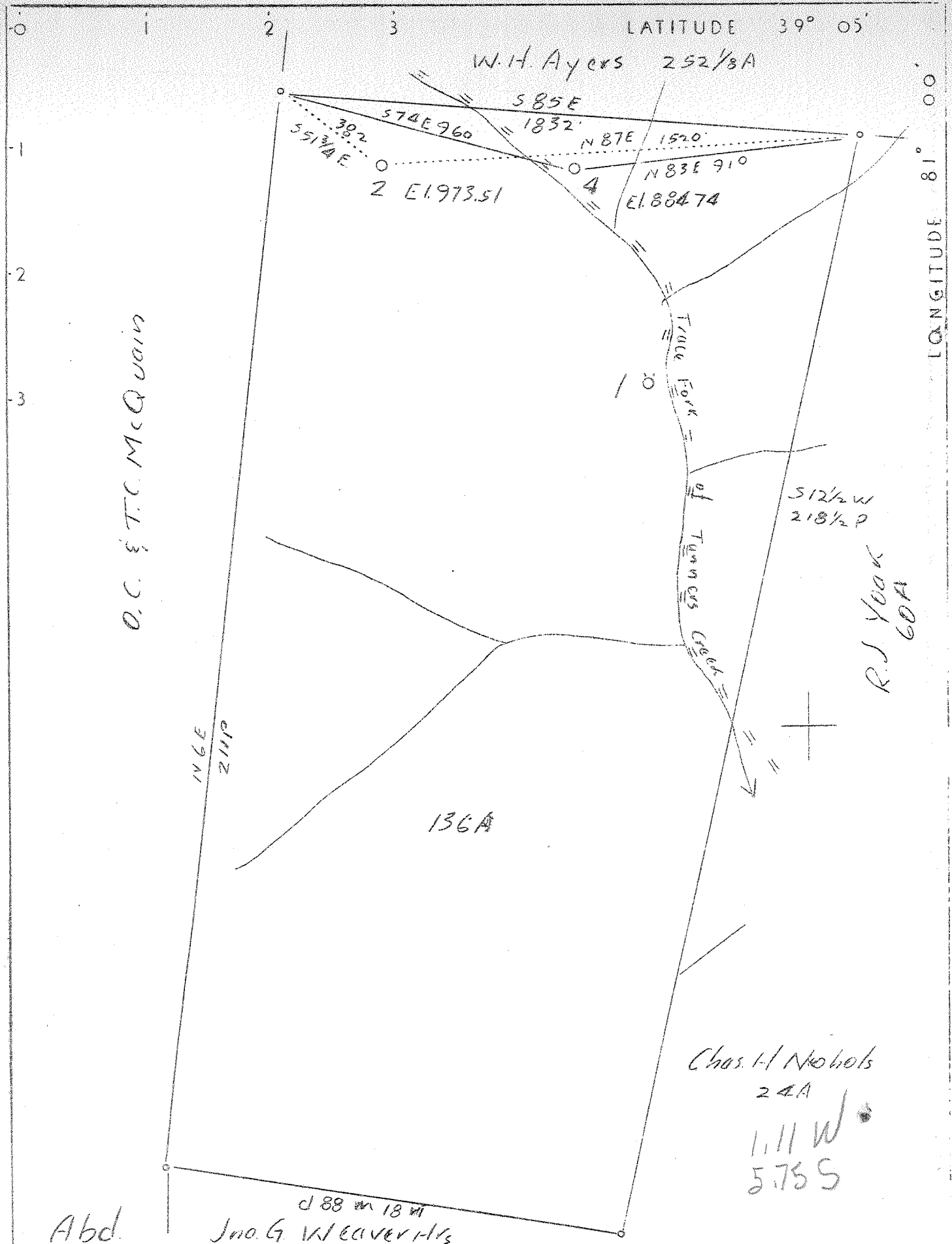
W E L L L O C A T I O N M A P
 File No. 716-104

+ Denotes location of well on United States Topographic Maps, scale 1 to 62,500, latitude and longitude lines being represented by border lines as shown.

- Denotes one inch spaces on border line of original tracing.

100-A
 24 3/4
 105A

M



Company	South Penn Oil Co.
Address	411 Seventh Ave., Pittsburgh, Pa.
Farm	W.H. Ayers
Tract	Acres 136 Lease No. 73668
Well (Farm) No.	2 Serial No.
Quadrangle	Harrisville
County	Gilmer
District	DeKalb
Engineer	E.C. Tabler
Engineer's Registration No.	
File No.	Drawing No.
Date	Jan. 5, 1938 Scale 1"=400'

STATE OF WEST VIRGINIA
 Department of Mines
 OIL AND GAS DIVISION
 CHARLESTON

105-A

WELL LOCATION MAP
 File No. 914-104A

+ Denotes location of well on United States Topographic Maps, scale 1 to 62,500, latitude and longitude lines being represented by border lines as shown.

- Denotes one inch spaces on border line of original tracing.