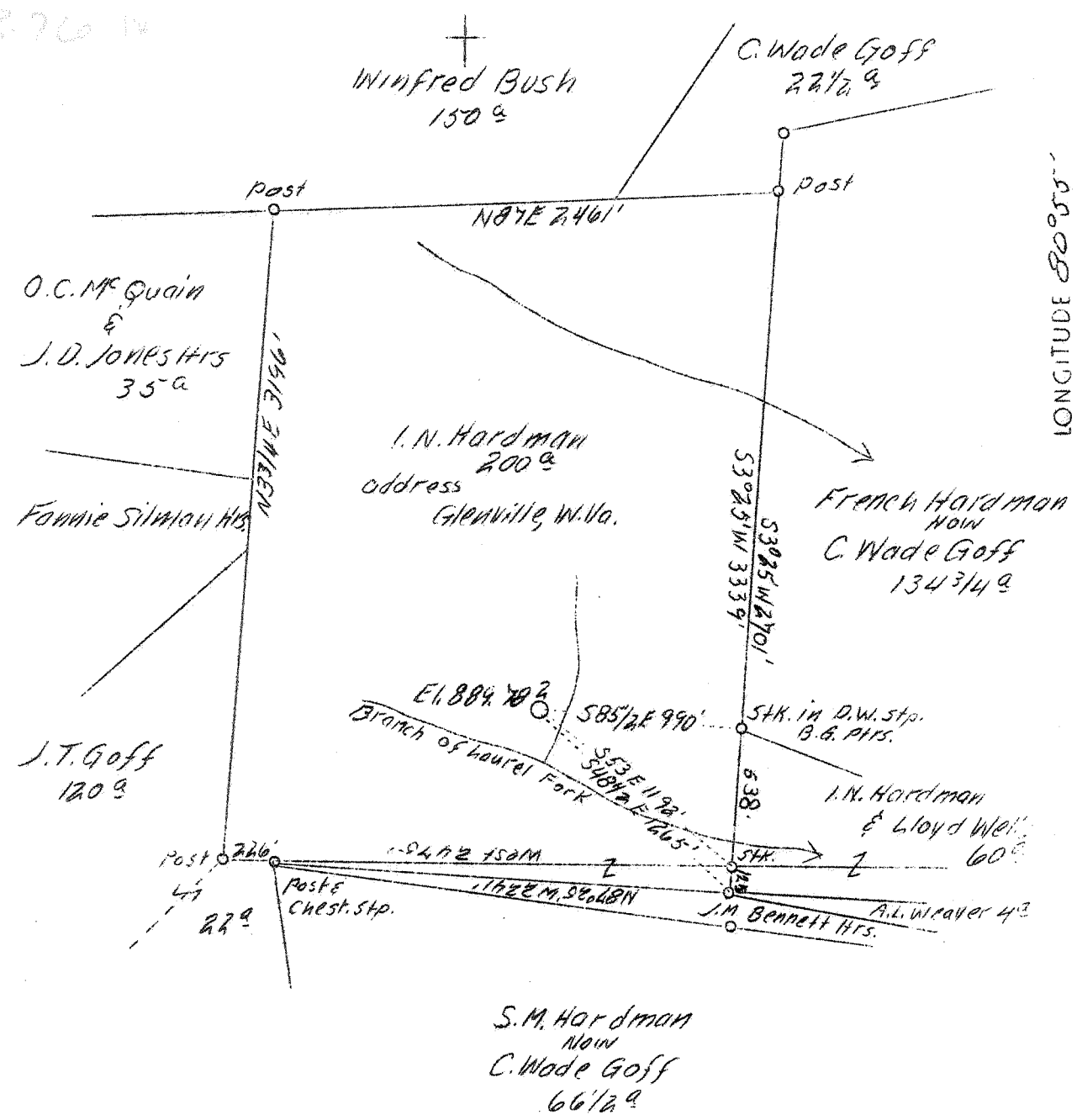


7M

LATITUDE 39°00'

.835
376 14



LONGITUDE 80°55'

S-0.87
W-3.80

No Coal
H.B.D.

Company	South Penn Oil Co.	STATE OF WEST VIRGINIA Department of Mines OIL & GAS DIVISION Charleston WELL LOCATION MAP File No. <u>Gil-175-A</u> x Denotes location of well on U. S. Topographic Maps, scale 1 to 62,500, latitude and longitude lines being represented by border lines as shown. - Denotes one inch spaces on border line of original tracing.
Address	411 - 7th Avenue Pittsburgh, Pa.	
Farm	I. N. Hardman	
Acres	200	
Lease No.	73676 73677	
Well (Farm) No.	2	
Elevation (SL)	889.78	
Quadrangle/NW	Glenville	
County	Gilmer	
District	Dekalb	
Engineer	E. C. Tabler	
Eng. Reg. No.	-	
Date	August 2, 1939	
Scale	1" - 800'	

Dekalb District, Gilmer County, W. Va.

By South Penn Oil Co., 411 Seventh Ave., Pittsburgh, Pa.

Abandoned under permit Gil.....-A. 125-A

On 200 acres, on Laurel Fork of Tanner Fork.

Elevation, 889.78' L.

Surface owned by I. N. Hardman, Glenville, W. Va., and minerals by
I. N. Hardman et al., Glenville, W. Va.

Drilling commenced April 14, 1919; completed, May 29, 1919.

Shot June 2, 1919, at 1948-1958'; shot June 11, 1919, in Injun;
shot Aug. 14, 1922, in Injun.

Oil, $3\frac{1}{2}$ bbls., 1st 24 hrs.

10" casing, 132' (pulled); $8\frac{1}{2}$ " , 930' (pulled); $6\frac{5}{8}$ " , 1775'.

Oil well. Abandonment reported to Dept. of Mines August 14, 1939.

Record to RCT from Mrs. Griffith August 24, 1939.

	Top.	Bottom.
Little Dunkard Sand	870	- 983
Big Dunkard Sand	1030	- 1075
1st Salt Sand	1180	- 1280
2nd Salt Sand	1320	- 1387
3rd Salt Sand	1447	- 1554
Maxton Sand	1610	- 1630
Little Lime	1732	- 1747
Pencil Cave	1747	- 1770
Big Lime	1770	- 1821
Big Injun Sand (gas, 1824-1832'; oil, 1950-1958')	1821	- 1958
Total depth		1965

STATE OF WEST VIRGINIA
DEPARTMENT OF MINES
OIL AND GAS DIVISION

231

WELL RECORD

Abund
Permit No. 411-125-272-A

Oil or Gas Well OIL
(Kind)

Company South Penn Oil Company
 Address 411 Seventh Ave., Pittsburgh, Pa.
 Farm I. N. Hardman Acres 200
 Location (waters) Laurel Fork of Tanners Fork
 Well No. 2 Ele. 899.78'
 District DeKalb County Gilmer
 The surface of tract is owned in fee by I. N. Hardman
Glenville, W. Va.
 Mineral rights are owned by I. N. Hardman et al
Glenville, W. Va.
 Drilling commenced Apr. 14, 1919
 Drilling completed May 29, 1919
 Date shot 6-2-19 Depth of shot 1948-1958
8-11-19 in Jun
8-14-22 in Jun
 Open Flow --- /10ths Water in --- Inch
--- /10ths Merc. in --- Inch
 Volume --- Cu. Ft.
 Rock Pressure --- lbs. --- hrs.
 Oil 3-1/2 bbls., 1st 24 hrs.
 Fresh water --- feet --- feet
 Salt water --- feet --- feet

Casing and Tubing	Used in Drilling	Left in Well	Packers
Size			Kind of Packer <u>---</u>
16			<u>---</u>
13			<u>---</u>
10	<u>132 (Pulled)</u>		Size of <u>---</u>
8 1/4	<u>930 (Pulled)</u>		<u>---</u>
6 5/8	<u>1775</u>		Depth set <u>---</u>
5 3/16			<u>---</u>
3			Perf. top <u>---</u>
2			Perf. bottom <u>---</u>
Liners Used			Perf. top <u>---</u>
			Perf. bottom <u>---</u>
CASING CEMENTED <u>---</u> SIZE <u>---</u> No. Ft. <u>---</u> Date <u>---</u>			
COAL WAS ENCOUNTERED AT <u>---</u> FEET <u>---</u> INCHES			
<u>---</u> FEET <u>---</u> INCHES <u>---</u> FEET <u>---</u> INCHES			
<u>---</u> FEET <u>---</u> INCHES <u>---</u> FEET <u>---</u> INCHES			

Formation	Color	Hard or Soft	Top	Bottom	Oil, Gas or Water	Depth Found	Remarks
Little Dunkard Sand			870	983			
Big Dunkard Sand			1030	1075			
1st Salt Sand			1180	1280			
2nd Salt Sand			1320	1387			
3rd Salt Sand			1447	1554			
Maxon Sand			1610	1630			
Little Lime			1732	1747			
Pencil Cave			1747	1770			
Big Lime			1770	1821			
Big Injun Sand			1821	1958			
					Gas	1824-1832	
					Oil	1950-1958	
Total Depth				1965			



