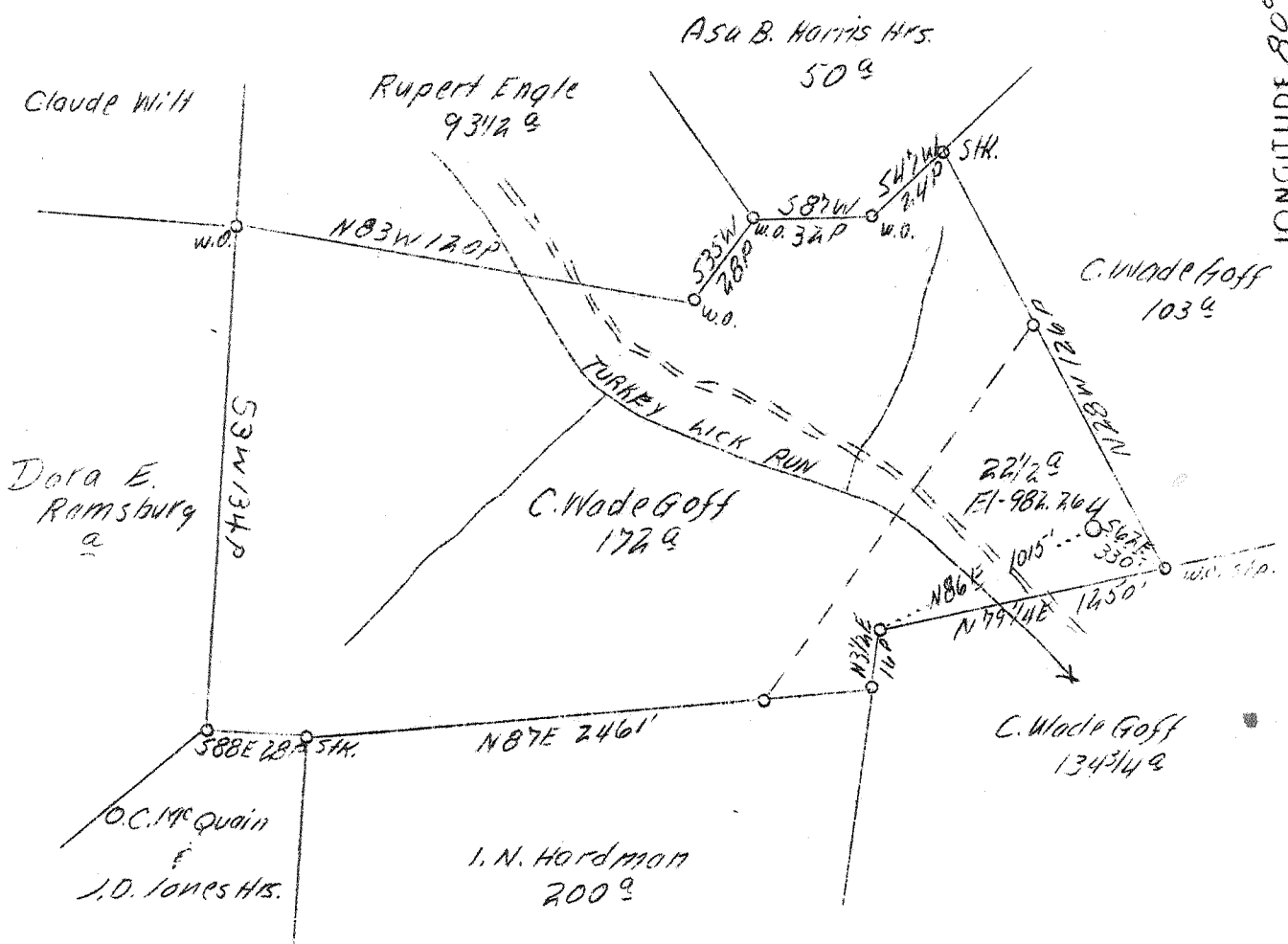


MM

LATITUDE 39° 00'

32 E
3.30 W

LONGITUDE 80° 55'



Surface!
 C. Wade Goff
 Eyo, W. Va.
 Ritchie Co.
 No Coal

S-0.33
 W-3.35

ABD.

Company	South Penn Oil Co.
Address	411 - 7th Avenue, Pgh. Pa.
Farm	C. Wade Goff
Acres	172-1/2
Lease No.	73675
Well (Farm) No.	4
Elevation (SL)	982.26
Quadrangle NW	Glenville
County	Gilmer
District	DeKalb
Engineer	E. C. Tabler
Eng. Reg. No.	-
Date	August 2, 1939
Scale	1" - 800'

STATE OF WEST VIRGINIA
 Department of Mines
 OIL & GAS DIVISION
 Charleston

WELL LOCATION MAP

File No. G11-120-A

x Denotes location of well on U. S. Topographic Maps, scale 1 to 62,500, latitude and longitude lines being represented by border lines as shown.

- Denotes one inch spaces on border line of original tracing.

DeKalb District, Gilmer County, W. Va.

By South Penn Oil Co., 411 Seventh Ave., Pittsburgh, Pa.

Abandoned under permit Gil-.....A.

On 172 $\frac{1}{2}$ acres, on Turkey Lick Run of Laurel Fork.

Elevation, 982.26' L.

Surface owned by C. Wade Goff, Iva, W. Va., and minerals by
Hunter M. Bennett et al., Weston, W. Va.

Drilling commenced Jan. 19, 1920; completed, Feb. 6, 1920.

Shot Nov. 28, 1922, at 1798-1810'.

10" casing, 126' (pulled); 8 $\frac{1}{2}$ " , 1050' (pulled); 6 $\frac{5}{8}$ " , 1530'.

Oil well. Abandonment reported to Dept. of Mines August 14, 1939.

Record to RCT from Mrs. Griffith August 24, 1939.

	Top.	Bottom.
Little Dunkard Sand	950	- 987
Big Dunkard Sand	1040	- 1133
Gas Sand	1227	- 1308
1st Salt Sand	1520	- 1608
Morton Sand	1780	- 1810
(gas, 1792-1795'; oil, 1798-1810')		
Total depth		1810

STATE OF WEST VIRGINIA
DEPARTMENT OF MINES
OIL AND GAS DIVISION

230

WELL RECORD

Permit No. *Stand* 911-126-A

Oil or Gas Well OIL
(Kind)

Company South Penn Oil Company
Address 411 Seventh Ave., Pittsburgh, Pa.
Farm C. Wade Goff Acres 172½
Location (waters) Turkey Lick Run of Laurel Fork
Well No. 4 Elev. 982.26'
District DeKalb County Gilmer
The surface of tract is owned in fee by C. Wade Goff
Address Eva, W. Va.
Mineral rights are owned by Hunter M. Bennett et al
Address Weston, W. Va.
Drilling commenced Jan. 19, 1920
Drilling completed Feb. 6, 1920
Date shot 11-28-22 Depth of shot 1798-1810
Open Flow --- /10ths Water in --- Inch
--- /10ths Merc. in --- Inch
Volume --- Cu. Ft.
Rock Pressure --- lbs. --- hrs.
Oil ? bbls., 1st 24 hrs.
Fresh water == feet == feet
Salt water == feet == feet

Casing and Tubing	Used in Drilling	Left in Well	Packers
16			Kind of Packer <u>---</u>
13			<u>---</u>
10	<u>126 (Pulled)</u>		Size of <u>---</u>
8¼	<u>1050 (Pulled)</u>		<u>---</u>
6½	<u>1530</u>		Depth set <u>---</u>
5 3/16			<u>---</u>
3			Perf. top <u>---</u>
2			Perf. bottom <u>---</u>
Liners Used			Perf. top <u>---</u>
			Perf. bottom <u>---</u>

CASING CEMENTED --- SIZE --- No. Ft. --- Date ---

COAL WAS ENCOUNTERED AT --- FEET --- INCHES
--- FEET --- INCHES --- FEET --- INCHES
--- FEET --- INCHES --- FEET --- INCHES

Formation	Color	Hard or Soft	Top	Bottom	Oil, Gas or Water	Depth Found	Remarks
Little Dunkard Sand			950	987			
Big Dunkard Sand			1040	1133			
Gas Sand			1227	1308			
1st Salt Sand			1520	1608			
Maxon Sand			1780	1810			
					Gas	1792-1795	
					Oil	1798-1810	
Total Depth				1810			

