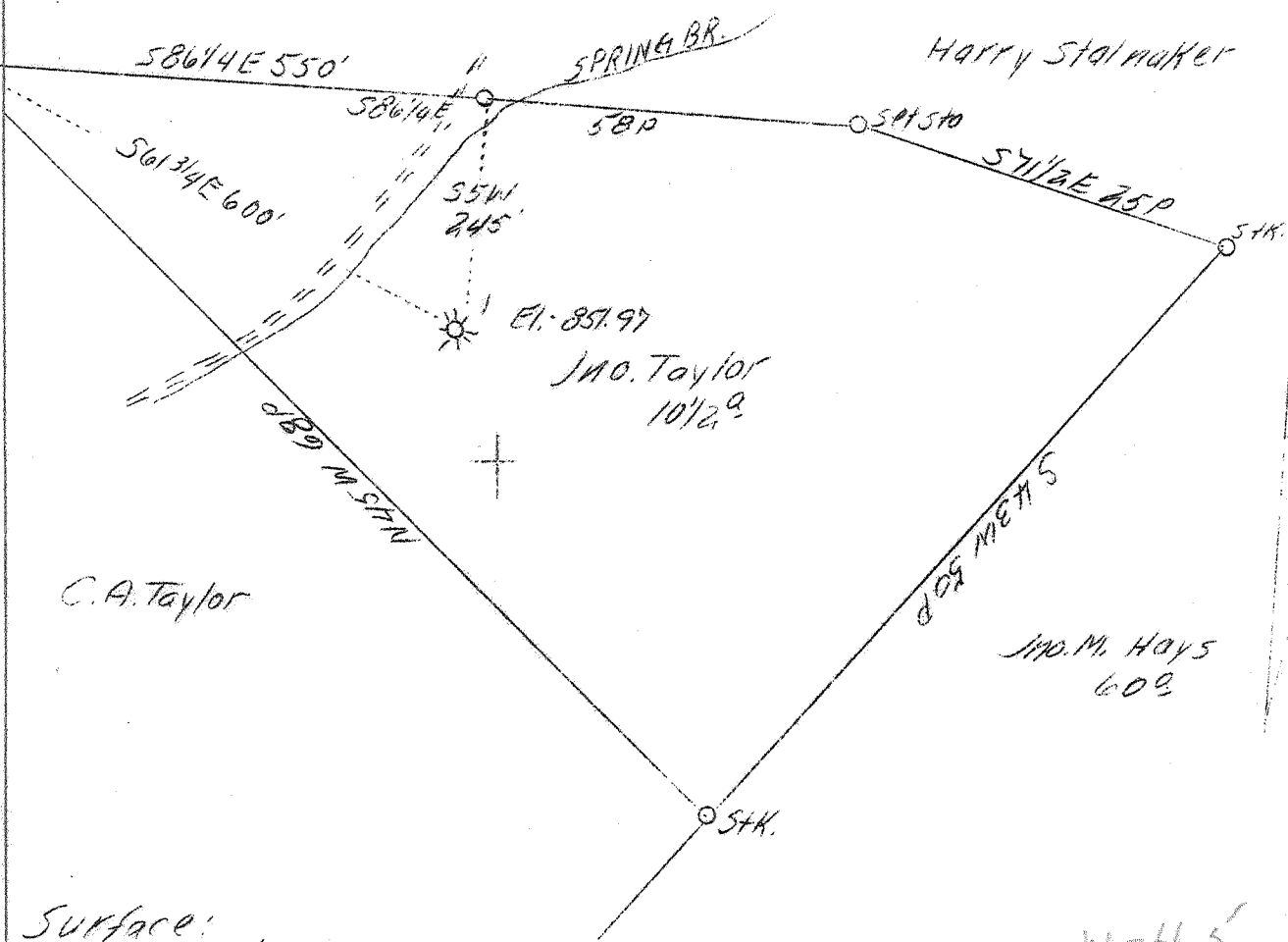


LATITUDE 39° 05'

LONGITUDE 80° 40'

4.23 S  
4.43 W

J. W. Keller Hrs.



Surface:  
James Taylor  
Troy, W. Va.  
Coal  
State of W. Va.

Jno. M. Hoys  
609

N-4.5'  
S-5'

ABD.

Company	South Penn Oil Co.
Address	411 - 7th Avenue Pittsburgh, Pa.
Farm	Jno. Taylor
Acres	11
Lease No.	71684
Well (Farm) No.	1
Elevation (SL)	851.97
Quadrangle	Vadis S.W.
County	Gilmer
District	Troy
Engineer	E. C. Tabler
Eng. Reg. No.	-
Date	July 28, 1939
Scale	1" - 200'

STATE OF WEST VIRGINIA  
Department of Mines  
OIL & GAS DIVISION  
CHARLESTON

Well Location Map

File No. G11-127-A

x Denotes location of well on U. S. Topographic Maps, scale 1 to 62,500, latitude and longitude lines being represented by border lines as shown.

- Denotes one inch spaces on border line of original tracing.