

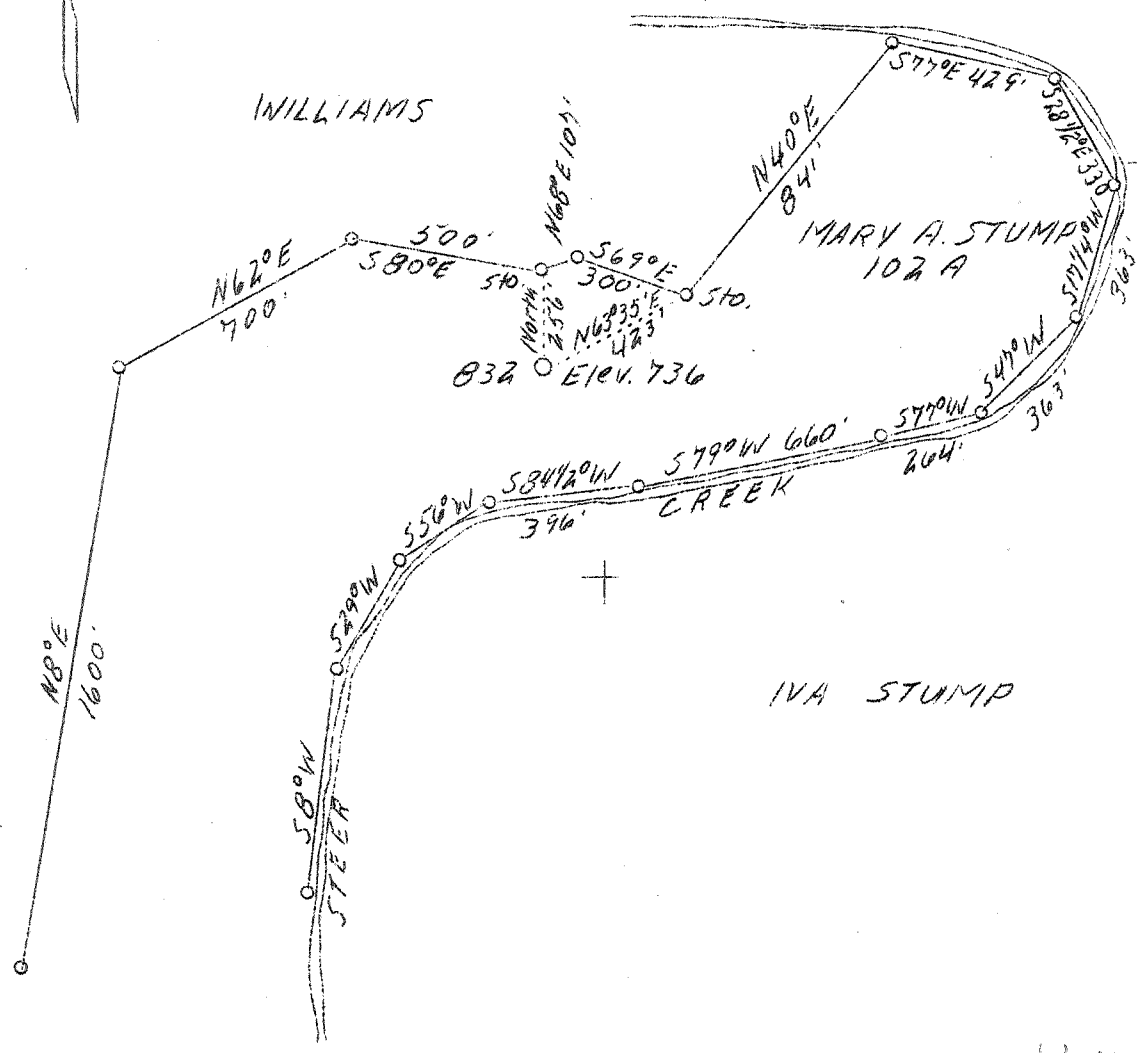
M

LATITUDE 38° 55'

3.695  
3.59 W



LONGITUDE 80° 55'



W - 3.64  
S - 5.78

ADD.

Sheet #

Company	F. S. Deem
Address	Harrisville, W. Va.
Farm	Mary A. Stump
Acres	102
Well (Farm) No.	H.C.R. No. 832
Elevation (SL)	736
Quadrangle	Glenville W.
County	Gilmer
District	Center
Engineer	B. F. Rinehart
Eng. Reg. No.	648
Drawing No.	201-C-G
Date	Sept. 9, 1939
Scale	1" = 500'

STATE OF WEST VIRGINIA  
 Department of Mines  
 OIL & GAS DIVISION  
 Charleston

WELL LOCATION MAP

File No. 611-133-17

x Denotes location of well on U. S. Topographic Maps, scale 1 to 62,500, latitude and longitude lines being represented by border lines as shown.

- Denotes one inch spaces on border line of original tracing.