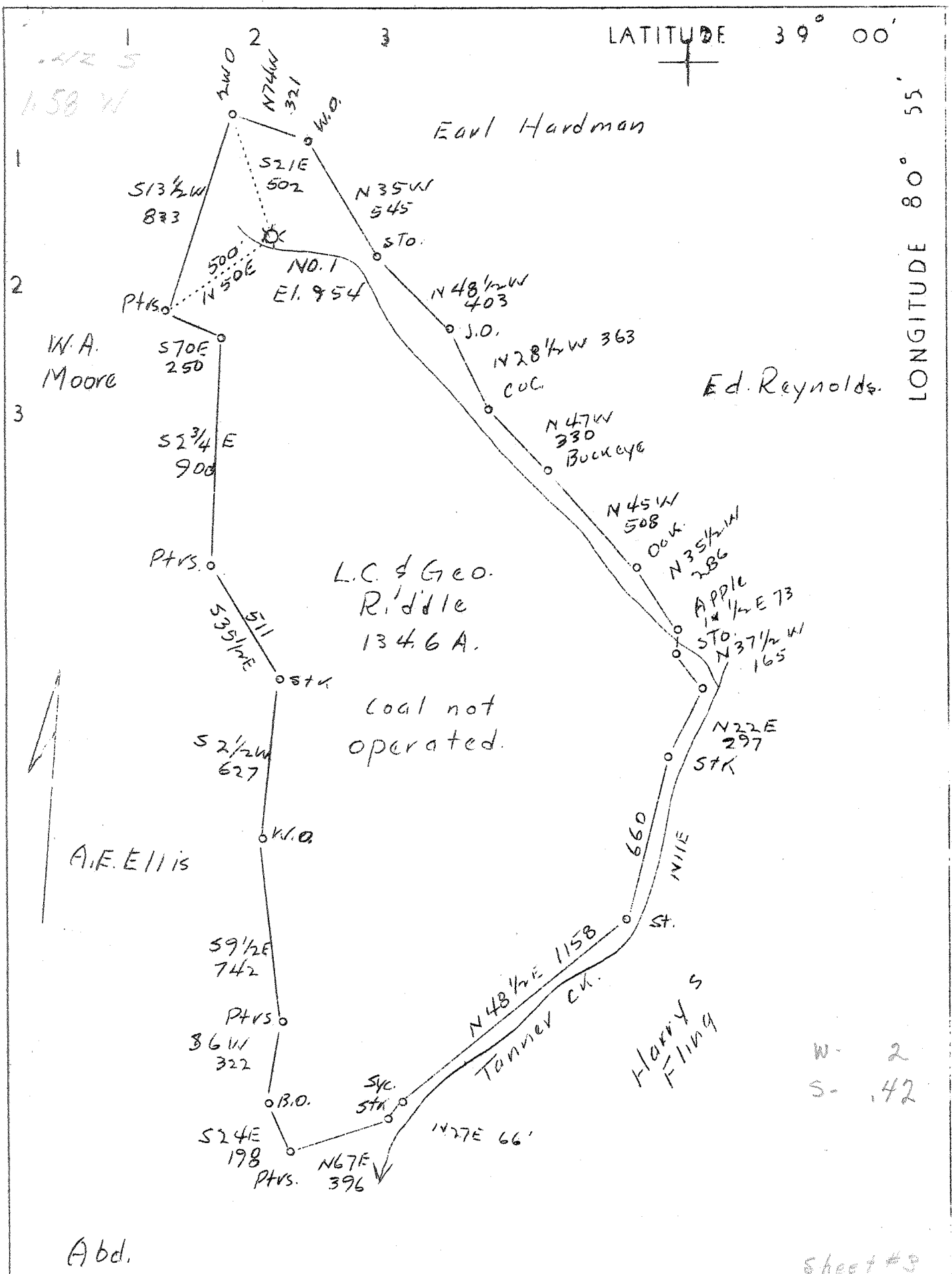


LATITUDE 39° 00'

LONGITUDE 80° 55'



Abd.

W. 2  
S. 42

Sheet #3

Company McCall Drilling Co.  
 Address 612 Keystone Bldg.,  
 Pittsburgh, Pa.  
 Farm L. C. & Geo. B. Riddle  
 Acres 134-6/10  
 Well (Farm) No. 1  
 Serial No. 1-57  
 Elevation (SL) 954  
 Quadrangle Glenville N.W.  
 County Gilmer  
 District DeKalb  
 Engineer C. O. Gerwig  
 Eng. Reg. No. 811  
 Date Sept. 20, 1939  
 Scale 1" - 500'

STATE OF WEST VIRGINIA  
 Department of Mines  
 OIL & GAS DIVISION  
 Charleston

WELL LOCATION MAP

File No. GIL-134A

x Denotes location of well on U. S. Topographic Maps, scale 1 to 62,500, latitude and longitude lines being represented by border lines as shown.  
 - Denotes one inch spaces on border line of original tracing.