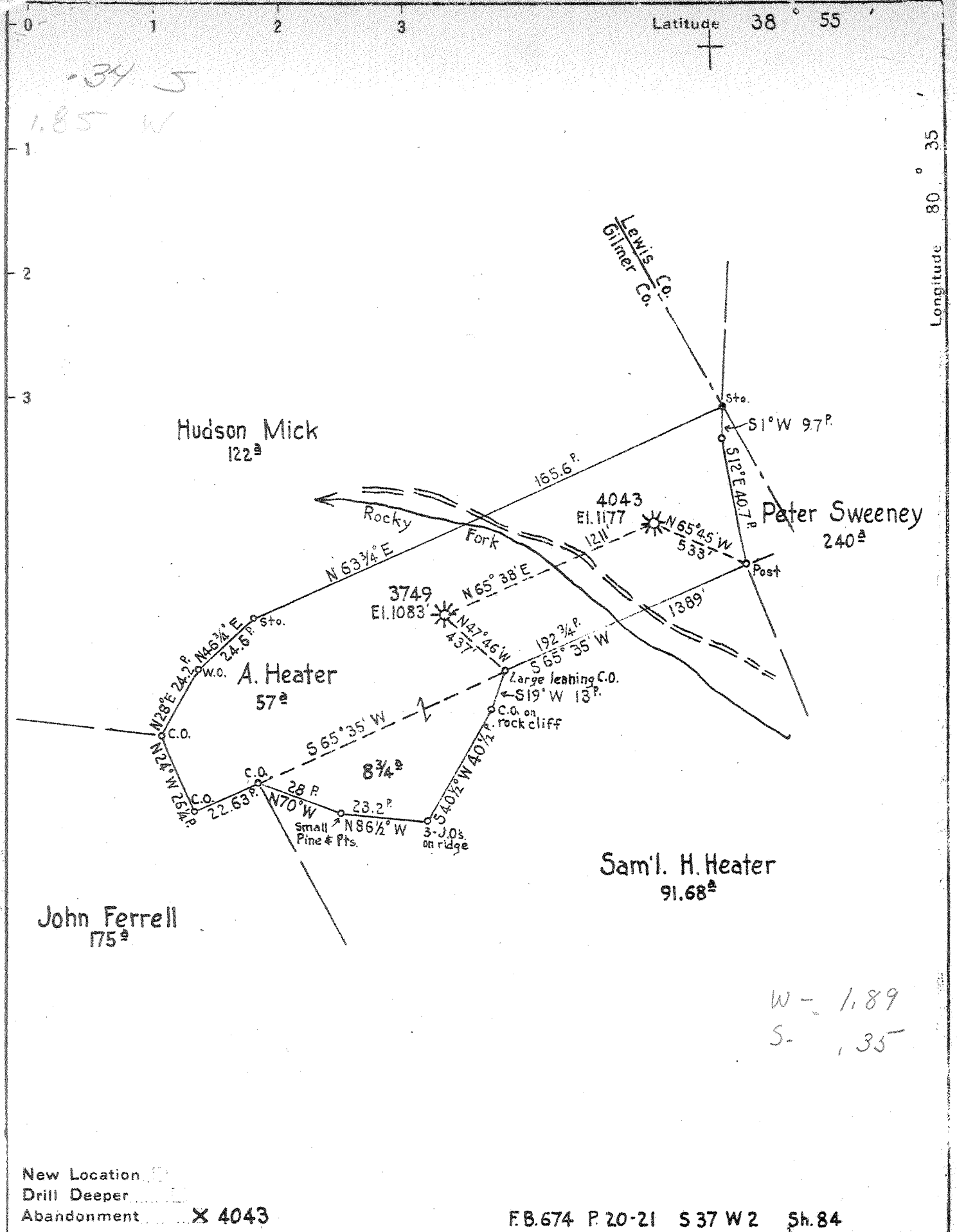


M

34 J  
1.85 W



New Location   
 Drill Deeper   
 Abandonment  X 4043

FB.674 P.20-21 S37 W2 Sh.84

Company	HOPE NATURAL GAS CO.
Address	CLARKSBURG, W. VA.
Farm	A. Heater
Tract	Acres 66
Lease No.	26068
Well (Farm) No.	J-2
Serial No.	3749 4043
Elevation (Spirit Level)	See Plat
Quadrangle	BURNSVILLE
County	GILMER District GLENNVILLE
Engineer	Wm Bowers
Engineer's Registration No.	900
File No.	Drawing No.
Date	7/17/39
Scale	1"=40'

STATE OF WEST VIRGINIA  
 DEPARTMENT OF MINES  
 OIL AND GAS DIVISION  
 CHARLESTON

WELL LOCATION MAP  
 FILE NO. GIL-138A

+ Denotes location of well on United States Topographic Maps, scale 1 to 62,500, latitude and longitude lines being represented by border lines as shown.

- Denotes one inch spaces on border line of original tracing.

Glenville District, Gilmer County, W. Va.  
 By Hope Natural Gas Co., Clarksburg, W. Va.  
 Abandoned under permit Gil-128-A.  
 On 66 acres, on Rocky Fork.  
 Elevation, 1177' L.  
 Surface owned by A. Heater, Orlando, W. Va.  
 Drilling commenced Feb. 23, 1916; completed, April 8, 1916.  
 Shot April 12, 1916, at 2660-2674'.  
 No fresh water recorded. Salt water at 1310 and 1865'.  
 10" casing, 123' (pulled); 8 $\frac{1}{4}$ "<sup>2</sup>, 858' (pulled); 6 $\frac{5}{8}$ "<sup>2</sup>, 2068';  
 2" tubing, 2716' (pulled).  
 Casing not cemented. No coal was encountered.  
 Gas well. Abandonment reported to Dept. of Mines Nov. 28, 1939.  
 Record to RCF from Mrs. Griffith December 1, 1939.

	Top.	Bottom.
Little Dunkard Sand	680	- 700
Big Dunkard Sand	790	- 860
Gas Sand	980	- 1200
First Salt Sand (water, 1310')	1250	- 1410
Second Salt Sand (water, 1865')	1825	- 1875
Maxton Sand	1925	- 1940
Little Lime	1970	- 1995
Big Lime	2010	- 2065
Big Injun Sand (gas, 2225', very small)	2065	- 2275
Berea Sand	2340	- 2365
Gantz Sand	2415	- 2435
Fifty-foot Sand	2480	- 2492
Thirty-foot Sand	2550	- 2560
Gordon Stray Sand (gas, 2629')	2621	- 2636
Gordon Sand (gas, 2663-2674')	2655	- 2676
Total depth		2716

STATE OF WEST VIRGINIA  
DEPARTMENT OF MINES  
OIL AND GAS DIVISION

246

WELL RECORD

GIC-138-A

Permit No. ....

Oil or Gas Well Gas  
(Kind)

Company Hope Natural Gas Company  
Address Clarksburg, W. Va.  
Farm A. Heater Acres 66  
Location (waters) Rocky Fork  
Well No. 4043 Elev. 1177  
District Glenville County Gilmer  
The surface of tract is owned in fee by A. Heater  
Address Orlando, W. Va.  
Mineral rights are owned by \_\_\_\_\_  
Address \_\_\_\_\_  
Drilling commenced 2-23-1916  
Drilling completed 4-6-1916  
Date shot 4-12-1916 Depth of shot 2660-2674  
Open Flow /10ths Water in \_\_\_\_\_ Inch  
/10ths Merc. in \_\_\_\_\_ Inch  
Volume \_\_\_\_\_ Cu. Ft.  
Rock Pressure \_\_\_\_\_ lbs. \_\_\_\_\_ hrs.  
Oil \_\_\_\_\_ bbls., 1st 24 hrs.  
Fresh water None recorded feet \_\_\_\_\_ feet  
Salt water 1310-1865 feet \_\_\_\_\_ feet

Casing and Tubing	Used in Drilling	Left in Well	Packers
Size			
16.			Kind of Packer
13.			
10.	<u>123</u>	<u>Pulled</u>	Size of
8 1/4.	<u>252</u>	<u>Pulled</u>	
6 5/8.	<u>2068</u>	<u>2068</u>	Depth set
5 3/16.			
3.			Perf. top
2.	<u>2716</u>	<u>Pulled</u>	Perf. bottom
Liners Used			Perf. top
			Perf. bottom

CASING CEMENTED \_\_\_\_\_ SIZE \_\_\_\_\_ No. FT. \_\_\_\_\_ Date \_\_\_\_\_  
COAL WAS ENCOUNTERED AT \_\_\_\_\_ FEET \_\_\_\_\_ INCHES  
Not cemented  
\_\_\_\_\_ FEET No coal INCHES \_\_\_\_\_ FEET \_\_\_\_\_ INCHES  
\_\_\_\_\_ FEET \_\_\_\_\_ INCHES \_\_\_\_\_ FEET \_\_\_\_\_ INCHES

Formation	Color	Hard or Soft	Top	Bottom	Oil Gas or Water	Depth Found	Remarks
Little Dunkard Sand			680	700			
Big Dunkard Sand			790	860			
Gas Sand			980	1200			
First Salt Sand			1250	1410	Water	1310	
Second Salt Sand			1825	1875	Water	1865	
Maxon Sand			1925	1940			
Little lime			1970	1995			
Big Lime			2010	2065			
Big Injun Sand			2065	2275	Gas	2225	Very Small
Berea Sand			2340	2365			
Gentz Sand			2415	2435			
Fifty Foot Sand			2480	2492			
Thirty Foot Sand			2550	2560			
Gordon Stray Sand			2621	2636	Gas	2629	
Gordon Sand			2655	2676	Gas	2663-2674	
Total Depth				2716			

