

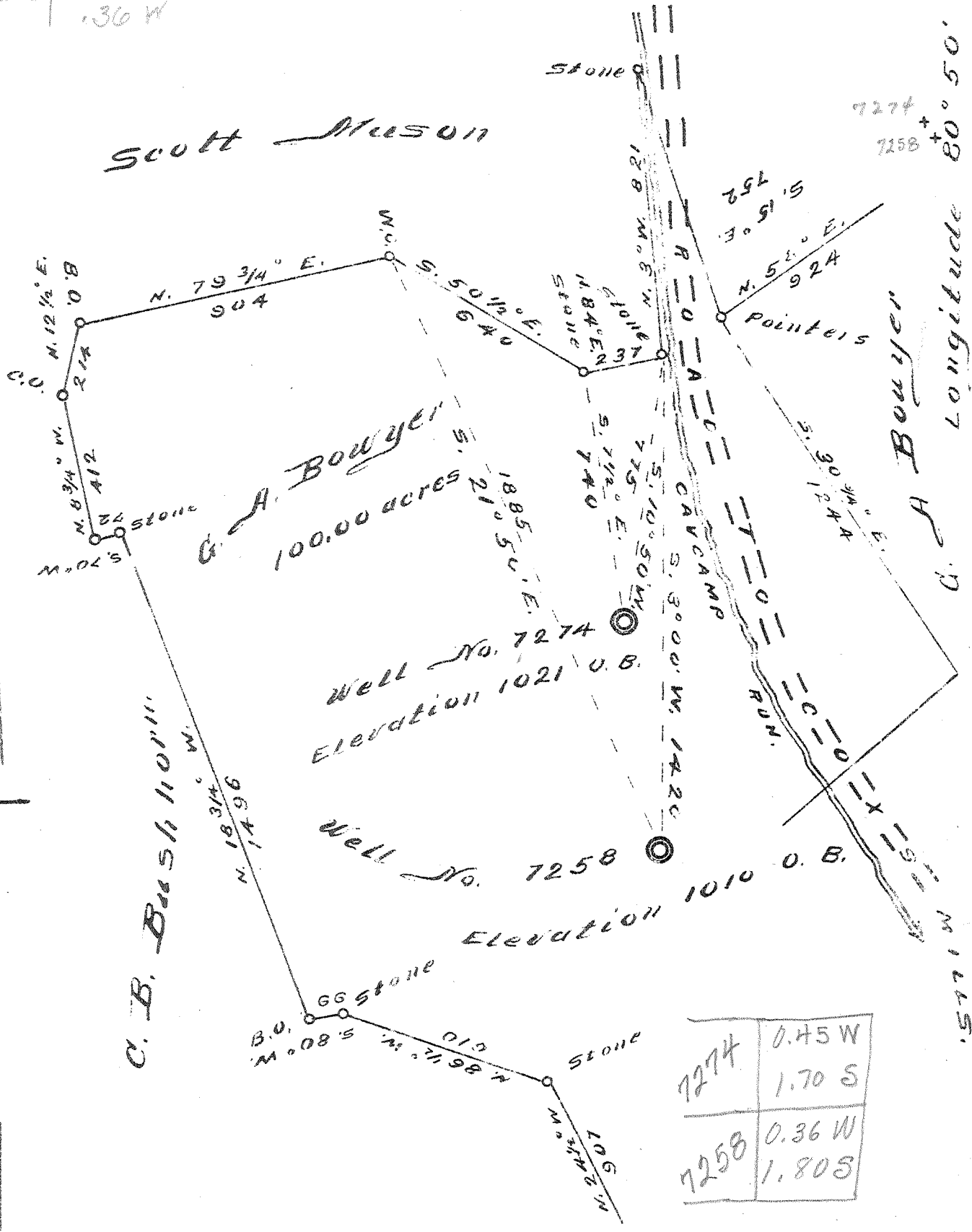
Latitude 39° 05'

#7274	1.78 S
	.43 W
#7258	1.67 S
	.36 W

Scott Mason

7274 +  
7258 +

Longitude 80° 50'



COMPANY H. E. Milliken & A. M. Snider  
 ADDRESS Waynesburg Penn.  
 FARM G. A. Bowyer  
 TRACT One 100.00 acres  
 WELLS Abandonment  
No. 7258 & No. 7274  
 QUADRANGLE Holbrook, S.C.  
 DISTRICT T702  
 COUNTY Gilmer  
 ENGINEER David Weed  
 REGIS. NO. 233-16-5707  
 DATE August 31-1939  
 SCALE 1 inch = 400 feet.

State of West Virginia  
 Department of Mines  
 Oil & Gas Division

Charleston

Well Location Map

File No. GIL-142A-7258  
143A-7274

Troy District, Gilmer County, W. Va.

By Milliken & Snider, A. M. Snider, Garrison, Pa.

Abandoned under permit Gil-143-A.

On 100 acres, on Cavecamp (Coxcamp?) Run.

Elevation, 1021' L.

Surface and minerals owned by G. A. Bowyer, Coxs Mills, W. Va.

Drilling completed Aug. 11, 1913.

No record of shot.

No fresh water recorded.

Salt water at 1075'.

10", no record, pulled; 8 $\frac{1}{4}$ ", 980'; 6 $\frac{5}{8}$ ", 1877'; 2" tubing, 2318'.

Casing not cemented.

No coal was encountered.

Oil well. Abandonment reported to Dept. of Mines Oct. 9, 1939.

Record to RCT from Mrs. Griffith July 15, 1940.

	0	Top.	Bottom.
Sand		25 -	35
Sand		50 -	120
Red rock		120 -	245
Lime		265 -	290
Sand		290 -	320
Red rock		395 -	495
Slate		495 -	540
Red rock		540 -	665
Lime		665 -	700
Lime		725 -	765
Little Dunkard Sand		765 -	780
Big Dunkard Sand		895 -	920
Gas Sand		1050 -	1080
First Salt Sand		1100 -	1180
Second Salt Sand		1190 -	1215
Third Salt Sand		1475 -	1530
Sand		1625 -	1680
Maxton Sand		1705 -	1713
Little Lime		1776 -	1801
Sand		1801 -	1816
Big Lime		1826 -	1868
Big Injun Sand (gas, 1885')		1868 -	1972
Slate and shells		1972 -	2070
Berea Sand		2070 -	2125
Slate and shells		2125 -	2275
Gantz Sand (oil and gas, 2285-2295')		2275 -	2298
Total depth			2298

STATE OF WEST VIRGINIA  
DEPARTMENT OF MINES  
OIL AND GAS DIVISION

265

WELL RECORD

Permit No. 143A

Oil or Gas Well Oil  
(Kind)

Company Milliken & Snider  
Address % A. M. Snider, Garrison, Pa.  
Farm G. A. Bowyer Acres 100  
Location (waters) Cavecamp Run  
Well No. 7274 Elev. 1021  
District Troy County Gilmer  
The surface of tract is owned in fee by G. A. Bowyer  
Address Cox's Mills, W. Va.  
Mineral rights are owned by do.  
Address \_\_\_\_\_  
Drilling commenced -  
Drilling completed 8-11-1913  
Date shot No record Depth of shot \_\_\_\_\_  
Open Flow /10ths Water in \_\_\_\_\_ Inch  
/10ths Merc. in \_\_\_\_\_ Inch  
Volume \_\_\_\_\_ Cu. Ft.  
Rock Pressure \_\_\_\_\_ lbs. \_\_\_\_\_ hrs.  
Oil \_\_\_\_\_ bbls., 1st 24 hrs.  
Fresh water None recorded feet \_\_\_\_\_ feet  
Salt water 1075 feet \_\_\_\_\_ feet

Casing and Tubing	Used in Drilling	Left in Well	Packers
Size			
16.			Kind of Packer
13.			
10.	No record	Pulled	Size of
8 3/4.	980	980	
6 5/8.	1877	1877	Depth set
5 3/16.			
3.			Perf. top
2.	2318	2318	Perf. bottom
Liners Used			Perf. top
			Perf. bottom

CASING CEMENTED \_\_\_\_\_ SIZE \_\_\_\_\_ No. FT. \_\_\_\_\_ Date \_\_\_\_\_  
Not cemented  
COAL WAS ENCOUNTERED AT \_\_\_\_\_ FEET \_\_\_\_\_ INCHES  
No coal  
\_\_\_\_\_ FEET \_\_\_\_\_ INCHES \_\_\_\_\_ FEET \_\_\_\_\_ INCHES  
\_\_\_\_\_ FEET \_\_\_\_\_ INCHES \_\_\_\_\_ FEET \_\_\_\_\_ INCHES

Formation	Color	Hard or Soft	Top	Bottom	Oil Gas or Water	Depth Found	Remarks
Sand			25	35			
Sand			50	120			
Red Rock			120	245			
Lime			265	290			
Sand			290	320			
Red Rock			395	495			
Slate			495	540			
Red Rock			540	665			
Lime			665	700			
Lime			725	765			
Little Dunkard Sand			765	780			
Big Dunkard Sand			895	920			
Gas Sand			1050	1080			
First Salt Sand			1100	1180			
Second Salt Sand			1190	1215			
Third Salt Sand			1475	1530			
Sand			1625	1680			
Maxon Sand			1705	1713			
Little Lime			1776	1801			
Sand			1801	1816			
Big Lime			1826	1868			

(Over)

700 15 1914

Formation	Color	Hard or Soft	Top	Bottom	Oil, Gas or Water	Depth Found	Remarks
Big Injun Sand			1868	1972	Gas	1885	
Slate & Shells			1972	2070			
Berea Sand			2070	2125			
Slate & Shells			2125	2275			
Gantz Sand			2275	2298	Oil & Gas	2285-2295	
Total Depth			-----				
				2298			

Date October 9, 19 39

APPROVED Milliken & Snider, Owner

By H. E. Milliken Partner  
(Title)