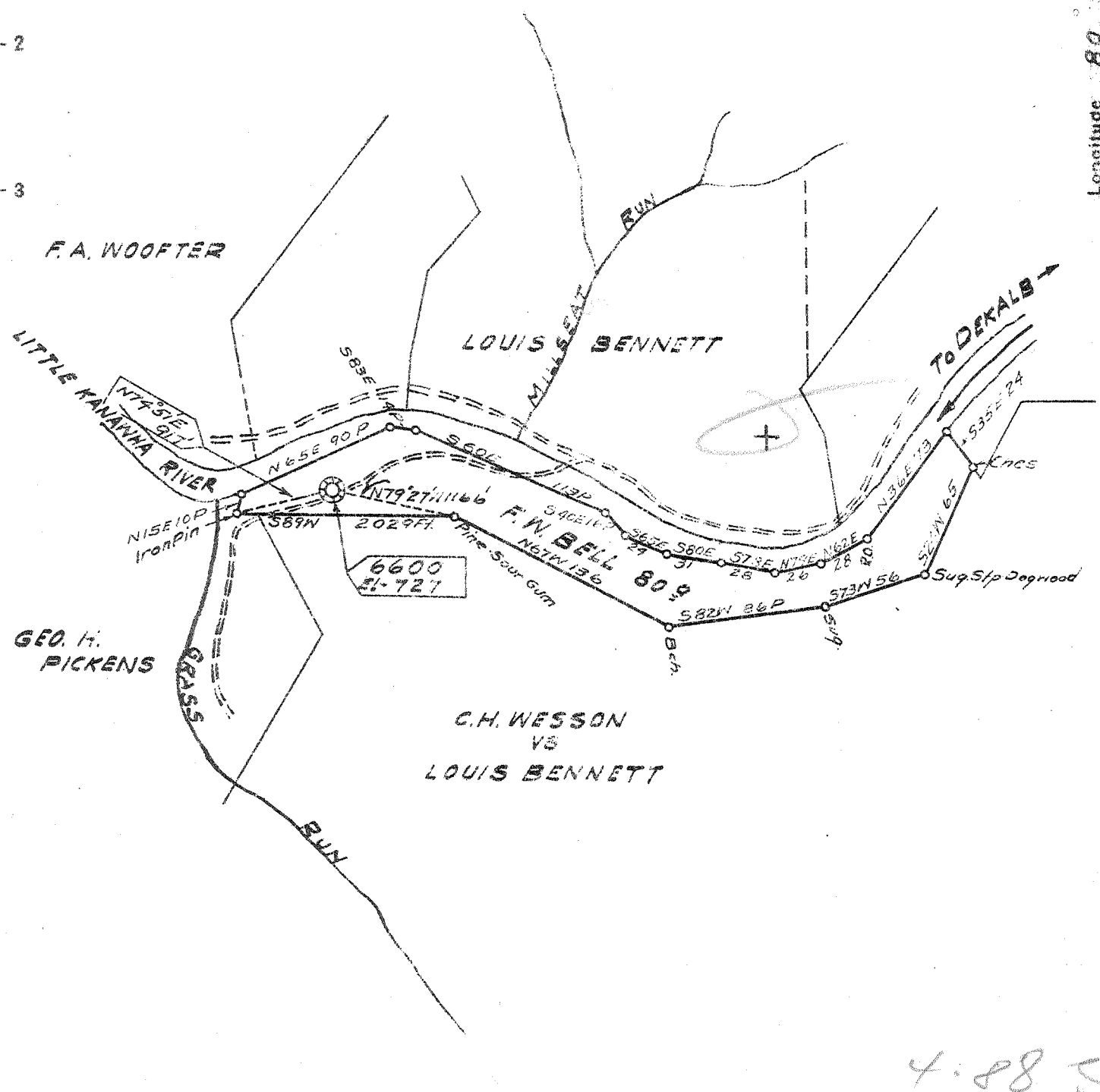


M

Latitude 39 00'

Longitude 80 55'

4.82 S
2.31 W



- New Location...
- Drill Deeper...
- Abandonment...

S35W20 SH-89 FB. 729 P-3

4.88 S
2.31 W

Company HOPE NATURAL GAS CO.
 Address CLARKSBURG, W. VA.
 Farm F.W. BELL
 Tract 1 Acres 80 Lease No. 38264
 Well (Farm) No. 1 Serial No. 6600
 Elevation (Spirit Level) 727
 Quadrangle GLENVILLE
 County GILMER District DEKALB
 Engineer W.M. Bowers
 Engineer's Registration No. 900
 File No. _____ Drawing No. _____
 Date NOV-18-1942 Scale 1" = 80 P

STATE OF WEST VIRGINIA
 DEPARTMENT OF MINES
 OIL AND GAS DIVISION
 CHARLESTON

WELL LOCATION MAP
 FILE NO. GIL-186-A

+ Denotes location of well on United States Topographic Maps, scale 1 to 62,500, latitude and longitude lines being represented by border lines as shown.

- Denotes one inch spaces on border line of original tracing.

Dekalb District, Gilmer County, W. Va.
 By Hope Natural Gas Co., 445 W. Main St., Clarksburg, W. Va.
 Abandoned under permit Gil-186-A.

On 80 acres.

Elevation, 727' L.

Drilling commenced Jan. 9, 1925; completed, Feb. 23, 1925.

No fresh water recorded.

Salt water at 1572-1574'.

8 $\frac{1}{4}$ " casing, 200' (pulled); 6 $\frac{5}{8}$ " , 774' (pulled); 5 $\frac{3}{8}$ " , 1513'; 2" tubing,
 1605' (pulled).

Casing not cemented.

No coal was encountered.

Gas well. Abandonment reported to Dept. of Mines Nov. 18, 1942.

Record to RCT from Mrs. Griffith Dec. 19, 1942.

	Top.	Bottom.
Little Dunkard Sand	520	- 540
Big Dunkard Sand	610	- 690
Gas Sand	770	- 875
First Salt Sand	1000	- 1025
Second Salt Sand	1100	- 1140
Stray sand (gas, 1320-1325')	1310	- 1340
Maxton Sand	1370	- 1452
Little Lime	1470	- 1490
Blue Monday Sand	1490	- 1498
Pencil Cave	1498	- 1510
Big Lime	1510	- 1555
Big Injun Sand (water, 1572-1574') (gas, 1564-1570')	1555	- 1660
Total depth		1866
Filled back to		1605

STATE OF WEST VIRGINIA
DEPARTMENT OF MINES
OIL AND GAS DIVISION

329

WELL RECORD

Permit No. 1566-A

Oil or Gas Well Gas
(KIND)

Company Hope Natural Gas Company.
 Address 445 West Main St. Clarksburg, W. Va.
 Farm F. W. Beall Acres 80
 Location (waters)
 Well No. 6600 Elev. 727
 District Deftalb County Gilmer
 The surface of tract is owned in fee by
 Address
 Mineral rights are owned by
 Address
 Drilling commenced Jan. 9, 1925
 Drilling completed Feb. 23, 1925
 Date Shot From To
 With
 Open Flow /10ths Water in Inch
 /10ths Merc. in Inch
 Volume Cu. Ft.
 Rock Pressure lbs. hrs.
 Oil bbls., 1st 24 hrs.
 Fresh water none recorded feet feet
 Salt water 1572-1574 feet feet

Casing and Tubing	Used in Drilling	Left in Well	Packers
Size			Kind of Packer
16.			
13.			
10.			Size of
8 1/4	200	Pulled	
6%	774	Pulled	Depth set
5 3/16	1513	1513	
3.			Perf. top
2.	1605	Pulled	Perf. bottom
Liners Used			Perf. top
			Perf. bottom

Not cemented
 CASING CEMENTED SIZE No. Ft. Date
 None recorded
 COAL WAS ENCOUNTERED AT FEET INCHES
 FEET INCHES FEET INCHES
 FEET INCHES FEET INCHES

Formation	Color	Hard or Soft	Top	Bottom	Oil, Gas or Water	Depth Found	Remarks
Little Dunkard sand			520	540			
Big Dunkard sand			610	690			
Gas Sand			770	875			
First Salt Sand			1000	1025			
Second Salt sand			1100	1140			
Stray sand			1310	1340	Gas	1320-1325	
Maxon sand			1370	1452			
Little Lime			1470	1490			
Blue Munday			1490	1498			
Pencil Cave			1498	1510			
Big Lime			1510	1555			
Big Injun Sand			1555	1660	Water Gas	1572-1574 1564-1570	
		Total depth		1866			
		Filled back to		1605			

