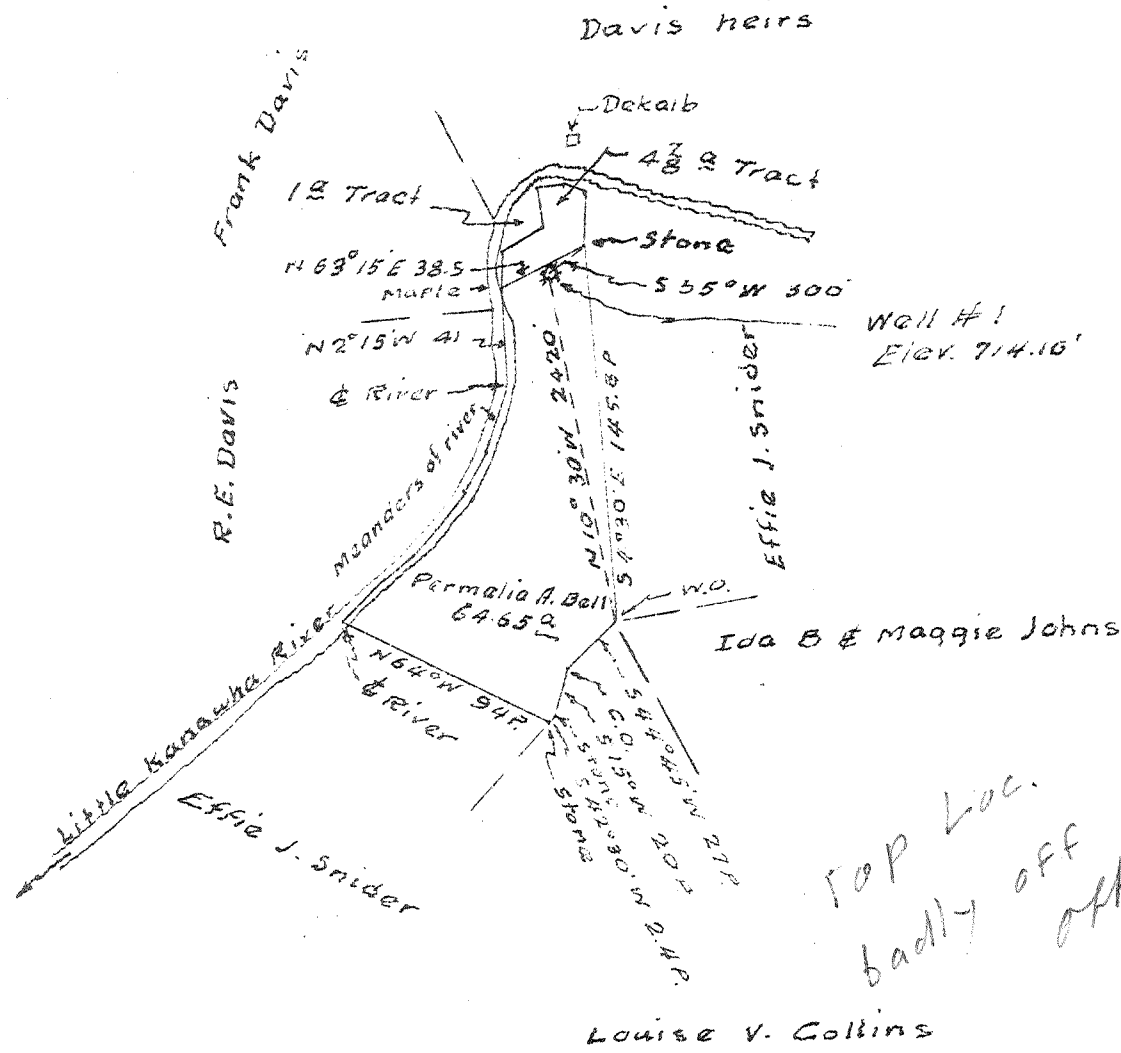


2.63 S  
31 W

1  
2  
3



New Location   
 Drill Deeper   
 Abandonment

Company Godfrey L. Cabot, Inc.  
 Address 900 Union Bldg, Charleston, W.Va.  
 Farm Permalia A. Bell  
 Tract One Acres 64.65 Lease No. \_\_\_\_\_  
 Well (Farm) No. One Serial No. 479  
 Elevation (Spirit Level) 714.10  
 Quadrangle Glenville  
 County Gilmer District Dekalb  
 Engineer Logan McDonald  
 Engineer's Registration No. 610  
 File No. \_\_\_\_\_ Drawing No. \_\_\_\_\_  
 Date 4-15-43 Scale 1" = 1320'

STATE OF WEST VIRGINIA  
 DEPARTMENT OF MINES  
 OIL AND GAS DIVISION  
 CHARLESTON

WELL LOCATION MAP  
 FILE NO. Gil-196-A

+ Denotes location of well on United States Topographic Maps, scale 1 to 62,500, latitude and longitude lines being represented by border lines as shown.  
 - Denotes one inch spaces on border line of original tracing.